

เอกสารแนบที่ 7

แผนการบำรุงรักษาเชิงป้องกันเครื่องจักรและอุปกรณ์ประจำปี

Form No.
Effective Date 09.11.2022
Revision 3

Legend Text : B = Program Backlog, C = Calibrate, F = Function Test, H = Overhaul, I = Inspect, L = Lubricate, M = Strategy Plan, P = Preventive, Q = Check oil quality S = Service, T = Stand by condition, check, U = Running condition, check, V = Verify																				
Item	S. No.	Equipment No.	Maintenance Item Description	Cycle	Unit	Act. Type	BA	BB	BC	BD	BE	BF	BG	BH	BI	BJ	BK	BL	BM	BN
60	DO	-DO-PIPING	W6-0005036	Piping Inspection (Class4)	10Y	INT														
70	DO	-DO-PIPING	W6-0005038	Piping Inspection (Class4)	10Y	INT														
71	DO	-DO-PIPING	W6-0005040	Piping Inspection (Class4)	10Y	INT														
72	DO	-DO-PIPING	W6-0005042	Piping Inspection (Class4)	10Y	INT														
73	DO	-DO-PIPING	W6-0005044	Piping Inspection (Class4)	10Y	INT														
74	DO	-DO-PIPING	W6-0005046	Piping Inspection (Class4)	10Y	INT														
75	DO	-DO-PIPING	W6-0005050	Piping Inspection (Class4)	10Y	INT														
76	DO	-DO-PIPING	W6-0009002	Piping Inspection (Class4)	10Y	INT														
77	DO	-DO-PIPING	W6-0009004	Piping Inspection (Class4)	10Y	INT														
78	DO	-DO-PIPING	W6-0009008	Piping Inspection (Class4)	10Y	INT														
79	DO	-DO-PIPING	W6-0009018	Piping Inspection (Class4)	10Y	INT														
80	DO	-DO-PIPING	W6-0009022	Piping Inspection (Class4)	10Y	INT														
81	DO	-DO-PIPING	W6-0009024	Piping Inspection (Class4)	10Y	INT														
82	DO	-DO-PIPING	W6-0009028	Piping Inspection (Class4)	10Y	INT														
83	DO	-DO-PIPING	W6-0009030	Piping Inspection (Class4)	10Y	INT														
84	DO	-DO-PIPING	W6-0009032	Piping Inspection (Class4)	10Y	INT														
85	DO	-DO-PIPING	W6-0009034	Piping Inspection (Class4)	10Y	INT														
86	DO	-DO-PIPING	W6-0009096	Piping Inspection (Class4)	10Y	INT														
87	DO	-DO-PIPING	W6-0009098	Piping Inspection (Class4)	10Y	INT														
88	DO	-DI-PIPING	W6-3117009	Piping Inspection (Class4)	10Y	INT														
90	DO	-DI-PIPING	W6-3117010	Piping Inspection (Class4)	10Y	INT														
90	DO	-DI-PIPING	W6-3125007	Piping Inspection (Class4)	10Y	INT														
91	DO	-DI-PIPING	W6-3120006	Piping Inspection (Class4)	10Y	INT														
92	DO	-DI-PIPING	W6-3144012	Piping Inspection (Class4)	10Y	INT														
93	DO	-DI-PIPING	W6-3144018	Piping Inspection (Class4)	10Y	INT														
94	DO	-DI-PIPING	W6-3144028	Piping Inspection (Class4)	10Y	INT														
95	DO	-DI-PIPING	W6-3144027	Piping Inspection (Class4)	10Y	INT														
96	DO	-DI-PIPING	W6-3145013	Piping Inspection (Class4)	10Y	INT														
97	DO	-DI-PIPING	W6-3145028	Piping Inspection (Class4)	10Y	INT														
98	DO	-DI-PIPING	W6-3152012	Piping Inspection (Class4)	10Y	INT														
99	DO	-DI-PIPING	W6-3154006	Piping Inspection (Class4)	10Y	INT														
100	DO	-DI-PIPING	W6-3158013	Piping Inspection (Class4)	10Y	INT														
101	DO	-DI-PIPING	W6-3158014	Piping Inspection (Class4)	10Y	INT														
102	DO	-DI-PIPING	W6-3159011	Piping Inspection (Class4)	10Y	INT														

Form No.
Effective Date 09.11.2022
Revision 3

[illegible]

Form No.
Effective Date 09.11.2022
Revision 3

Legend Test : B = Program Back-up C = Calibrate F = Function Test H = Overhaul I = Inspect L = Lubricate M = Strategy Plan P = Preventive Q = Check oil quality S = Service T = Stand by condition check U = Running condition check V = Verify																					
Item	S. No.	Equipment No.	Maintenance Item Description	QC'd	Unit	Act. Type	Jan	Feb	Mar	Apr	May	Jun	Jul	Aug	Sep	Oct	Nov	Dec	Remarks	Remarks	
103	001	~PIPING	~IW-3161011	Piping Inspection (Class4)	10Y	INT					I								IPI-INT	243666	275293
104	001	~PIPING	~IW-3164013	Piping Inspection (Class4)	10Y	INT					I								IPI-INT	243668	275295
105	001	~PIPING	~IW-3165009	Piping Inspection (Class4)	10Y	INT					I								IPI-INT	243670	275297
106	001	~PIPING	~IW-3165024	Piping Inspection (Class4)	10Y	INT					I								IPI-INT	243672	275299
107	001	~PIPING	~IW-3167010	Piping Inspection (Class4)	10Y	INT					I								IPI-INT	243674	275301
108	001	~PIPING	~IW-3168012	Piping Inspection (Class4)	10Y	INT					I								IPI-INT	243676	275303
109	001	~PIPING	~IW-3169028	Piping Inspection (Class4)	10Y	INT					I								IPI-INT	243678	275305
110	001	~PIPING	~IW-3170009	Piping Inspection (Class4)	10Y	INT					I								IPI-INT	243680	275306
111	001	~PIPING	~IW-3171008	Piping Inspection (Class4)	10Y	INT					I								IPI-INT	243683	275309
112	001	~PIPING	~IW-3172011	Piping Inspection (Class4)	10Y	INT					I								IPI-INT	243685	275302
113	001	~PIPING	~IW-3174021	Piping Inspection (Class4)	10Y	INT					I								IPI-INT	243686	275303
114	001	~PIPING	~IW-3176009	Piping Inspection (Class4)	10Y	INT					I								IPI-INT	243688	275305
115	001	~PIPING	~IW-3178010	Piping Inspection (Class4)	10Y	INT					I								IPI-INT	243689	275306
116	001	~PIPING	~IW-3179009	Piping Inspection (Class4)	10Y	INT					I								IPI-INT	243691	275308
117	001	~PIPING	~IW-3179010	Piping Inspection (Class4)	10Y	INT					I								IPI-INT	243692	275309
118	001	~PIPING	~IW-3300105	Piping Inspection (Class4)	10Y	INT					I								IPI-INT	244228	276855
119	001	~PIPING	~IW-3310008	Piping Inspection (Class4)	10Y	INT					I								IPI-INT	244231	276848
120	001	~PIPING	~IW-3321006	Piping Inspection (Class4)	10Y	INT					I								IPI-INT	244233	276850
121	001	~PIPING	~IW-3331016	Piping Inspection (Class4)	10Y	INT					I								IPI-INT	244236	276853
122	001	~PIPING	~IW-3331017	Piping Inspection (Class4)	10Y	INT					I								IPI-INT	244237	276854
123	001	~PIPING	~IW-3400101	Piping Inspection (Class4)	10Y	INT					I								IPI-INT	244415	276702
124	001	~PIPING	~IW-3404022	Piping Inspection (Class4)	10Y	INT					I								IPI-INT	244418	276025
125	001	~PIPING	~IW-3400019	Piping Inspection (Class4)	10Y	INT					I								IPI-INT	244420	276037
126	001	~PIPING	~IW-3412013	Piping Inspection (Class4)	10Y	INT					I								IPI-INT	244422	276040
127	001	~PIPING	~IW-3420114	Piping Inspection (Class4)	10Y	INT					I								IPI-INT	244423	276041
128	001	~PIPING	~IW-0050001	Piping Inspection (Class4)	10Y	INT					I								IPI-INT	242638	274239
129	001	~PIPING	~IW-0050003	Piping Inspection (Class4)	10Y	INT					I								IPI-INT	242640	274237
130	001	~PIPING	~IW-0050005	Piping Inspection (Class4)	10Y	INT					I								IPI-INT	242641	274238
131	001	~PIPING	~IW-0050007	Piping Inspection (Class4)	10Y	INT					I								IPI-INT	242642	274239
132	001	~PIPING	~IW-0050009	Piping Inspection (Class4)	10Y	INT					I								IPI-INT	242643	274260
133	001	~PIPING	~IW-0050015	Piping Inspection (Class4)	10Y	INT					I								IPI-INT	242644	274261
134	001	~PIPING	~IW-0050017	Piping Inspection (Class4)	10Y	INT					I								IPI-INT	242645	274262
135	001	~PIPING	~IW-0050023	Piping Inspection (Class4)	10Y	INT					I								IPI-INT	242640	274263
136	001	~PIPING	~IW-0050025	Piping Inspection (Class4)	10Y	INT					I								IPI-INT	242647	274264

Form No.
Effective Date 09.11.2022
Revision 3

Legend: Test = B = Program Back-up C = Calibrate F = Function Test H = Overhaul I = Inspect L = Lubricate M = Strategy Plan P = Preventive Q = Check oil quality S = Service T = Stand by condition check U = Running condition check V = Verify																				
Item	Sr. No.	Equipment No.	Maintenance Item Description	Cycle	Units	Act. Type	SR	TS	BR	GR	RR	LR	UR	AS	UC	SC	NV	Back Res Center	Min. Price	Maintenance
35	002-31-FPIPG	1-17246-31114909	Piping Inspection (Class4)	10Y	INT					I								IRI-INVE	243033	215250
36	002-30-FPIPG	1-17246-0080205	Piping Inspection (Class4)	10Y	INT					I								IRI-INVE	242660	214277
37	002-30-FPIPG	1-17246-0080609	Piping Inspection (Class4)	10Y	INT					I								IRI-INVE	242663	214280
38	002-30-FPIPG	1-17246-0080919	Piping Inspection (Class4)	10Y	INT					I								IRI-INVE	242665	214282
39	002-30-FPIPG	1-17246-0080337	Piping Inspection (Class4)	10Y	INT					I								IRI-INVE	242673	214290
40	002-30-FPIPG	1-17246-0080908	Piping Inspection (Class4)	10Y	INT					I								IRI-INVE	242674	214291
41	002-30-FPIPG	1-17246-0080607	Piping Inspection (Class4)	10Y	INT					I								IRI-INVE	242675	214293
42	002-31-FPIPG	1-17246-31114908	Piping Inspection (Class4)	10Y	INT					I								IRI-INVE	243067	215314
43	002-30-FPIPG	1-AW0544918	Piping Inspection (Class2)	5Y	INT					I								IRI-INVE	242420	214037
44	002-30-FPIPG	1-TG0505103	Piping Inspection (Class2)	5Y	INT					I								IRI-INVE	242425	214042
45	002-30-FPIPG	1-TG0505104	Piping Inspection (Class2)	5Y	INT					I								IRI-INVE	242426	214043
46	002-31-FPIPG	1-SBM-3106008	Piping Inspection (Class4)	10Y	INT					I								IRI-INVE	243516	215333
47	002-30-FPIPG	1-WP-0023105	Piping Inspection (Class4)	10Y	INT					I								IRI-INVE	242580	214197
48	002-30-FPIPG	1-WP-0023106	Piping Inspection (Class4)	10Y	INT					I								IRI-INVE	242581	214198
49	002-30-FPIPG	1-WP-0023108	Piping Inspection (Class4)	10Y	INT					I								IRI-INVE	242582	214199
50	002-30-FPIPG	1-WP-0023101	Piping Inspection (Class4)	10Y	INT					I								IRI-INVE	242583	214201
51	002-30-FPIPG	1-WP-0023101	Piping Inspection (Class4)	10Y	INT					I								IRI-INVE	242585	214202
52	002-30-FPIPG	1-WP-0023102	Piping Inspection (Class4)	10Y	INT					I								IRI-INVE	242586	214203
53	002-30-FPIPG	1-WP-0025103	Piping Inspection (Class4)	10Y	INT					I								IRI-INVE	242587	214204
54	002-31-FPIPG	1-WP-3110201	Piping Inspection (Class4)	10Y	INT					I								IRI-INVE	243625	215242
55	002-31-FPIPG	1-WP-3119101	Piping Inspection (Class4)	10Y	INT					I								IRI-INVE	243627	215244
56	002-30-FPIPG	1-WM-0005002	Piping Inspection (Class4)	10Y	INT					I								IRI-INVE	242588	214206
57	002-30-FPIPG	1-WM-0005004	Piping Inspection (Class4)	10Y	INT					I								IRI-INVE	242589	214206
58	002-30-FPIPG	1-WM-0005006	Piping Inspection (Class4)	10Y	INT					I								IRI-INVE	242590	214207
59	002-30-FPIPG	1-WM-0005009	Piping Inspection (Class4)	10Y	INT					I								IRI-INVE	242591	214208
60	002-30-FPIPG	1-WM-0005010	Piping Inspection (Class4)	10Y	INT					I								IRI-INVE	242592	214209
61	002-30-FPIPG	1-WM-0005016	Piping Inspection (Class4)	10Y	INT					I								IRI-INVE	242593	214210
62	002-30-FPIPG	1-WM-0005018	Piping Inspection (Class4)	10Y	INT					I								IRI-INVE	242594	214211
63	002-30-FPIPG	1-WM-0005024	Piping Inspection (Class4)	10Y	INT					I								IRI-INVE	242595	214212
64	002-30-FPIPG	1-WM-0005026	Piping Inspection (Class4)	10Y	INT					I								IRI-INVE	242596	214213
65	002-30-FPIPG	1-WM-0005029	Piping Inspection (Class4)	10Y	INT					I								IRI-INVE	242597	214214
66	002-30-FPIPG	1-WM-0005039	Piping Inspection (Class4)	10Y	INT					I								IRI-INVE	242598	214215
67	002-30-FPIPG	1-WM-0005032	Piping Inspection (Class4)	10Y	INT					I								IRI-INVE	242599	214216
68	002-30-FPIPG	1-WM-0005034	Piping Inspection (Class4)	10Y	INT					I								IRI-INVE	242600	214217

Form No.
Effective Date 09.11.2022
Revision 3

Legend Text : B = Program Back-up C = Calibrate F = Function Test H = Overhaul I = Inspect L = Lubricate M = Strategy Plan P = Preventive Q = Check oil quality
S = Service T = Stand by condition check U = Running condition check V = Verify

Item	S. No.	Equipment No.	Maintenance Item Description	S/S	Moist.	Aid.	Type	IN	IR	OS	OP	UV	JA	JL	AL	SP	CC	CE	CR	GRS Cost	Gen. Pln	Maintenance
205	-0C -> -0B -> PIPING	3-4W6-0023010	Piping Inspection (Class4)	10Y	INT							I								IRI-INR	\$24991	\$74308
206	-0C -> -0B -> PIPING	3-4W6-00210010	Piping Inspection (Class4)	10Y	INT							I								IRI-INR	\$24991	\$74308
207	-0C -> -0B -> PIPING	3-4A-3144504	Piping Inspection (Class2)	5Y	INT															IRI-INR	\$23565	\$74965
208	-0C -> -0B -> PIPING	3-4A-30810542	Piping Inspection (Class2)	5Y	INT															IRI-INR	\$24032	\$75669
209	-0C -> -0B -> PIPING	3-4A-3102005	Piping Inspection (Class2)	5Y	INT															IRI-INR	\$24033	\$75657
210	-0C -> -0B -> PIPING	3-4A-3300010	Piping Inspection (Class2)	5Y	INT															IRI-INR	\$24040	\$75657
211	-0C -> -0B -> PIPING	3-4A-3300011	Piping Inspection (Class2)	5Y	INT								I							IRI-INR	\$24041	\$75658
212	-0C -> -0B -> PIPING	3-4W6-0055013	Piping Inspection (Class4)	10Y	INT							I								IRI-INR	\$24254	\$74251
213	-0C -> -0B -> PIPING	3-4W6-0055015	Piping Inspection (Class4)	10Y	INT							I								IRI-INR	\$24255	\$74252
214	-0C -> -0B -> PIPING	3-4W6-0055017	Piping Inspection (Class4)	10Y	INT							I								IRI-INR	\$24256	\$74253
215	-0C -> -0B -> PIPING	3-4W6-3111001	Piping Inspection (Class4)	10Y	INT							I								IRI-INR	\$24329	\$75246
216	-0C -> -0B -> PIPING	3-4W6-3111002	Piping Inspection (Class4)	10Y	INT							I								IRI-INR	\$24330	\$75247
217	-0C -> -0B -> PIPING	3-4W6-3111001	Piping Inspection (Class4)	10Y	INT							I								IRI-INR	\$24334	\$75251
218	-0C -> -0B -> PIPING	3-4W6-3160006	Piping Inspection (Class4)	10Y	INT							I								IRI-INR	\$24369	\$75298
219	-0C -> -0B -> PIPING	3-4W6-3160023	Piping Inspection (Class4)	10Y	INT							I								IRI-INR	\$24371	\$75299
220	-0C -> -0B -> PIPING	3-4W6-3170005	Piping Inspection (Class4)	10Y	INT							I								IRI-INR	\$24380	\$75299
221	-0C -> -0B -> PIPING	3-4W6-3171005	Piping Inspection (Class4)	10Y	INT							I								IRI-INR	\$24382	\$75299
222	-0C -> -0B -> PIPING	3-4W6-3172009	Piping Inspection (Class4)	10Y	INT							I								IRI-INR	\$24384	\$75301
223	-0C -> -0B -> PIPING	3-4W6-005016	Piping Inspection (Class4)	10Y	INT							I								IRI-INR	\$24264	\$74301
224	-0C -> -0B -> PIPING	3-4W6-0055012	Piping Inspection (Class4)	10Y	INT							I								IRI-INR	\$24265	\$74302
225	-0C -> -0B -> PIPING	3-4W6-0055014	Piping Inspection (Class4)	10Y	INT							I								IRI-INR	\$24266	\$74303
226	-0C -> -0B -> PIPING	3-4W6-3111001	Piping Inspection (Class4)	10Y	INT							I								IRI-INR	\$24380	\$75311
227	-0C -> -0B -> PIPING	3-4W6-3111002	Piping Inspection (Class4)	10Y	INT							I								IRI-INR	\$24384	\$75311
228	-0C -> -0B -> PIPING	3-4W6-3111001	Piping Inspection (Class4)	10Y	INT							I								IRI-INR	\$24380	\$75315
229	-0C -> -0B -> PIPING	3-4W6-3160005	Piping Inspection (Class4)	10Y	INT							I								IRI-INR	\$24375	\$75332
230	-0C -> -0B -> PIPING	3-4W6-3160022	Piping Inspection (Class4)	10Y	INT							I								IRI-INR	\$24376	\$75333
231	-0C -> -0B -> PIPING	3-4W6-3170004	Piping Inspection (Class4)	10Y	INT							I								IRI-INR	\$24371	\$75339
232	-0C -> -0B -> PIPING	3-4W6-3171004	Piping Inspection (Class4)	10Y	INT							I								IRI-INR	\$24372	\$75339
233	-0C -> -0B -> PIPING	3-4W6-3172008	Piping Inspection (Class4)	10Y	INT							I								IRI-INR	\$24373	\$75340
234	-0C -> -0B -> PIPING	3-4A-4-001104	Piping Inspection (Class2)	5Y	INT															IRI-INR	\$24266	\$73980
235	-0C -> -0B -> PIPING	3-4A-4-0011051	Piping Inspection (Class2)	5Y	INT															IRI-INR	\$24267	\$73984
236	-0C -> -0B -> PIPING	3-4A-4-0011052	Piping Inspection (Class2)	5Y	INT															IRI-INR	\$24268	\$73985
237	-0C -> -0B -> PIPING	3-4A-4-0011055	Piping Inspection (Class2)	5Y	INT															IRI-INR	\$24270	\$73987
238	-0C -> -0B -> PIPING	3-4A-4-0319004	Piping Inspection (Class4)	10Y	INT							I								IRI-INR	\$24328	\$75247

Form No.
Effective Date 09.11.2022
Revision 3

Legend Text : B = Program Back-up C = Calibrate F = Function Test H = Overhaul I = Inspect L = Lubricate M = Strategy Plan P = Preventive Q = Check oil quality
S = Service T = Stand by condition check U = Running condition check V = Verify

Item	Item No.	Equipment No.	Maintenance Item Description	Cycle	Unit	Act. Type	APR	MAY	JUN	JUL	AUG	SEP	OCT	NOV	DEC	Inspection Center	Min. Plan	Maintenance
137	002-00-PPING	140-0005027	Piping Inspection (Class4L)	10Y	INF							I				IRI-INS	212048	212065
138	002-00-PPING	140-0005029	Piping Inspection (Class4L)	10Y	INF							I				IRI-INS	212049	212066
139	002-00-PPING	140-0005031	Piping Inspection (Class4L)	10Y	INF							I				IRI-INS	212050	212067
140	002-00-PPING	140-0005033	Piping Inspection (Class4L)	10Y	INF							I				IRI-INS	212051	212068
141	002-00-PPING	140-0005035	Piping Inspection (Class4L)	10Y	INF							I				IRI-INS	212052	212069
142	002-00-PPING	140-0005037	Piping Inspection (Class4L)	10Y	INF							I				IRI-INS	212053	212070
143	002-00-PPING	140-0005039	Piping Inspection (Class4L)	10Y	INF							I				IRI-INS	212054	212071
144	002-00-PPING	140-0005041	Piping Inspection (Class4L)	10Y	INF							I				IRI-INS	212055	212072
145	002-00-PPING	140-0005043	Piping Inspection (Class4L)	10Y	INF							I				IRI-INS	212056	212073
146	002-00-PPING	140-0005045	Piping Inspection (Class4L)	10Y	INF							I				IRI-INS	212057	212074
147	002-00-PPING	140-0005049	Piping Inspection (Class4L)	10Y	INF							I				IRI-INS	212058	212075
148	002-00-PPING	140-0005051	Piping Inspection (Class4L)	10Y	INF							I				IRI-INS	212059	212076
149	002-00-PPING	140-0005053	Piping Inspection (Class4L)	10Y	INF							I				IRI-INS	212061	212078
150	002-00-PPING	140-0005057	Piping Inspection (Class4L)	10Y	INF							I				IRI-INS	212062	212079
151	002-00-PPING	140-0005017	Piping Inspection (Class4L)	10Y	INF							I				IRI-INS	212064	212081
152	002-00-PPING	140-0005021	Piping Inspection (Class4L)	10Y	INF							I				IRI-INS	212066	212083
153	002-00-PPING	140-0005023	Piping Inspection (Class4L)	10Y	INF							I				IRI-INS	212067	212084
154	002-00-PPING	140-0005027	Piping Inspection (Class4L)	10Y	INF							I				IRI-INS	212068	212085
155	002-00-PPING	140-0005029	Piping Inspection (Class4L)	10Y	INF							I				IRI-INS	212069	212086
156	002-00-PPING	140-0005031	Piping Inspection (Class4L)	10Y	INF							I				IRI-INS	212070	212087
157	002-00-PPING	140-0005033	Piping Inspection (Class4L)	10Y	INF							I				IRI-INS	212071	212088
158	002-00-PPING	140-0005035	Piping Inspection (Class4L)	10Y	INF							I				IRI-INS	212072	212089
159	002-00-PPING	140-0005068	Piping Inspection (Class4L)	10Y	INF							I				IRI-INS	212077	212094
160	002-00-PPING	140-0005069	Piping Inspection (Class4L)	10Y	INF							I				IRI-INS	212078	212095
161	002-00-PPING	10-WN-3140011	Piping Inspection (Class4L)	5Y	INF							I				IRI-INS	212079	212096
162	002-00-PPING	10-WN-3330033	Piping Inspection (Class2)	5Y	INF							I				IRI-INS	212083	212091
163	002-00-PPING	10-WN-0021007	Piping Inspection (Class4L)	10Y	INF							I				IRI-INS	212029	212046
164	002-00-PPING	10-WN-0024008	Piping Inspection (Class4L)	10Y	INF							I				IRI-INS	212033	212050
165	002-00-PPING	10-WN-3144025	Piping Inspection (Class4L)	10Y	INF							I				IRI-INS	212048	212063
166	002-00-PPING	10-WN-3144028	Piping Inspection (Class4L)	10Y	INF							I				IRI-INS	212049	212066
167	002-00-PPING	10-WN-3167006	Piping Inspection (Class4L)	10Y	INF							I				IRI-INS	212073	212090
168	002-00-PPING	10-WN-3167034	Piping Inspection (Class4L)	10Y	INF							I				IRI-INS	212077	212094
169	002-00-PPING	10-WN-0021008	Piping Inspection (Class4L)	10Y	INF							I				IRI-INS	212079	212096
170	002-00-PPING	10-WN-0024005	Piping Inspection (Class4L)	10Y	INF							I				IRI-INS	212083	212090

Form No.
Effective Date 09.11.2022
Revision 3

Legend Text : B = Program Back-up C = Calibrate F = Function Test H = Overhaul I = Inspect L = Lubricate M = Strategy Plan P = Preventive Q = Check oil quality
S = Service T = Stand by condition check U = Running condition check V = Verify

Item	S. No.	Equipment No.	Maintenance Item Description	System	Minut.	Aid.	Type	JAN	FEB	MAR	APR	MAY	JUN	JUL	AUG	SEP	OCT	NOV	DEC	Gen-Code	Gen-Plan	Comments
239	DCC ->33 -PIPING	614-WO-330616	Piping Inspection (Class#)	10Y	INT								I							IRI-INSE	242486	278672
240	DCC ->33 -PIPING	614-WO-330616	Piping Inspection (Class#)	10Y	INT									I						IRI-INSE	242486	278672
241	DCC ->33 -PIPING	614-A-331007	Piping Inspection (Class#)	5Y	INT															IRI-INSE	242452	274453
242	DCC ->33 -PIPING	614-W-330410A	Piping Inspection (Class#)	10Y	INT							I								IRI-INSE	242632	274249
243	DCC ->33 -PIPING	614-W-0022101	Piping Inspection (Class#)	10Y	INT								I							IRI-INSE	242460	274249
244	DCC ->33 -PIPING	614-A-331501	Piping Inspection (Class#)	5Y	INT															IRI-INSE	244051	276668
245	DCC ->33 -PIPING	614-A-331503	Piping Inspection (Class#)	5Y	INT															IRI-INSE	244052	276669
246	DCC ->33 -PIPING	614-A-331505	Piping Inspection (Class#)	5Y	INT															IRI-INSE	244053	276670
247	DCC ->33 -PIPING	614-A-331507	Piping Inspection (Class#)	5Y	INT															IRI-INSE	244054	276671
248	DCC ->33 -PIPING	614-G-331802	Piping Inspection (Class#)	5Y	INT												I			IRI-INSE	244060	275714
249	DCC ->33 -PIPING	614-W-000636	Piping Inspection (Class#)	10Y	INT								I							IRI-INSE	242621	274238
250	DCC ->33 -PIPING	614-W-317006	Piping Inspection (Class#)	10Y	INT									I						IRI-INSE	243636	275263
251	DCC ->33 -PIPING	614-F-317008	Piping Inspection (Class#)	10Y	INT										I					IRI-INSE	243637	275264
252	DCC ->33 -PIPING	614-W-315509	Piping Inspection (Class#)	10Y	INT											I				IRI-INSE	243661	275266
253	DCC ->33 -PIPING	614-W-315507	Piping Inspection (Class#)	10Y	INT												I			IRI-INSE	243652	275267
254	DCC ->33 -PIPING	614-W-316937	Piping Inspection (Class#)	10Y	INT														I	IRI-INSE	243678	275295
255	DCC ->33 -PIPING	614-W-317009	Piping Inspection (Class#)	10Y	INT															IRI-INSE	243687	275304
256	DCC ->33 -PIPING	614-W-330406	Piping Inspection (Class#)	10Y	INT															IRI-INSE	244228	275843
257	DCC ->33 -PIPING	614-W-330407	Piping Inspection (Class#)	10Y	INT															IRI-INSE	244227	275844
258	DCC ->33 -PIPING	614-W-331007	Piping Inspection (Class#)	10Y	INT															IRI-INSE	244230	275847
259	DCC ->33 -PIPING	614-W-333105	Piping Inspection (Class#)	10Y	INT															IRI-INSE	244235	275852
260	DCC ->33 -PIPING	614-W-000635	Piping Inspection (Class#)	10Y	INT									I						IRI-INSE	242672	274289
261	DCC ->33 -PIPING	614-W-311707	Piping Inspection (Class#)	10Y	INT															IRI-INSE	243700	275317
262	DCC ->33 -PIPING	614-W-315508	Piping Inspection (Class#)	10Y	INT															IRI-INSE	243706	275323
263	DCC ->33 -PIPING	614-W-315506	Piping Inspection (Class#)	10Y	INT															IRI-INSE	243709	275324
264	DCC ->33 -PIPING	614-W-316936	Piping Inspection (Class#)	10Y	INT															IRI-INSE	243720	275329
265	DCC ->33 -PIPING	614-W-317807	Piping Inspection (Class#)	10Y	INT															IRI-INSE	243725	275342
266	DCC ->33 -PIPING	614-W-331006	Piping Inspection (Class#)	10Y	INT															IRI-INSE	244239	275856
267	DCC ->33 -PIPING	614-W-333104	Piping Inspection (Class#)	10Y	INT															IRI-INSE	244242	275859
268	DCC ->33 -PIPING	614-W-004402	Piping Inspection (Class#)	5Y	INT															IRI-INSE	242451	274032
269	DCC ->33 -PIPING	614-A-330104	Piping Inspection (Class#)	5Y	INT															IRI-INSE	244031	275648
270	DCC ->33 -PIPING	614-A-330908	Piping Inspection (Class#)	5Y	INT															IRI-INSE	244042	275659
271	DCC ->33 -PIPING	614-A-330909	Piping Inspection (Class#)	5Y	INT															IRI-INSE	244043	275660
272	DCC ->33 -PIPING	614-W-002301	Piping Inspection (Class#)	10Y	INT								I							IRI-INSE	242631	274241

Form No.
Effective Date 09.11.2022
Revision 3

Legend Text : B = Program Back-up C = Calibrate F = Function Test H = Overhaul I = Inspect L = Lubricate M = Strategy Plan P = Preventive Q = Check oil quality
S = Service T = Stand by condition check U = Running condition check V = Verify

[illegible]

Legend Text : B = Program Back-up C = Calibrate F = Function Test H = Overhaul I = Inspect L = Lubricate M = Strategy Plan P = Preventive Q = Check oil quality
S = Service T = Stand by condition check U = Running condition check V = Verify

Legend Text : B = Program Back-up C = Calibrate F = Function Test H = Overhaul I = Inspect L = Lubricate M = Strategy Plan P = Preventive Q = Check oil quality
S = Service T = Stand by condition check U = Running condition check V = Verify

Legend Text : B = Program Back-up C = Calibrate F = Function Test H = Overhaul I = Inspect L = Lubricate M = Strategy Plan P = Preventive Q = Check oil quality
S = Service T = Stand by condition check U = Running condition check V = Verify

Legend Text : B = Program Back-up C = Calibrate F = Function Test H = Overhaul I = Inspect L = Lubricate M = Strategy Plan P = Preventive Q = Check oil quality
S = Service T = Stand by condition check U = Running condition check V = Verify

PREVENTIVE MAINTENANCE YEARLY SCHEDULE

PLANT : DCC YEAR: 2023

Form No.

Effective Date 09.11.2022

Revision 3

Legend Text : R = Program Roll-over C = Calibrate F = Function Test H = Overhaul I = Inspect L = Lubricate M = Strategy Plan P = Preventive Q = Check oil quality

S = Service T = Stand by condition check U = Running condition check V = Verify

Item	Item No.	Equipment No.	Maintenance Item Description	Days	Units	Act.	Type	Jan	Feb	Mar	Apr	May	Jun	Jul	Aug	Sep	Oct	Nov	Dec	Work Center	Admin. Plan	Maintenance	
614	DCC -31-31P006A	DCC-31P006A-P01	INSPECTION OF DCC-31P006A	1Y	MT															R	RR-ARED	46099	46099
615	DCC -31-31P006A	DCC-31P006A-P01	INSPECTION OF DCC-31P006A	1Y	MT															R	RR-ARED	63380	104134
616	DCC -31-31P006B	DCC-31P006B-M01	STAND BY CONDITION CHECK OF 31P006B-M01	1Y	MT															R	RR-ARED	82533	102916
617	DCC -31-31P006B	DCC-31P006B-M01	FILLING GREASE OF 31P006B-M01	1Y	MT															R	RR-ARED	60913	101919
618	DCC -31-31P006B	DCC-31P006B-M01	FILLING GREASE 31P006B -M01	1Y	MT															R	RR-ARED	76736	110297
619	DCC -31-31P006B	DCC-31P006B-M01	STAND BY CONDITION CHECK OF 31P006B-M01	1Y	MT															R	RR-ARED	84741	110006
620	DCC -31-31P006B	DCC-31P006B-M01	FILLING GREASE 31P006B -M01	1Y	MT															R	RR-ARED	86026	110222
621	DCC -31-31P006B	DCC-31P006B-P01	VERIFICATION INSP & ANALYSIS M/C	6M	INT															R	RR-ARED	90487	110332
622	DCC -31-31P006B	DCC-31P006B-P01	VERIFICATION INSP & ANALYSIS M/C	6M	INT															R	RR-ARED	94488	110114
623	DCC -31-31P006B	DCC-31P006B-P01	INSPECTION OF DCC -31-31P006B -M01	1Y	MT															R	RR-ARED	92434	105232
624	DCC -31-31P006B	DCC-31P006B-P01	INSPECTION OF DCC -31-31P006B -M01	1Y	MT															R	RR-ARED	83376	104135
625	DCC -31-31P006A	DCC-31P006A-M01	STAND BY CONDITION CHECK OF 31P006A-M01	6M	INT															R	RR-ARED	29121	29121
626	DCC -31-31P006A	DCC-31P006A-M01	FILLING GREASE DCC-31-31P006A -M01	3M	INT															R	RR-ARED	64791	110101
627	DCC -31-31P006A	DCC-31P006A-P01	VERIFICATION INSP & ANALYSIS M/C	2M	INS															R	RR-ARED	94749	116335
628	DCC -31-31P006A	DCC-31P006A-P01	INSPECTION OF DCC-31P006A	6M	INT															R	RR-ARED	43101	44701
629	DCC -31-31P006B	DCC-31P006B-M01	STAND BY CONDITION CHECK OF 31P006B-M01	6M	INT															R	RR-ARED	28120	28120
630	DCC -31-31P006B	DCC-31P006B-M01	FILLING GREASE OF DCC-31P006B-M01	3M	INT															R	RR-ARED	113100	140654
631	DCC -31-31P006B	DCC-31P006B-P01	VERIFICATION INSP & ANALYSIS M/C	2M	INS															R	RR-ARED	94488	118264
632	DCC -31-31P006B	DCC-31P006B-P01	INSPECTION OF DCC-31P006B	6M	INT															R	RR-ARED	43102	44702
633	DCC -31-31P006A	DCC-31P006A-M01	STAND BY CONDITION CHECK OF 31P006A-M01	6M	INT															R	RR-ARED	29121	29121
634	DCC -31-31P006A	DCC-31P006A-M01	FILLING GREASE DCC-31P006A-M01	6M	INT															R	RR-ARED	67703	110113
635	DCC -31-31P006A	DCC-31P006A-M01	FILLING GREASE OF DCC -31-31P006A-M01	6M	INT															R	RR-ARED	86742	116337
636	DCC -31-31P006A	DCC-31P006A-P01	VERIFICATION INSP & ANALYSIS M/C	3M	INT															R	RR-ARED	94683	119427
637	DCC -31-31P006A	DCC-31P006A-P01	VERIFICATION INSP & ANALYSIS M/C	3M	INT															R	RR-ARED	94683	119282
638	DCC -31-31P006A	DCC-31P006A-P01	INSPECTION OF DCC-31P006A	6M	INT															R	RR-ARED	43103	44703
639	DCC -31-31P006B	DCC-31P006B-M01	STAND BY CONDITION CHECK OF 31P006B-M01	6M	INT															R	RR-ARED	28122	28122
640	DCC -31-31P006B	DCC-31P006B-M01	FILLING GREASE 31P006B -M01	6M	INT															R	RR-ARED	84733	103331
641	DCC -31-31P006B	DCC-31P006B-M01	FILLING GREASE DCC-31P006B-M01	6M	INT															R	RR-ARED	92865	110229
642	DCC -31-31P006B	DCC-31P006B-P01	VERIFICATION INSP & ANALYSIS M/C	3M	INT															R	RR-ARED	94510	116419
643	DCC -31-31P006B	DCC-31P006B-P01	VERIFICATION INSP & ANALYSIS M/C	3M	INT															R	RR-ARED	94684	119029
644	DCC -31-31P006B	DCC-31P006B-P01	INSPECTION OF DCC-31P006B	6M	INT															R	RR-ARED	43104	44704
645	DCC -31-31P006C	DCC-31P006C-M01	STAND BY CONDITION CHECK OF 31P006C-M01	6M	INT															R	RR-ARED	28123	28123
646	DCC -31-31P006C	DCC-31P006C-M01	STAND BY CONDITION CHECK OF 31P006C-M01	3M	INT															R	RR-ARED	28182	28182
647	DCC -31-31P006C	DCC-31P006C-M01	FILLING GREASE DCC-31P006C-M01	6M	INT															R	RR-ARED	84703	110114

PREVENTIVE MAINTENANCE YEARLY SCHEDULE																			Form No.	
PLANT : DCC YEAR: 2023																			Effective Date 09-11-2022	
																			Revision 3	
Legend Text : B = Program Back-up C = Oil Change F = Function Test H = Overhaul I = Inspect L = Lubricate M = Strategy Plan P = Preventive Q = Check oil quality S = Service T = Stand by condition check U = Running condition check V = Verify																				
Form	No.	Equipment No.	Maintenance Task Description	Qty	Units	Alt.	Type	AM	PM	APR	MAY	JUN	JUL	AUG	SEP	OCT	NOV	DEC	Wks Center	Wks. Plan
647	DCC +31	-31P011C	DCC-31P011C-M1	FILLING OIL/GEAR OF DCC +31 -31P011C-M01	64	AMT					I	L							RSR-4RE0	94710
648	DCC +31	-31P011C	DCC-31P011C-P01	VERIFICATION INSP & ANALYSIS M/C	34	INT													IRI-DM6	94710
649	DCC +31	-31P011C	DCC-31P011C-P01	VERIFICATION INSP & ANALYSIS M/C	34	INT													I	IRI-DM6
650	DCC +31	-31P012C	DCC-31P012C-P01	VERIFICATION OF DCC-31P012C	64	AMT					I								RSR-4RE0	94710
651	DCC +31	-31P012C	DCC-31P012C-M01	STAND BY CONDITION CHECK OF 31P012-M01	64	AMT					T								IRI-DM6	94824
652	DCC +31	-31P012C	DCC-31P012C-M01	FILLING OIL/GEAR OF DCC +31 -31P012C-M01	64	AMT													RSR-4RE0	94710
653	DCC +31	-31P012C	DCC-31P012C-P01	VERIFICATION INSP & ANALYSIS M/C	64	INT					I	I	I	I	I	I	I	I	IRI-DM6	94147
654	DCC +31	-31P012C	DCC-31P012C-P01	INSPECTION OF DCC-31P012C	1Y	AMT													RSR-4RE0	43106
655	DCC +31	-31P013A	DCC-31P013A-M01	FILLING OIL/GEAR DCC-31-31P013A-M01	1Y	AMT				L	T								IRI-DM6	94710
656	DCC +31	-31P013A	DCC-31P013A-M01	STAND BY CONDITION CHECK 31P013A-M01	1Y	AMT					T								RSR-4RE0	94710
657	DCC +31	-31P013A	DCC-31P013A-M01	FILLING OIL/GEAR OF 31P013A-M01	1Y	AMT													RSR-4RE0	94751
658	DCC +31	-31P013A	DCC-31P013A-M01	STAND BY CONDITION CHECK 31P013A-M01	1Y	AMT													RSR-4RE0	94710
659	DCC +31	-31P013A	DCC-31P013A-P01	VERIFICATION INSP & ANALYSIS M/C	40	INT													IRI-DM6	94086
660	DCC +31	-31P013A	DCC-31P013A-P01	INSPECTION OF DCC +31 -31P013A -P01	1Y	AMT													RSR-4RE0	83287
661	DCC +31	-31P013A	DCC-31P013A-P01	INSPECTION OF DCC +31 -31P013A -P01	1Y	AMT													RSR-4RE0	83288
662	DCC +31	-31P013B	DCC-31P013B-M01	STAND BY CONDITION CHECK 31P013B-M01	1Y	AMT													RSR-4RE0	23006
663	DCC +31	-31P013B	DCC-31P013B-M01	FILLING OIL/GEAR OF DCC +31 -31P013B -M01	1Y	AMT													RSR-4RE0	82538
664	DCC +31	-31P013B	DCC-31P013B-M01	STAND BY CONDITION CHECK 31P013B-M01	1Y	AMT						T							RSR-4RE0	84716
665	DCC +31	-31P013B	DCC-31P013B-M01	FILLING OIL/GEAR 31P013B -M01	1Y	AMT													RSR-4RE0	84732
666	DCC +31	-31P013B	DCC-31P013B-P01	VERIFICATION INSP & ANALYSIS M/C	64	INT													IRI-DM6	94087
667	DCC +31	-31P013B	DCC-31P013B-P01	INSPECTION OF DCC +31 -31P013B -P01	1Y	AMT													IRI-DM6	94088
668	DCC +31	-31P013B	DCC-31P013B-P01	INSPECTION OF DCC +31 -31P013B -P01	1Y	AMT					I	I	I	I	I	I	I	I	RSR-4RE0	83399
669	DCC +31	-31P013B	DCC-31P013B-P01	INSPECTION OF DCC +31 -31P013B -P01	1Y	AMT													RSR-4RE0	63300
670	DCC +31	-31P014A	DCC-31P014A-M01	STAND BY CONDITION CHECK OF 31P014A-M01	64	AMT				T									RSR-4RE0	28127
671	DCC +31	-31P014A	DCC-31P014A-M01	FILLING OIL/GEAR DCC-31P014A-M01	64	AMT					L	L							RSR-4RE0	87103
672	DCC +31	-31P014A	DCC-31P014A-M01	FILLING OIL/GEAR OF DCC +31 -31P014A-M01	64	AMT													RSR-4RE0	84742
673	DCC +31	-31P014A	DCC-31P014A-P01	VERIFICATION INSP & ANALYSIS M/C	34	INT						I	I	I	I	I	I	I	IRI-DM6	94863
674	DCC +31	-31P014A	DCC-31P014A-P01	VERIFICATION INSP & ANALYSIS M/C	34	INT													IRI-DM6	94864
675	DCC +31	-31P014A	DCC-31P014A-P01	INSPECTION OF DCC-31P014A	64	AMT					I	I	I	I	I	I	I	I	RSR-4RE0	42109
676	DCC +31	-31P014B	DCC-31P014B-M01	STAND BY CONDITION CHECK OF 31P014B-M01	64	AMT													RSR-4RE0	28128
677	DCC +31	-31P014B	DCC-31P014B-M01	FILLING OIL/GEAR 31P014B -M01	1Y	AMT							L	L					RSR-4RE0	84736
678	DCC +31	-31P014B	DCC-31P014B-M01	FILLING OIL/GEAR 31P014B -M01	64	AMT													RSR-4RE0	84743
679	DCC +31	-31P014B	DCC-31P014B-P01	VERIFICATION INSP & ANALYSIS M/C	34	INT					I	I	I	I	I	I	I	I	IRI-DM6	94150
680	DCC +31	-31P014B	DCC-31P014B-P01	VERIFICATION INSP & ANALYSIS M/C	34	INT					I	I	I	I	I	I	I	I	IRI-DM6	94864

PREVENTIVE MAINTENANCE YEARLY SCHEDULE																							Form No.		
PLANT : DCC YEAR: 2023																							Effective Date 09.11.2022		
																							Revision 3		
Legend Text : B = Program Backup C = Calibration F = Function Test H = Overhaul I = Inspect L = Lubricate M = Strategy Plan P = Preventive Q = Check oil quality S = Service T = Stand by condition check U = Running condition check V = Verify																									
Item	Eq. No.	Equipment No.	Maintenance Item Description	Qty	Unit	Min.	Alt.	Type	Jan	Feb	Mar	Apr	May	Jun	Jul	Aug	Sep	Oct	Nov	Dec	Remarks	Min.	Plan	Maintenance	
945	DCC +31 -31P005A	DCC-31P005A-401	STAND BY CONDITION CHECK 31P005A -401	1Y	MT															T	RR-ENDED	80266	102880		
946	DCC +31 -31P005A	DCC-31P005A-401	STAND BY CONDITION CHECK 31P005A-401	1Y	MT										T						RR-ENDED	84121	10171		
947	DCC +31 -31P005A	DCC-31P005A-401	FILLING GREASE OF 31P005A-401	1Y	MT										L						RR-ENDED	84712	10173		
948	DCC +31 -31P005A	DCC-31P005A-401	FILLING GREASE OF 31P005A-401	1Y	MT											L					RR-ENDED	80713	10176		
949	DCC +31 -31P005A	DCC-31P005A-401	FILLING GREASE OF DCC +31 -31P005A-401	1Y	MT															L	RR-ENDED	80715	11037		
950	DCC +31 -31P005A	DCC-31P005A-401	VEHIBATION INSP & ANALYSIS M/C	40	INT					I											I	RR-ENED	90866	19316	
951	DCC +31 -31P005A	DCC-31P005A-401	INSPECTION OF DCC-31P005A	1Y	MT															I	RR-ENDED	82302	10431		
952	DCC +31 -31P005B	DCC-31P005B-401	STAND BY CONDITION CHECK 31P005B-401	1Y	MT																RR-ENDED	28068	28068		
953	DCC +31 -31P005B	DCC-31P005B-401	FILLING GREASE OF DCC +31 -31P005B-401	1Y	MT															L	RR-ENDED	80538	10280		
954	DCC +31 -31P005B	DCC-31P005B-401	STAND BY CONDITION CHECK 31P005B-401	1Y	MT										T						RR-ENDED	84716	10199		
955	DCC +31 -31P005B	DCC-31P005B-401	FILLING GREASE OF DCC +31 -31P005B-401	1Y	MT											L					RR-ENDED	84722	10235		
956	DCC +31 -31P005B	DCC-31P005B-401	FILLING GREASE 31P005B -401	1Y	MT												L				RR-ENDED	80732	10196		
957	DCC +31 -31P005B	DCC-31P005B-401	VEHIBATION INSP & ANALYSIS M/C	40	INT					I										I	I	RR-ENED	90867	19323	
958	DCC +31 -31P005B	DCC-31P005B-401	VEHIBATION INSP & ANALYSIS M/C	40	INT															I	I	RR-ENED	90868	19311	
959	DCC +31 -31P005B	DCC-31P005B-401	INSPECTION OF DCC-31P005B	1Y	MT																RR-ENDED	82307	10432		
960	DCC +31 -31P005B	DCC-31P005B-401	INSPECTION OF DCC-31P005B	1Y	MT																RR-ENDED	83368	10433		
961	DCC +31 -31P005A	DCC-31P005A-401	STAND BY CONDITION CHECK OF 31P005A-401	1Y	MT																RR-ENDED	84711	10172		
962	DCC +31 -31P005A	DCC-31P005A-401	FILLING GREASE OF 31P005A-401	1Y	MT																RR-ENDED	84712	10174		
963	DCC +31 -31P005A	DCC-31P005A-401	FILLING GREASE OF 31P005A-401	1Y	MT															L	RR-ENDED	84713	10177		
964	DCC +31 -31P005A	DCC-31P005A-401	FILLING GREASE OF DCC +31 -31P005A-401	1Y	MT															L	RR-ENDED	80716	10178		
965	DCC +31 -31P005A	DCC-31P005A-401	STAND BY CONDITION CHECK 31P005A -401	1Y	MT															T	RR-ENDED	84733	11007		
966	DCC +31 -31P005A	DCC-31P005A-401A	STAND BY CONDITION CHECK 31P005A -401A	1Y	MT															T	RR-ENDED	85230	110429		
967	DCC +31 -31P005A	DCC-31P005A-401	STAND BY CONDITION CHECK OF 31P005A-401	1Y	MT										I	T					RR-ENDED	92577	116409		
968	DCC +31 -31P005A	DCC-31P005A-401	VEHIBATION INSP & ANALYSIS M/C	40	INT					I					I	I					I	RR-ENED	90866	19337	
969	DCC +31 -31P005A	DCC-31P005A-401	INSPECTION OF DCC +31 -31P005A -401	1Y	MT																RR-ENDED	80665	100510		
970	DCC +31 -31P005A	DCC-31P005A-401	INSPECTION OF DCC +31 -31P005A -401	12M	INT																I	RR-ENDED	80866	100511	
971	DCC +31 -31P005A	DCC-31P005A-401A	VEHIBATION INSP & ANALYSIS M/C	40	INT					I					I	I					I	RR-ENED	90866	19318	
972	DCC +31 -31P005A	DCC-31P005A-401A	INSPECTION OF DCC-31P005A-401A	1Y	MT																RR-ENDED	80865	100509		
973	DCC +31 -31P005A	DCC-31P005A-401A	INSPECTION OF DCC-31P005A-401A	1Y	MT															I	RR-ENDED	83361	104317		
974	DCC +31 -31P005B	DCC-31P005B-401	STAND BY CONDITION CHECK 31P005B-401	1Y	MT															T	RR-ENDED	85219	102918		
975	DCC +31 -31P005B	DCC-31P005B-401	STAND BY CONDITION CHECK 31P005B-401	1Y	MT										T						RR-ENDED	82532	102914		
976	DCC +31 -31P005B	DCC-31P005B-401	FILLING GREASE 31P005B -401	1Y	MT												L				RR-ENDED	84736	102987		
977	DCC +31 -31P005B	DCC-31P005B-401	FILLING GREASE 31P005B -401	1Y	MT											L					RR-ENDED	84038	100233		
978	DCC +31 -31P005B	DCC-31P005B-401	FILLING GREASE OF 31P005B-401	1Y	MT															L	RR-ENDED	84809	100178		

[illegible]

Form No.
Effective Date 09.11.2022
Revision 3

[illegible]

Form No.
Effective Date 09.11.2022
Revision 3

Legend Test : B = Program Backlog C = Calibration Function Test H = Overhaul I = Inspect L = Lubricate M = Strategy Plan P = Preventive Q = Check oil quality S = Service T = Stand by condition check U = Running condition check V = Verify																				
Item	Fl. No.	Equipment No.	Maintenance Item Description	Depth	Mount, Act, Type	RR	RR	RR	RR	RR	RR	RR	RR	RR	RR	RR	RR	RR	RR	RR
817	DOC -31-31P020C	DOC-31P020C-401	STAND BY CONDITION CHECK OF 31P020C-401	6M	RM														RR-ENDED	28194
818	DOC -31-31P020C	DOC-31P020C-401	FILLING GREASE DOC-31P020C-401	6M	RM														RR-ENDED	847103
819	DOC -31-31P020C	DOC-31P020C-401	FILLING GREASE OF DOC -31-31P020C-401	6M	RM														RR-ENDED	84710
820	DOC -31-31P020C	DOC-31P020C-401	VIBRATION INSP & ANALYSIS M/C	3M	INF														IRI-PAVED	9450
821	DOC -31-31P020C	DOC-31P020C-401	VIBRATION INSP & ANALYSIS M/C	3M	INF														IRI-PAVED	94683
822	DOC -31-31P020C	DOC-31P020C-401	INSPECTION OF DOC-31P020C	6M	RM														RR-ENDED	84710
823	DOC -31-31P030A	DOC-31P030A-401	STAND BY CONDITION CHECK OF 31P030A-401	6M	RM														RR-PAVED	28195
824	DOC -31-31P030A	DOC-31P030A-401	FILLING GREASE OF DOC-31-31P030A -401	3M	INF														RR-ENDED	109180
825	DOC -31-31P030A	DOC-31P030A-401	VIBRATION INSP & ANALYSIS M/C	2M	INS														IRI-PAVED	94149
826	DOC -31-31P030A	DOC-31P030A-401	INSPECTION OF DOC-31P030A	2M	RM														RR-ENDED	847103
827	DOC -31-31P030B	DOC-31P030B-401	STAND BY CONDITION CHECK OF 31P030B-401	6M	RM														RR-ENDED	28196
828	DOC -31-31P030B	DOC-31P030B-401	FILLING GREASE DOC-31-31P030B-401	3M	INF														RR-ENDED	84717
829	DOC -31-31P030B	DOC-31P030B-401	VIBRATION INSP & ANALYSIS M/C	2M	INS														IRI-PAVED	94148
830	DOC -31-31P030B	DOC-31P030B-401	INSPECTION OF DOC-31P030B	2M	RM														RR-ENDED	77940
831	DOC -31-31P031A	DOC-31P031A-401	STAND BY CONDITION CHECK 31P031A -401	6M	RM														RR-ENDED	28197
832	DOC -31-31P031A	DOC-31P031A-401	FILLING GREASE OF DOC -31-31P031A -401	6M	RM														RR-ENDED	84717
833	DOC -31-31P031A	DOC-31P031A-401	INSPECTION OF DOC-31P031A	6M	RM														RR-ENDED	78539
834	DOC -31-31P031B	DOC-31P031B-401	STAND BY CONDITION CHECK 31P031B -401	6M	RM														RR-ENDED	28132
835	DOC -31-31P031B	DOC-31P031B-401	FILLING GREASE OF DOC -31-31P031B-401	6M	RM														RR-ENDED	84712
836	DOC -31-31P031C	DOC-31P031C-401	STAND BY CONDITION CHECK 31P031C -401	6M	RM														RR-ENDED	28199
837	DOC -31-31P046A	DOC-31P046A-401	STAND BY CONDITION CHECK OF 31P046A-401	6M	RM														RR-ENDED	84715
838	DOC -31-31P046A	DOC-31P046A-401	FILLING GREASE DOC-31P046A-401	6M	RM														RR-ENDED	847023
839	DOC -31-31P046A	DOC-31P046A-401	FILLING GREASE OF DOC -31-31P046A-401	6M	RM														IRI-PAVED	94742
840	DOC -31-31P046A	DOC-31P046A-401	VIBRATION INSP & ANALYSIS M/C	3M	INF														IRI-PAVED	94683
841	DOC -31-31P046A	DOC-31P046A-401	VIBRATION INSP & ANALYSIS M/C	3M	INF														IRI-PAVED	94684
842	DOC -31-31P046B	DOC-31P046B-401	STAND BY CONDITION CHECK OF 31P046B-401	6M	RM														RR-PAVED	94548
843	DOC -31-31P046B	DOC-31P046B-401	FILLING GREASE DOC-31-31P046B-401	6M	RM														RR-ENDED	84708
844	DOC -31-31P046B	DOC-31P046B-401	FILLING GREASE 31P046B -401	6M	RM														RR-ENDED	84743
845	DOC -31-31P046B	DOC-31P046B-401	VIBRATION INSP & ANALYSIS M/C	3M	INF														IRI-PAVED	94550
846	DOC -31-31P046B	DOC-31P046B-401	VIBRATION INSP & ANALYSIS M/C	3M	INF														IRI-PAVED	94584
847	DOC -31-31P046B	DOC-31P046B-401	INSPECTION OF DOC-31P046B	6M	RM														RR-ENDED	80570
848	DOC -31-31P046C	DOC-31P046C-401	STAND BY CONDITION CHECK OF 31P046C-401	6M	RM														RR-ENDED	92596
849	DOC -31-31P046C	DOC-31P046C-401	FILLING GREASE OF DOC -31-31P046C-401	6M	RM														RR-ENDED	92597
850	DOC -31-31P046C	DOC-31P046C-401	FILLING GREASE OF 31P046C-401	6M	RM														RR-ENDED	92598

Form No.
Effective Date 09.11.2022
Revision 3

[illegible]

Form No.
Effective Date 09.11.2022
Revision 3

Legend Test : B = Program Back-up, C = Calibrate, F = Function Test, H = Overhaul, I = Inspect, L = Lubricate, M = Strategy Plan, P = Preventive, Q = Check oil quality S = Service, T = Stand by condition, check, U = Running condition, check, V = Verify																			
Item	U. No.	Component No.	Maintenance Item Description	Qty	Units	Act. Type	BS	BSB	BSH	BSL	BSM	BSQ	BSR	BSU	BSV	BSW	BSX	BSY	BSZ
851	DOC	+31	-31P046C	DOC-31P046C-P01	3M	INT			I		I				I			RI-DWB	94150
852	DOC	+31	-31P046P	DOC-31P046C-P01	3M	INT			I		I				I			RI-DWB	94483
853	DOC	+31	-31P055A	DOC-31P055A-P01	2M	INS			I		I				I			RI-DWB	94148
854	DOC	+31	-31P055B	DOC-31P055B-P01	2M	INS			I		I				I			RI-DWB	94149
855	DOC	+31	-31P055B	DOC-31P055B-P01	6M	INT			I		I				I			RIE-WED	81943
856	DOC	+31	-31S001	DOC-31S001-LB01	3M	INT			I		I				I			RI-DWB	94682
857	DOC	+31	-31S001	DOC-31S001-LB01	2M	INT			I		I				I			RIE-WED	107075
858	DOC	+31	-31S001	DOC-31S001-LB01	6M	INT			I		I				I			RIE-WED	107020
859	DOC	+31	-31S001	DOC-31S001-LB01	2M	INT			I		I				I			RIE-WED	107021
860	DOC	+31	-31S001	DOC-31S001-LB02	6M	INT			I		I				I			RIE-WED	107021
861	DOC	+31	-31S001	DOC-31S001-LB01	3M	INT			I		I				I			RIE-WED	43149
862	DOC	+31	-31S001	DOC-31S001-LB01	1Y	INT			I		P				I			CR-OHL	43150
863	DOC	+31	-31S001	DOC-31S001-LB01	3M	INT			I		I				I			RIE-WED	43152
864	DOC	+2Z	-2UMM	DOC-31S001-LB02	2M	INT			I		I				I			13M-CU	43154
865	DOC	+31	-31S001	DOC-31S001-LB01	3M	INT			I		I				I			RIE-WED	43156
866	DOC	+31	-31S001	DOC-31S001-LB01	6M	INT			I		I				I			RIE-WED	121988
867	DOC	+31	-31INTERCM	DOC-31S001	6M	INT			F						I			RIE-WED	121989
868	DOC	+31	-31INTERCM	DOC-31S001	6M	INT			F						I			RIE-WED	121990
869	DOC	+31	-31INTERCM	DOC-31S001	6M	INT			F						I			RIE-WED	121992
870	DOC	+31	-31INTERCM	DOC-31S011	6M	INT			F						I			RIE-WED	121997
871	DOC	+31	-31INTERCM	DOC-31S014	6M	INT			F						I			RIE-WED	121990
872	DOC	+31	-31INTERCM	DOC-31S018	6M	INT			F						I			RIE-WED	121992
873	DOC	+31	-31INTERCM	DOC-31S018	6M	INT			F						I			RIE-WED	121994
874	DOC	+31	-31INTERCM	DOC-31S01	6M	INT			F						I			RIE-WED	121997
875	DOC	+31	-31S104B	DOC-31S104B-02-0401	6M	INT			F						I			RIE-WED	62500
876	DOC	+31	-31S001	DOC-31S001-P91A	2M	INS			I		I				I			RIE-WED	94148
877	DOC	+31	-31S001	DOC-31S001-P91A	6M	INT			I		I				I			RIE-WED	43158
878	DOC	+31	-31S001	DOC-31S001-P91B	2M	INS			I		I				I			RII-EWB	94148
879	DOC	+31	-31S001	DOC-31S001-P91B	6M	INT			I		I				I			RIE-WED	43159
880	DOC	+31	-31S001	DOC-31S001-P92A	6M	INT			I		I				I			RII-EWB	94688
881	DOC	+31	-31S001	DOC-31S001-P92A	1Y	INT			I		I				I			RIE-WED	83391
882	DOC	+31	-31S001	DOC-31S001-P92A	1Y	INT			I		I				I			RIE-WED	83392
883	DOC	+31	-31S001	DOC-31S001-P90B	6M	INT			I		I				I			RII-EWB	94687
884	DOC	+31	-31S001	DOC-31S001-P90B	6M	INT			I		I				I			RII-EWB	94688

Form No.

Effective Date 09.11.2022

Revision 3

S = Service T = Stand by condition check U = Running condition check V = Verify

Item	PL No.	Equipment No.	Maintenance Item Description	Cycle	Unit	Act.	Type	AS	TS	SR	GR	MS	LR	ALC	SP	CT	DN	CC	Refr. Cost	Val.	Plat	Maintenance
953	DC3	+33P001A	DC3-33P001A-401	FILLING GREASE 33P001A -401	1Y	INT													RRE-EHD	84838	110230	
954	DC3	+33P001A	DC3-33P001A-501	VERIFICATION INSP & ANALYSIS MAC	4Q	INT													IRU-EWD	84887	193335	
955	DC3	+33P001A	DC3-33P001A-601	VERIFICATION INSP & ANALYSIS MAC	4Q	INT													IRU-EWD	84887	193335	
956	DC3	+33P001A	DC3-33P001A-701	INSPECTION OF DC3-33P001A -701	1Y	INT													RRE-EHD	85009	104201	
957	DC3	+33P001A	DC3-33P001A-801	INSPECTION OF DC3-33P001A -801	1Y	INT													IRU-EHD	85041	104202	
958	DC3	+33P001B	DC3-33P001B-10401	FILLING GREASE 33P001B -401	1Y	INT													RRE-EHD	85732	130105	
959	DC3	+33P001B	DC3-33P001B-10401	FILLING GREASE 33P001B -401	1Y	INT													RRE-EHD	85736	130209	
960	DC3	+33P001B	DC3-33P001B-10401	STAND BY COITION CHECK OF 33P001B-401	1Y	INT													IRU-EHD	85737	130209	
961	DC3	+33P001B	DC3-33P001B-10401	STAND BY COITION CHECK 33P001B -401	1Y	INT													RRE-EHD	85738	130300	
962	DC3	+33P001B	DC3-33P001B-10401	FILLING GREASE OF DC3-33P001B -401	1Y	INT													IRU-EHD	85739	140302	
963	DC3	+33P001B	DC3-33P001B-10401	VERIFICATION INSP & ANALYSIS MAC	4Q	INT													IRU-EWD	85866	193322	
964	DC3	+33P001B	DC3-33P001B-10401	INSPECTION OF DC3-33P001B -701	1Y	INT													RRE-EHD	85902	104203	
965	DC3	+33P001B	DC3-33P001B-10401	INSPECTION OF DC3-33P001B -701	1Y	INT													IRU-EHD	85903	104204	
966	DC3	+33P001C	DC3-33P001C-401	STAND BY COITION CHECK OF 33P001C-401	6M	INT													TRE-EHD	85985	26285	
967	DC3	+33P001C	DC3-33P001C-501	INSPECTION OF DC3-33P001C -501	6M	INT													IRU-EHD	85989	1305	
968	DC3	+33P003A	DC3-33P003A-401	FILLING GREASE DC3-33P003A-401	3Q	INT													IRU-EHD	85981	100340	
969	DC3	+33P003A	DC3-33P003A-501	VERIFICATION INSP & ANALYSIS MAC	5Q	INT													IRU-EWD	86147	118172	
970	DC3	+33P003B	DC3-33P003B-401	STAND BY COITION CHECK OF 33P003B-401	6M	INT													RRE-EHD	25266	28286	
971	DC3	+33P003B	DC3-33P003B-401	FILLING GREASE DC3-33P003B-401	6M	INT													RRE-EHD	121912	110122	
972	DC3	+33P0010	DC3-33P0010-401	STAND BY COITION CHECK 33P0010 -401	6M	INT													RRE-EHD	25287	28287	
973	DC3	+33P0010	DC3-33P0010	INSP. & FUNCTION TEST 33-5-2	6M	INT													RRE-EHD	121912	150728	
974	DC3	+33P0010	DC3-33P0010	INSP. & FUNCTION TEST 33-5-4	6M	INT													RRE-EHD	121914	150730	
975	DC3	+33P0010	DC3-33P0010	INSP. & FUNCTION TEST 33-5-5	6M	INT													RRE-EHD	121915	150731	
976	DC3	+33P0010	DC3-33P0010	INSP. & FUNCTION TEST 33-5-6	6M	INT													RRE-EHD	121916	150732	
977	DC3	+33P0010	DC3-33P0010	INSP. & FUNCTION TEST 33-5-9	6M	INT													RRE-EHD	121920	150735	
978	DC3	+33P0010	DC3-33P0010	INSP. & FUNCTION TEST 33-9-11	6M	INT													RRE-EHD	121922	150931	
979	DC3	+34-INT-ALARM	DC3-34-INT-ALARM	Function test fire alarm pass button Unit	5Q	INT													RRE-EHD	256158	296878	
980	DC3	+34-GRND	DC3-34-GRND	RM GROUNDING & LIGHTNING	1Y	INT													RRE-EHD	246426	275887	
981	DC3	+34-INTERCOM	DC3-34001	INSP. & FUNCTION TEST 34-4-1	6M	INT													RRE-EHD	121964	150790	
982	DC3	+34-INTERCOM	DC3-34002	INSP. & FUNCTION TEST 34-4-3	6M	INT													RRE-EHD	121926	150740	
983	DC3	+34-INTERCOM	DC3-34006	INSP. & FUNCTION TEST 34-4-6	6M	INT													RRE-EHD	121928	150743	
984	DC3	+34-INTERCOM	DC3-34008	INSP. & FUNCTION TEST 34-4-7	6M	INT													RRE-EHD	121929	150934	
985	DC3	+34-INTERCOM	DC3-34009	INSP. & FUNCTION TEST 34-4-8	6M	INT													RRE-EHD	121930	150746	
986	DC3	+34-SM001	DC3-34001-4-T121	INSPECTION ELECTRIC HEATER SYSTEM	6M	INT													RRE-EHD	28300	28300	

Form No.

Effective Date 09.11.2022

Revision 3

S = Service T = Stand by condition check U = Running condition check V = Verify

Item	FL No.	Equipment No.	Maintenance Plan Description	Cycle	Wiring Act.	Type	AS	TS	MS	GS	LS	KS	AS	AS	SP	CS	CV	CV (for Control)	Min. Plan	Maintenance
987	002	-34-34P0001	INSPECTION ELECTRIC HEATER SYSTEM	6M	INT		I						I					RS-EBED	28301	28301
988	002	-34-34P0001	INSPECTION ELECTRIC HEATER SYSTEM	6M	INT		I						I					RS-EBED	28302	28302
989	002	-34-34P0001	IRI INDC -34-34P0001	6M	INT		I						I					CS-CH-PL	60234	110112
990	002	-34P0001	OIL INSP & ANALYSIS M/C	1M	INS		I						I					IRI-INOL	99336	100966
991	002	-34-34P0001	VIBRATION INSP & ANALYSIS M/C	1M	INS		I						I					IRI-INVB	99147	100173
992	002	-34P0002	Showered Crane Inspect & Load Test L&W	6M	INT		I						I					IRI-INVB	97442	121354
993	002	-34-34P0002	INSPECTION OVERHEAD CRANE OF 34002A-01	3M	INT		I						I					RS-EBED	43040	100430
994	002	-34-34P0002	INSPEC. BRANCHION TEST OF 34002A-001 (29	3M	INT		I						I					RS-EBED	43185	46785
995	002	-34-34P0002	IRI INDC -34-34P0002	6M	INT		I						I					CS-CH-PL	60234	110112
996	002	-34-34P0002	OIL INSP & ANALYSIS M/C	1M	INS		I						I					IRI-INOL	99336	100966
997	002	-34-34P0002	VIBRATION INSP & ANALYSIS M/C	1M	INS		I						I					IRI-INVB	99147	100174
998	002	-34-34P0001A	STAND BY CONDITION CHECK 34P001A -401	1Y	INT		I						I					RS-EBED	82530	102912
999	002	-34-34P0001A	FILLING GREASE OF 34P001A-001	1Y	INT		I						I					RS-EBED	84712	100175
1,000	002	-34P0001A	FILLING GREASE OF DC2-34-34P0001A-001	1Y	INT		I						I					RS-EBED	84716	100166
1,001	002	-34-34P0001A	STAND BY CONDITION CHECK OF 34P001A-001	1Y	INT		I						I					RS-EBED	86988	100622
1,002	002	-34P0001A-01	VIBRATION INSP & ANALYSIS M/C	6M	INT		I						I					IRI-INVB	94886	100323
1,003	002	-34-34P0001A	INSPECTION OF DC2-34P0001A -401	1Y	INT		I						I					RS-EBED	83336	100690
1,004	002	-34-34P0001A	INSPECTION OF DC2-34P0001A -401	1Y	INT		I						I					RS-EBED	83336	100486
1,005	002	-34-34P0001B	STAND BY CONDITION CHECK OF 34P001B-001	1Y	INT		T						I					RS-EBED	82536	102917
1,006	002	-34-34P0001B	FILLING GREASE OF 34P001B-001	1Y	INT		T						I					RS-EBED	84721	100229
1,007	002	-34-34P0001B	FILLING GREASE 34P001B -401	1Y	INT		T						I					RS-EBED	84716	100106
1,008	002	-34-34P0001B	STAND BY CONDITION CHECK OF 34P001B-001	1Y	INT		T						I					RS-EBED	84701	100038
1,009	002	-34-34P0001B	INSPECTION OF DC2-34-34P0001B -401	1Y	INT		T						I					RS-EBED	80589	100633
1,010	002	-34-34P0001B	VIBRATION INSP & ANALYSIS M/C	6M	INT		T						I					IRI-INVB	94887	100330
1,011	002	-34P0001B-01	VIBRATION INSP & ANALYSIS M/C	6M	INT		T						I					IRI-INVB	94888	100331
1,012	002	-34-34P0001B	INSPECTION OF DC2-34P0001B -401	1Y	INT		T						I					RS-EBED	83397	102034
1,013	002	-34-34P0001B	INSPECTION OF DC2-34P0001B -401	1Y	INT		T						I					RS-EBED	83336	100490
1,014	002	-34P0002A	STAND BY CONDITION CHECK OF 34P002A-001	6M	INT		T						I					RS-EBED	28307	28307
1,015	002	-34P0002A	FILLING GREASE DC2-34P0002A-001	6M	INT		T						I					RS-EBED	84703	100123
1,016	002	-34-34P0002A	FILLING GREASE OF DC2-34-34P0002A-001	6M	INT		T						I					RS-EBED	84712	100330
1,017	002	-34-34P0002A	VIBRATION INSP & ANALYSIS M/C	3M	INT		I						I					IRI-INVB	94883	100521
1,018	002	-34-34P0002A	VIBRATION INSP & ANALYSIS M/C	3M	INT		I						I					IRI-INVB	94884	100527
1,019	002	-34-34P0002A	INSPECTION OF DC2-34P002A	6M	INT		T						I					RS-EBED	43168	44788
1,020	002	-34-34P0002B	STAND BY CONDITION CHECK OF 34P002B-001	6M	INT		T						I					RS-EBED	28308	28308

Form No. _____
Effective Date 09.11.2022
Revision 3

Legend Text : B = Program Back-up C = Calibrate F = Function Test H = Overhaul I = Inspect L = Lubricate M = Strategy Plan P = Preventive Q = Check oil quality
S = Service T = Stand by condition check U = Running condition check V = Verify

[illegible]

Form No. _____
Effective Date 09.11.2022
Revision 3

Legend Text : B = Program Back-up C = Calibrate F = Function Test H = Overhaul I = Inspect L = Lubricate M = Strategy Plan P = Preventive Q = Check oil quality
S = Service T = Stand by condition check U = Running condition check V = Verify

[illegible]

Form No.
Effective Date 09.11.2022
Revision 3

Legend Text : B = Program Back-up C = Calibrate F = Function Test H = Overhaul I = Inspect L = Lubricate M = Strategy Plan P = Preventive Q = Check oil quality
S = Service T = Stand by condition check U = Running condition check V = Verify

Item	Rev.	Equipment No.	Maintenance Item Description	Cycle	Unit	Act. Type	TS	ES	MS	AS	LS	CS	PS	NS	SC	Back Color	Min. Plan	Maintenance
1.089	002 -11 -OHM_OD	DDA-AT3301701	VERIFY GC ANALYZER	2M	PMT		V	V	V	V	V	V	V	V	V	OHM-GW	11216	42816
1.090	002 -13 -OHM_OD	DDA-AT3301701	VERIFY GC DETECTOR AT33001	4M	PMT											OHM-GW	256668	292027
1.091	002 -13 -OHM_OD	DDA-AT3301902	VERIFY GAS DETECTOR AT33002	4M	PMT											OHM-GW	256667	292026
1.092	002 -13 -OHM_OD	DDA-AT3300303	VERIFY GAS DETECTOR AT33003	4M	PMT											OHM-GW	256668	292028
1.093	002 -13 -OHM_OD	DDA-AT3300404	VERIFY GAS DETECTOR AT33004	4M	PMT											OHM-GW	256669	292029
1.094	002 -13 -OHM_OD	DDA-AT3300505	VERIFY GAS DETECTOR AT33005	4M	PMT											OHM-GW	256673	293034
1.095	002 -13 -OHM_OD	DDA-AT3300606	VERIFY GAS DETECTOR AT33006	4M	PMT											OHM-GW	256670	292061
1.096	002 -13 -OHM_OD	DDA-AT3300707	VERIFY GAS DETECTOR AT33007	4M	PMT											OHM-GW	256671	292062
1.097	002 -13 -OHM_OD	DDA-AT3300808	VERIFY GAS DETECTOR AT33008	4M	PMT											OHM-GW	256672	292063
1.098	002 -13 -OHM_OD	DDA-AT3300909	VERIFY GAS DETECTOR AT33009	4M	PMT											OHM-GW	256673	292064
1.099	002 -13 -OHM_OD	DDA-AT3300102	VERIFY GC DETECTOR AT330012	4M	PMT											OHM-GW	256666	292037
1.100	002 -13 -OHM_GWS	DDA-AT3300901A	VERIFY GC ANALYZER (SW RAMES)	2M	PMT											OHM-GW	412026	428026
1.101	002 -13 -OHM_GWS	DDA-AT3300901A	INSPECT AND CLEAN MOISTURE ANALYZER	4M	PMT		I	I	I	I	I	I	I	I	I	OHM-GW	41209	42809
1.102	002 -13 -OHM_GWS	DDA-AT3300901B	INSPECT AND CLEAN MOISTURE ANALYZER	4M	PMT		I	I	I	I	I	I	I	I	I	OHM-GW	41210	42810
1.103	002 -13 -OHM_GWS	DDA-AT3300901C	INSPECT AND CLEAN MOISTURE ANALYZER	4M	PMT		I	I	I	I	I	I	I	I	I	OHM-GW	41211	42811
1.104	002 -13 -OHM_OD	DDA-AT3300902	VERIFY INO ANALYZER	2M	PMT		V	V	V	V	V	V	V	V	V	OHM-GW	41223	42823
1.105	002 -13 -OHM_OD	DDA-AT3301001	VERIFY GC ANALYZER AT330101	2M	PMT		V	V	V	V	V	V	V	V	V	OHM-GW	41217	42817
1.106	002 -13 -OHM_OD	DDA-AT3301301	VERIFY GC ANALYZER AT3301301	2M	PMT		V	V	V	V	V	V	V	V	V	OHM-GW	41218	42818
1.107	002 -13 -OHM_OD	DDA-AT3301302	VERIFY GAS DETECTOR AT3301302	4M	PMT											OHM-GW	256614	293036
1.108	002 -13 -OHM_OD	DDA-AT3301602	VERIFY GC ANALYZER	2M	PMT		V	V	V	V	V	V	V	V	V	OHM-GW	41219	42819
1.109	002 -13 -OHM_OD	DDA-AT3301701	VERIFY GC ANALYZER	2M	PMT		V	V	V	V	V	V	V	V	V	OHM-GW	41220	42820
1.110	002 -13 -OHM_OD	DDA-AT3301801A	INSPECT AND CLEAN MOISTURE ANALYZER	4M	PMT		I	I	I	I	I	I	I	I	I	OHM-GW	41207	42807
1.111	002 -13 -OHM_GWS	DDA-AT3301801B	INSPECT AND CLEAN MOISTURE ANALYZER	4M	PMT		I	I	I	I	I	I	I	I	I	OHM-GW	41208	42808
1.112	002 -13 -OHM_GWS	DDA-AT3301901	VERIFY GC ANALYZER (SW RAMES)	2M	PMT		V	V	V	V	V	V	V	V	V	OHM-GW	41221	42821
1.113	002 -13 -OHM_GWS	DDA-AT3302201	VERIFY GC ANALYZER (SW RAMES)	2M	PMT		V	V	V	V	V	V	V	V	V	OHM-GW	41229	42829
1.114	002 -14 -OHM_OD	DDA-AT3400001	VERIFY GAS DETECTOR AT34001	4M	PMT											OHM-GW	256674	292065
1.115	002 -14 -OHM_OD	DDA-AT3400202	VERIFY GAS DETECTOR AT34002	4M	PMT											OHM-GW	256675	292066
1.116	002 -14 -OHM_OD	DDA-AT3400303	VERIFY GAS DETECTOR AT34003	4M	PMT											OHM-GW	256676	292067
1.117	002 -14 -OHM_OD	DDA-AT3400404	VERIFY GAS DETECTOR AT34004	4M	PMT											OHM-GW	256677	292068
1.118	002 -14 -OHM_OD	DDA-AT3400505	VERIFY GAS DETECTOR AT34005	4M	PMT											OHM-GW	256678	292069
1.119	002 -14 -OHM_OD	DDA-AT3400606	VERIFY GAS DETECTOR AT34006	4M	PMT											OHM-GW	256679	292070
1.120	002 -14 -OHM_OD	DDA-AT3400707	VERIFY GAS DETECTOR AT34007	4M	PMT											OHM-GW	256680	292071
1.121	002 -14 -OHM_OD	DDA-AT3400808	VERIFY GAS DETECTOR AT34008	4M	PMT											OHM-GW	256681	292072
1.122	002 -14 -OHM_OD	DDA-AT3400909	VERIFY GAS DETECTOR AT34009	4M	PMT											OHM-GW	256682	292073

Form No.
Effective Date 09.11.2022
Revision 3

Legend Text : B = Program Back-up C = Calibrate F = Function Test H = Overhaul I = Inspect L = Lubricate M = Strategy Plan P = Preventive Q = Check oil quality
S = Service T = Stand by condition check U = Running condition check V = Verify

[illegible]

PREVENTIVE MAINTENANCE YEARLY SCHEDULE
PLANT: DCC YEAR: 2023

Form No. _____
Effective Date 09.11.2022
Revision 3

Legend Text : B = Program Back-up C = Calibrate F = Function Test H = Overhaul I = Inspect L = Lubricate M = Strategy Plan P = Preventive Q = Check oil quality
S = Service T = Stand by condition check U = Running condition check V = Verify

PLANT: DOC YEAR: 2023

Form No.
Effective Date 09.11.2022
Revision 3

Legend Text : B = Program Back-up C = Calibrate F = Function Test H = Overhaul I = Inspect L = Lubricate M = Strategy Plan P = Preventive Q = Check oil quality
S = Service T = Stand by condition check U = Running condition check V = Verify

PREVENTIVE MAINTENANCE YEARLY SCHEDULE
PLANT: DCC YEAR: 2023

Form No. _____
Effective Date 09.11.2022
Revision 3

Legend Text : B = Program Back-up C = Calibrate F = Function Test H = Overhaul I = Inspect L = Lubricate M = Strategy Plan P = Preventive Q = Check oil quality
S = Service T = Stand by condition check U = Running condition check V = Verify

PLANT: DCC YEAR: 2023

Form No.
Effective Date 09.11.2022
Revision 3

Legend Text : B = Program Back-up C = Calibrate F = Function Test H = Overhaul I = Inspect L = Lubricate M = Strategy Plan P = Preventive Q = Check oil quality
S = Service T = Stand by condition check U = Running condition check V = Verify

PRESIDENT MAINTENANCE YEARLY SCHEDULE																	Form No.				
PLANT DOO Year: 2023																	Effective Date 09-11-2022				
																	Revision 3				
Legend Text : B = Program Back-up C = Calibrate F = Function Test H = Overhaul I = Inspect L = Lubricate M = Strategy Plan P = Preventive Q = Check oil quality S = Service T = Stand-by condition check U = Running condition check V = Verify																					
Item	No.		Equipment No.	Maintenance Item Description	Unit	Minits.	Act. Type	SA	TH	MO	APR	MAY	JUN	AUG	SEP	OCT	NOV	Dec	Remarks	Notes	
1.463	000	314	34C201	DOO-RW3403191A	RD	Calibration of PSV3400101A	1Y	INT											RRE-WMS	103607	131308
1.464	000	311	31D101	DOO-PT3100101	VERIF	PRESS., TRANS., PT3100101	1Y	INT	I										RRE-WMS	200824	282972
1.465	000	311	31K001	DOO-PT3100302	INSPECT	PRESS., TRANS., PT3100302	1Y	INT									I		RRE-WMS	201091	282399
1.466	000	331	33K001	DOO-PT3100303	INSPECT	PRESS., TRANS., PT3100303	1Y	INT	I										RRE-WMS	200821	282968
1.467	000	311	31C001	DOO-PT3100303	INSPECT	PRESS., TRANS., PT3100303	1Y	INT	I										RRE-WMS	200821	282970
1.468	000	311	31E001	DOO-PT3101208	INSPECT	PRESSURE TRANSMITTER PT3101208	1Y	INT					I						RRE-WMS	197519	198143
1.469	000	331	33C008	DOO-PT3101208	INSPECT	PRESSURE TRANSMITTER PT3101208	1Y	INT											RRE-WMS	167618	168142
1.470	000	311	31C001	DOO-PT3102104A	INSPECT	PRESS., TRANS., PT3102104A	1Y	INT											RRE-WMS	200530	282873
1.471	000	311	31C001	DOO-PT3102104B	INSPECT	PRESS., TRANS., PT3102104B	1Y	INT											RRE-WMS	200577	282926
1.472	000	311	31C001	DOO-PT3102104C	INSPECT	PRESS., TRANS., PT3102104C	1Y	INT											RRE-WMS	200578	282928
1.473	000	311	31E110	DOO-PT3103103	INSPECT	PRESSURE TRANSMITTER PT3103103	1Y	INT	I										RRE-WMS	152303	150373
1.474	000	331	33E110A	DOO-PT3103201	INSPECT	PRESSURE TRANSMITTER PT3103201	1Y	INT	I										RRE-WMS	167007	167077
1.475	000	311	31E110B	DOO-PT3103203	INSPECT	PRESSURE TRANSMITTER PT3103203	1Y	INT	I										RRE-WMS	152311	150381
1.476	000	311	31D112	DOO-PT3104701A	VERIFY	PRESS., TRANS., PT3104701A	1Y	INT						V					RRE-WMS	200705	282053
1.477	000	311	31K002	DOO-PT3104801	INSPECT	PRESS., TRANS., PT3104801	1Y	INT	I										RRE-WMS	200661	282009
1.478	000	311	31K002	DOO-PT3104805	INSPECT	PRESS., TRANS., PT3104805	1Y	INT	I										RRE-WMS	200662	282010
1.479	000	311	31C104	DOO-PT3105603	VERIFY	PRESS., TRANS., PT3105603	1Y	INT											RRE-WMS	200730	282078
1.480	000	311	31C105	DOO-PT3106401	VERIFY	PRESS., TRANS., PT3106401	1Y	INT						V					RRE-WMS	200488	282891
1.481	000	311	31D117	DOO-PT3106404	VERIFY	PRESS., TRANS., PT3106404	1Y	INT										V	RRE-WMS	200490	282702
1.482	000	311	31E109	DOO-PT3106701	VERIFY	PRESS., TRANS., PT3106701	1Y	INT											RRE-WMS	200583	282692
1.483	000	311	31D118	DOO-PT3106703	VERIFY	PRESS., TRANS., PT3106703	1Y	INT											RRE-WMS	200741	282938
1.484	000	311	31O031	DOO-PT3107463	VERIFY	PRESS., TRANS., PT3107463	1Y	INT									V	V	RRE-WMS	200620	282974
1.485	000	311	31E104	DOO-PT3111105	VERIFY	PRESS., TRANS., PT3111105	1Y	INT									V		RRE-WMS	200776	282924
1.486	000	311	31O146	DOO-PT3111201	INSPECT	PRESSURE TRANSMITTER PT3111201	1Y	INT								I			RRE-WMS	152915	150385
1.487	000	311	31O146	DOO-PT3111203	INSPECT	PRESSURE TRANSMITTER PT3111203	1Y	INT								I			RRE-WMS	152918	150386
1.488	000	331	33K001	DOO-PT3300101	INSPECT	PRESS., TRANS., PT3300101	1Y	INT								I			RRE-WMS	200666	282834
1.489	000	331	33K001	DOO-PT3300203	INSPECT	PRESS., TRANS., PT3300203	1Y	INT								I			RRE-WMS	200668	282834
1.490	000	331	33K002	DOO-PT3300302	INSPECT	PRESS., TRANS., PT3300302	1Y	INT								V			RRE-WMS	200700	282835
1.491	000	331	33K001	DOO-PT3300306	VERIFY	PRESS., TRANS., PT3300306	1Y	INT								V			RRE-WMS	200776	282926
1.492	000	331	33K001	DOO-PT3300306	VERIFY	PRESS., TRANS., PT3300306	1Y	INT											RRE-WMS	200780	282928
1.493	000	331	33K002A	DOO-PT3301501	INSPECT	PRESS., TRANS., PT3301501	1Y	INT									I		RRE-WMS	200785	282933
1.494	000	331	33K002B	DOO-PT3301502	INSPECT	PRESS., TRANS., PT3301502	1Y	INT											RRE-WMS	200784	282932
1.495	000	331	33K002B	DOO-PT3301500	INSPECT	PRESS., TRANS., PT3301500	1Y	INT											RRE-WMS	200783	282931
1.496	000	331	33K002A	DOO-PT3301508	INSPECT	PRESS., TRANS., PT3301508	1Y	INT											RRE-WMS	200772	282920

[illegible]

PREVENTIVE MAINTENANCE YEARLY SCHEDULE																				Form No.	
PLANT: DOO Year: 2023																				Effective Date: 09-11-2022	
																				Revision: 3	
Legend Text : B = Program Back-up C = Calibrate F = Function Test H = Overhaul I = Inspect L = Lubricate M = Strategy Plan P = Preventive Q = Check oil quality S = Service T = Stand-by condition check U = Running condition check V = Verify																					
Item	No.	Equipment No.	Maintenance Item Description	Unit	Minits	Act. Type	IN	TH	MO	APR	MAY	JUN	JUL	AUG	SEP	OCT	NOV	Dec	Remarks	Relay, P/N	Minits
1,735	DOO-011	AV1553/B	INSPEC,FUNCTION TEST V981050020	1Y	INT														RRG-RED	41303	42903
1,736	DOO-011	AV1553/A	INSPEC,FUNCTION TEST V98105301A	1Y	INT					F									RRG-RED	41304	42904
1,737	DOO-011	AV1553/A	INSPEC,FUNCTION TEST V98105301B	1Y	INT							F							RRG-RED	41305	42905
1,738	DOO-011	AV1553/B	INSPEC,FUNCTION TEST V98105302A	1Y	INT								F						RRG-RED	41306	42906
1,739	DOO-011	AV1553/B	INSPEC,FUNCTION TEST V98105302B	1Y	INT									F					RRG-RED	41307	42907
1,740	DOO-011	AV1553/B	INSPEC,FUNCTION TEST V98105301A	1Y	INT										F				RRG-RED	41308	42908
1,741	DOO-011	AV1553/B	INSPEC,FUNCTION TEST V981050101R	1Y	INT											F			RRG-RED	41309	42909
1,742	DOO-011	AV3100/401	AV3100/401-INSPECTION SHUT-OFF VALVE	1Y	INS							I							RRG-RED	258361	157815
1,743	DOO-011	AV3100/401	AV3100/401-INSPECTION SHUT-OFF VALVE	1Y	INS								I						RRG-RED	258370	157816
1,744	DOO-011	AV3100/402	AV3100/402-INSPECTION SHUT-OFF VALVE	1Y	INS									I					RRG-RED	258402	157838
1,745	DOO-011	AV3100/11	AV3100/11-INSPECTION SHUT-OFF VALVE	1Y	INS										I				RRG-RED	261175	204368
1,746	DOO-011	AV3100/161	AV3100/161-INSPECTION SHUT-OFF VALVE	1Y	INS											I			RRG-RED	259390	157909
1,747	DOO-011	AV3101/602	AV3101/602-INSPECTION SHUT-OFF VALVE	1Y	INS												I		RRG-RED	259390	157910
1,748	DOO-011	AV3102/292	AV3102/292-INSPECTION SHUT-OFF VALVE	1Y	INS														RRG-RED	259403	157937
1,749	DOO-011	AV3102/69	INSPECT CONTROL VALVE AV3102/69	9M	INT			I	I	I	I	I	I	I	I	I	I	I	RRG-RED	152005	162094
1,750	DOO-011	AV3106/203	INSPECT CONTROL VALVE AV3106/203	9M	INT			I	I	I	I	I	I	I	I	I	I	I	RRG-RED	152005	162096
1,751	DOO-011	AV3305/502	AV3305/502-INSPECTION SHUT-OFF VALVE	1Y	INS														RRG-RED	158413	157847
1,752	DOO-011	AV3308/801	AV3308/801-INSPECTION SHUT-OFF VALVE	1Y	INS														RRG-RED	158408	157842
1,753	DOO-011	AV3302/301	AV3302/301-INSPECTION SHUT-OFF VALVE	1Y	INS														RRG-RED	158414	157848
1,754	DOO-011	AV3302/10402	AV3302/10402-INSPECTION SHUT-OFF VALVE	9M	INT			F	F	F	F	F	F	F	F	F	F	F	RRG-RED	41527	42647
1,755	DOO-011	AV3302/10401	INSPEC,FUNCTION TEST SOLDIRED AV3304001	9M	INT			F	F	F	F	F	F	F	F	F	F	F	RRG-RED	41653	41653
1,756	DOO-011	AV3302/10401	INSPEC,FUNCTION TEST SOLDIRED AV3304001	9M	INT			F	F	F	F	F	F	F	F	F	F	F	RRG-RED	41664	41664
1,757	DOO-011	AV3300/301	INSPEC,FUNCTION TEST SOLDIRED AV3300301	9M	INT							F					F	F	RRG-RED	157766	168437
1,758	DOO-011	AV3300/201	INSPEC,FUNCTION TEST SOLDIRED AV3300201	9M	INT			F	F	F	F	F	F	F	F	F	F	F	RRG-RED	157768	168439
1,759	DOO-011	AV3300/301	INSPEC,FUNCTION TEST SOLDIRED AV3300301	9M	INT			F	F	F	F	F	F	F	F	F	F	F	RRG-RED	42121	431721
1,760	DOO-011	AV3300/201	INSPEC,FUNCTION TEST SOLDIRED AV3300201	9M	INT														RRG-RED	42121	431720
1,761	DOO-011	AV3304002	INSPEC,FUNCTION TEST SOLDIRED AV3304002	6M	INT												F	F	RRG-RED	157770	168443
1,762	DOO-011	Z58102101	Z58102101-INSPECTION PROXIMITY SWITCH	1Y	INS														RRG-RED	258261	157793
1,763	DOO-011	AV3304001	Z58106401-INSPECTION PROXIMITY SWITCH	1Y	INS														RRG-RED	258259	157793
1,764	DOO-011	AV3304001	Z58106401-INSPECTION PROXIMITY SWITCH	1Y	INS														RRG-RED	258261	157796
1,765	DOO-011	Z5810401	Z5810401-INSPECTION PROXIMITY SWITCH	1Y	INS													I	RRG-RED	258486	157920
1,766	DOO-011	Z5810401	Z5810401-INSPECTION PROXIMITY SWITCH	1Y	INS														RRG-RED	258486	157922
1,767	DOO-011	AV33102101	Z58102101-INSPECTION PROXIMITY SWITCH	1Y	INS														RRG-RED	258363	157797
1,768	DOO-011	Z581316401	Z581316401-INSPECTION PROXIMITY SWITCH	1Y	INS														RRG-RED	258365	157799

PREVENTIVE MAINTENANCE YEARLY SCHEDULE																				Form No.			
PLANT : DCC Year: 2023																				Effective Date 09.11.2022			
																				Revision 3			
Legend Text : B = Program Backup- C = Calibrate F = Function Test H = Overhaul I = Inspect L = Lubricate M = Strategy Plan P = Preventive Q = Check oil quality S = Service T = Stand-by condition check V = Running condition check Y = Verify																							
Item	Sr.No.	Equipment No.	Maintenance Item Description	Cycle	Units	Acty.Type	AS	BS	CS	DS	ES	FS	GS	HS	IS	LS	MS	NF	Other	Remarks	Min.Plan	Maintenance	
1.667	DCC -33	-33R001B	DCC-TT330081BA	TT330081BA-INSPECTION TEMP.,TRANS.& PROBE	1Y	INS												I		RSS-RHD	128452	157886	
1.668	DCC -33	-33R001B	DCC-TT330081BB	TT330081BB-INSPECTION TEMP.,TRANS.& PROBE	1Y	INS												I		RSS-RHD	128453	157887	
1.669	DCC -33	-33R001B	DCC-TT330081BA	TT330081BA-INSPECTION TEMP.,TRANS.& PROBE	1Y	INS												I		RSS-RHD	128454	157888	
1.670	DCC -33	-33R001B	DCC-TT330081BB	TT330081BB-INSPECTION TEMP.,TRANS.& PROBE	1Y	INS												I		RSS-RHD	128455	157889	
1.671	DCC -33	-33R002A	DCC-TT330082CA	TT330082CA-INSPECTION TEMP.,TRANS.& PROBE	1Y	INS												I		RSS-RHD	128456	157890	
1.672	DCC -33	-33R002B	DCC-TT330082CB	TT330082CB-INSPECTION TEMP.,TRANS.& PROBE	1Y	INS												I		RSS-RHD	128458	157892	
1.673	DCC -33	-33R002A	DCC-TT330082CA	TT330082CA-INSPECTION TEMP.,TRANS.& PROBE	1Y	INS												I		RSS-RHD	128460	157894	
1.674	DCC -33	-33R002B	DCC-TT330082CB	TT330082CB-INSPECTION TEMP.,TRANS.& PROBE	1Y	INS												I		RSS-RHD	128462	157896	
1.675	DCC -33	-33R002A	DCC-TT330082CA	TT330082CA-INSPECTION TEMP.,TRANS.& PROBE	1Y	INS												I		RSS-RHD	128464	157898	
1.676	DCC -33	-33R002B	DCC-TT330082CB	TT330082CB-INSPECTION TEMP.,TRANS.& PROBE	1Y	INS												I		RSS-RHD	128468	157900	
1.677	DCC -33	-33R002A	DCC-TT330082CA	TT330082CA-INSPECTION TEMP.,TRANS.& PROBE	1Y	INS												I		RSS-RHD	128466	157902	
1.678	DCC -33	-33R002B	DCC-TT330082DB	TT330082DB-INSPECTION TEMP.,TRANS.& PROBE	1Y	INS												I		RSS-RHD	128468	157904	
1.679	DCC -33	-33R002A	DCC-TT330082CA	TT330082CA-INSPECTION TEMP.,TRANS.& PROBE	1Y	INS												I		RSS-RHD	128472	157906	
1.680	DCC -33	-33R002B	DCC-TT330082DB	TT330082DB-INSPECTION TEMP.,TRANS.& PROBE	1Y	INS												I		RSS-RHD	128474	157908	
1.681	DCC -33	-33R002A	DCC-TT330082CA	TT330082CA-INSPECTION TEMP.,TRANS.& PROBE	1Y	INS												I		RSS-RHD	128476	157910	
1.682	DCC -33	-33R002B	DCC-TT330082DB	TT330082DB-INSPECTION TEMP.,TRANS.& PROBE	1Y	INS												I		RSS-RHD	128478	157912	
1.683	DCC -33	-33R002A	DCC-TT330082CA	TT330082CA-INSPECTION TEMP.,TRANS.& PROBE	1Y	INS												I		RSS-RHD	128480	157914	
1.684	DCC -33	-33R002B	DCC-TT330082DB	TT330082DB-INSPECTION TEMP.,TRANS.& PROBE	1Y	INS												I		RSS-RHD	128482	157916	
1.685	DCC -33	-33R002B	DCC-TT330082BT	TT330082BT-INSPECTION TEMP.,TRANS.& PROBE	1Y	INS												I		RSS-RHD	128484	157918	
1.686	DCC -33	-33R002B	DCC-TT330114BT	TT330114BT-INSPECTION TEMP.,TRANS.& PROBE	1Y	INS												I		RSS-RHD	250871	250880	
1.687	DCC -33	-33R002A	DCC-TT330151FA	TT330151FA-INSPECTION TEMP.,TRANS.	1Y	NF														RSS-RHD	250875	250884	
1.688	DCC -33	-33R002A	DCC-TT330156Z	TT330156Z-INSPECTION TEMP.,TRANS.	1Y	NF														RSS-RHD	250876	250893	
1.689	DCC -33	-33R002B	DCC-TT330156B	TT330156B-INSPECTION TEMP.,TRANS.	1Y	NF												I		RSS-RHD	250872	250920	
1.690	DCC -33	-33R002B	DCC-TT330156B	TT330156B-INSPECTION TEMP.,TRANS.	1Y	INS												I		RSS-RHD	250873	250932	
1.691	DCC -33	-33R002	DCC-TT330201	TT330201-INSPECTION TEMP.,TRANS.& PROBE	1Y	INS				I										RSS-RHD	201768	208280	
1.692	DCC -33	-33R002	DCC-TT330202	TT330202-INSPECTION TEMP.,TRANS.	1Y	INS													I	RSS-RHD	250877	250886	
1.693	DCC -34	-34C001	DCC-TT3400103	TT3400103-INSPECTION TEMP.,TRANS.	1Y	NF												I		RSS-RHD	250887	282316	
1.694	DCC -34	-34C002	DCC-TT3400104	TT3400104-INSPECTION TEMP.,TRANS.	1Y	NF												I		RSS-RHD	250878	282307	
1.695	DCC -34	-34C001	DCC-TT3400202	TT3400202-VERIFY TEMP.,TRANS.	1Y	NF													V		RSS-RHD	250885	250895
1.696	DCC -34	-34C002	DCC-TT3400205	TT3400205-INSPECTION TEMP.,TRANS.	1Y	NF													I	RSS-RHD	250879	282308	
1.697	DCC -34	-34C001	DCC-TT3400507	TT3400507-INSPECTION TEMP.,TRANS.	1Y	NF													I	RSS-RHD	250880	282309	
1.698	DCC -31	-31WALVE	DCC-TV3100501	TV3100501-INSPECTION SLIDE VALVE	1Y	INS			I											RSS-RHD	123555	157789	
1.699	DCC -31	-31WALVE	DCC-TV3100501	INSPECTION OF DCC-TV3100501	1Y	INS			I		I									RSS-RHD	99633	123879	
1.700	DCC -31	-TV3100501	DCC-TV3100501-LMS	STAND BY CONDITION CHECK OF TV3100501-LMS	6M	NT														RSS-RHD	28273	28275	

PREVENTIVE MAINTENANCE YEARLY SCHEDULE
PLANT : DCC YEAR: 2023

Form No.
Effective Date 09.11.2022
Revision 3

Legend Text : B = Program Back-up, C = Calibrate, F = Function Test, H = Overhaul, I = Inspect, L = Lubricate, M = Strategy Plan, P = Preventive, Q = Check oil quality
S = Service, T = Stand by condition check, U = Running condition check, V = Verify

Item	S.No.	Sp. part No.	Maintenance Item Description	Cycle	Maint. Act. Type	Jan	Feb	Mar	Apr	May	Jun	Jul	Aug	Sep	Oct	Nov	Dec	Work Order	Min. Plan	Maintenance
1,769	DCC -31 -CV	DCC-ZS3160701	ZS3160701-INSPECTION PROXIMITY SWITCH	1Y	INS	I												REC-RED	128367	157691
1,770	DCC -31 -LV3100501	DCC-ZT3100501	INSPCT.FEED BACK POSITION ZT3100501	1Y	INT									I				REC-RED	206602	283000
1,771	DCC -31 -TV3100501	DCC-ZT3100502	INSPCT.FEED BACK POSITION ZT3100502	1Y	INT									I				REC-RED	206605	283003
1,772	DCC -31 -31P0318	DCC31P0318-P01	INSPECTION OF DCC-31P0318	6M	INT					I						I		RR-RED	77640	95210
1,773	DCC -E18	E18	PARTIAL DISCHARGE SIGNAL MEASURING	12M	INT				I									CD-WPL	45335	106144
1,774	DCC -E18-CHARGER110	E18-CH0110	INSPECT BATTERY CHARGER DCC -E18-CH0110	6M	INT											I		CD-LPS	106475	132259
1,775	DCC -E18-CHARGER110	E18-CH0110	RM BATTERY CHARGER DCC -E18-CH0110	1Y	INT								P					CD-LPS	98505	120670
1,776	DCC -E18-CHARGER204	E18-CH0204	INSPECT BATTERY CHARGER DCC -E18-CH0204	6M	INT				I							I		CD-LPS	106476	132260
1,777	DCC -E18-CHARGER204	E18-CH0204	RM BATTERY CHARGER DCC -E18-CH0204	1Y	INT								P					CD-LPS	98505	120672
1,778	DCC -E18-CHARGER110	E18-CH0110	INSPECT BATTERY CHARGER DCC -E18-CH0110	6M	INT				I							I		CD-LPS	106477	132261
1,779	DCC -E18-CHARGER110	E18-CH0110	RM BATTERY CHARGER DCC -E18-CH0110	1Y	INT								P					CD-LPS	98505	120669
1,780	DCC -E18-CHARGER204	E18-CH0204	INSPECT BATTERY CHARGER DCC -E18-CH0204	6M	INT				I							I		CD-LPS	106478	132262
1,781	DCC -E18-MCC3A1	E18-MCC3A1-0AP	RM LV CAPACITOR DCC-E18-MCC3A1-0AP	1M	INT	I	I	I	I	I	I	I	I	I	I	I	I	RSE-RED	77114	93550
1,782	DCC -E18-MCC3A2	E18-MCC3A2-0AP	RM LV CAPACITOR DCC-E18-MCC3A2-0AP	1M	INT	I	I	I	I	I	I	I	I	I	I	I	I	REC-RED	28340	28340
1,783	DCC -E18-MCC3A3	E18-MCC3A3-0AP	RM LV CAPACITOR DCC-E18-MCC3A3 -0AP	1M	INT	I	I	I	I	I	I	I	I	I	I	I	I	REC-RED	28341	28341
1,784	DCC -E18-MCC3B1	E18-MCC3B1-0AP	RM LV CAPACITOR DCC-E18-MCC3B1-0AP	1M	INT	I	I	I	I	I	I	I	I	I	I	I	I	REC-RED	28342	28342
1,785	DCC -E18-MCC3B2	E18-MCC3B2-0AP	RM LV CAPACITOR DCC-E18-MCC3B2-0AP	1M	INT	I	I	I	I	I	I	I	I	I	I	I	I	REC-RED	28343	28343
1,786	DCC -E18-MCC3B3	E18-MCC3B3-0AP	RM LV CAPACITOR DCC-E18-MCC3B3-0AP	1M	INT	I	I	I	I	I	I	I	I	I	I	I	I	REC-RED	28344	28344
1,787	DCC -E18-MCC3C1	E18-MCC3C1-0AP	RM LV CAPACITOR DCC -E18-MCC3C1-0AP	1M	INT	I	I	I	I	I	I	I	I	I	I	I	I	REC-RED	28344	134443
1,788	DCC -31 -31K0003	E18-SDT31K003	INSPECT S&T-31K003 DCC -E18-SDT31K003	3M	INT	I			I									CD-WSD	110140	137885
1,789	DCC -E18-TR	E18-TR-1A	VISUAL INSPECTION TRANSFORMER OF TR_1A	2W	INT	I	I	I	I	I	I	I	I	I	I	I	I	REC-RED	84804	110339
1,790	DCC -E18-TR	E18-TR-1B	VISUAL INSPECTION TRANSFORMER OF TR_1B	2W	INT	I	I	I	I	I	I	I	I	I	I	I	I	REC-RED	84804	110340
1,791	DCC -E18-TR	E18-TR-1D	OIL ANALYSIS (COA-DIELEC.IFT-ACID-NCES)	1Y	INT				P									CD-TRIL	205587	297572
1,792	DCC -E18-TR	E18-TR-1D	VISUAL INSPECTION TRANSFORMER OF TR_1D	2W	INT	I	I	I	I	I	I	I	I	I	I	I	I	REC-RED	84804	273870
1,793	DCC -E18-TR	E18-TR-2A	VISUAL INSPECTION TRANSFORMER OF TR_2A	2W	INT	I	I	I	I	I	I	I	I	I	I	I	I	REC-RED	84804	110341
1,794	DCC -E18-TR	E18-TR-2B	VISUAL INSPECTION TRANSFORMER OF TR_2B	2W	INT	I	I	I	I	I	I	I	I	I	I	I	I	REC-RED	84804	110342
1,795	DCC -E18-TR	E18-TR-2C	VISUAL INSPECTION TRANSFORMER OF TR_2C	2W	INT	I	I	I	I	I	I	I	I	I	I	I	I	REC-RED	84804	110343
1,796	DCC -E18-TR	E18-TR-2D	VISUAL INSPECTION TRANSFORMER OF TR_2D	2W	INT	I	I	I	I	I	I	I	I	I	I	I	I	REC-RED	84804	110344
1,797	DCC -E18-TR	E18-TR-2E	VISUAL INSPECTION TRANSFORMER OF TR_2E	2W	INT	I	I	I	I	I	I	I	I	I	I	I	I	REC-RED	84804	110345
1,798	DCC -E18-TR	E18-TR-WD	OIL ANALYSIS (COA-DIELEC.IFT-ACID-NCES)	12M	INT				Q									CD-TRIL	85476	106285
1,799	DCC -E18-TR	E18-TR-WD	VISUAL INSPECTION TRANSFORMER OF TR_1C	2W	INT	I	I	I	I	I	I	I	I	I	I	I	I	REC-RED	84804	110346
1,800	DCC -E18-LPS	E18-LPS100	INSPECT LPS DCC -E18-LPS100	6M	INT				I								I	CD-LPS	106479	132263
1,801	DCC -E18-LPS	E18-LPS100	RM LPS DCC -E18-LPS100	1Y	INT									P				CD-LPS	98505	120673
1,802	DCC -E18-LPS	E18-LPS200	INSPECT LPS DCC -E18-LPS200	6M	INT				I								I	CD-LPS	106480	132264

PREVENTIVE MAINTENANCE YEARLY SCHEDULE
PLANT : DCC YEAR: 2023

Form No.
Effective Date 09.11.2022
Revision 3

Legend Text : B = Program Back-up, C = Calibrate, F = Function Test, H = Overhaul, I = Inspect, L = Lubricate, M = Strategy Plan, P = Preventive, Q = Check oil quality
S = Service, T = Stand by condition check, U = Running condition check, V = Verify

Item	S.No.	Sp. part No.	Maintenance Item Description	Cycle	Maint. Act. Type	Jan	Feb	Mar	Apr	May	Jun	Jul	Aug	Sep	Oct	Nov	Dec	Work Order	Min. Plan	Maintenance
1,803	DCC -E18-LPS	E18-LPS200	RM LPS DCC -E18-LPS200	1Y	INT													CD-LPS	98505	120674
1,804	DCC -31 -31K034B	E18-WSD-31K034B	Inspect VSD DCC -E18-AC31K034B	3M	INT			I			I			I				REC-RED	110138	137883
1,805	DCC -31 -31K0002	E18-WSD-31K002-1	Inspect VSD DCC -E18-AC31K002	3M	INT			I			I			I				CD-WSD	110139	137884
1,806	DCC -31 -31K0002	E18-WSD-31K002-4M1	RUNNING CONDITION CHECK DCC-E18-VPD4M1A	1M	INT	U	U	U	U	U	U	U	U	U	U	U	U	REC-RED	28356	28356
1,807	DCC -31 -31K0002	E18-WSD-31K002-4M3	RUNNING CONDITION CHECK DCC-E18-VPD4M1B	1M	INT	U	U	U	U	U	U	U	U	U	U	U	U	REC-RED	83257	103969
1,808		E18-7052	WATER SPRAY INSULATOR 110KV OUTDOOR YARD	12M	INT						P							20-WTRIL	85485	106294
1,809	DCC -E18-110KVLAIS	E18-H-WRT3A	OIL ANALYSIS (COA-DIELEC.IFT-ACID-NCES)	6M	INT		Q						Q					CD-TRIL	85494	106303

Form No.

Effective Date 09.11.2022

Revision 3

Legend Text : B = Program Back-up C = Calibrate F = Function Test H = Overhaul I = Inspect L = Lubricate M = Strategy Plan P = Preventive Q = Check oil quality
S = Service T = Stand by condition check U = Running condition check V = Verify

[illegible]

Form No. _____

Effective Date 09.11.2022

Revision 3

Legend Text : B = Program Back-up C = Calibrate F = Function Test H = Overhaul I = Inspect L = Lubricate M = Strategy Plan P = Preventive Q = Check oil quality
S = Service T = Stand by condition check U = Running condition check V = Verify

[illegible]

Form No.
Effective Date 09.11.2022
Revision 3

Legend Text : B = Program Back-up C = Calibrate F = Function Test H = Overhaul I = Inspect L = Lubricate M = Strategy Plan P = Preventive Q = Check oil quality
S = Service T = Stand by condition check U = Running condition check V = Verify

Item	Lot No.	Equipment No.	Maintenance Item Description	Syst	Monr1_Acyl_Tyds	AS	IR	CR	PS	ES	LS	MS	MR	SR	CS	CE	CC	CC Control	Obs. Plan	Maintance
205	VGM-63 -PIPING	2-VL-0300111	Piping Inspection (Class2)	SV	INT										I			IRI-INR	241933	273502
206	VGM-63 -PIPING	2-VL-0300112	Piping Inspection (Class2)	SV	INT										I			IRI-INR	241934	273503
207	VGM-63 -PIPING	2-VL-0300119	Piping Inspection (Class2)	SV	INT										I			IRI-INR	241940	273509
208	VGM-63 -PIPING	2-VL-0300120	Piping Inspection (Class2)	SV	INT										I			IRI-INR	241941	273510
209	VGM-63 -PIPING	2-VL-0300121	Piping Inspection (Class2)	SV	INT										I			IRI-INR	241942	273511
210	VGM-63 -PIPING	2-VL-0300122	Piping Inspection (Class2)	SV	INT										I			IRI-INR	241943	273512
211	VGM-63 -PIPING	2-VL-0300110	Piping Inspection (Class2)	SV	INT										I			IRI-INR	241963	273532
212	VGM-36 -PIPING	2-VLA-3000025	Piping Inspection (Class2)	SV	INT										I			IRI-INR	243360	246571
213	VGM-36 -PIPING	2-VLA-3000026	Piping Inspection (Class2)	SV	INT										I			IRI-INR	240021	222490
214	VGM-36 -PIPING	2-VLA-3000022	Piping Inspection (Class2)	SV	INT									I				IRI-INR	240035	222494
215	VGM-36 -PIPING	2-VLA-3000033	Piping Inspection (Class2)	SV	INT									I				IRI-INR	240404	222509
216	VGM-36 -PIPING	2-VLA-3000030	Piping Inspection (Class2)	SV	INT										I			IRI-INR	241962	273531
217	VGM-36 -PIPING	2-VLA-3000044	Piping Inspection (Class2)	SV	INT										I			IRI-INR	241568	273195
218	VGM-36 -PIPING	2-VLA-3000045	Piping Inspection (Class2)	SV	INT										I			IRI-INR	241567	273338
219	VGM-32 -PIPING	2-VLA-3000043	Piping Inspection (Class2)	SV	INT										I			IRI-INR	241574	273143
220	VGM-32 -PIPING	2-VLA-3210012	Piping Inspection (Class2)	SV	INT										I			IRI-INR	241582	273315
221	VGM-32 -PIPING	2-VLA-3210016	Piping Inspection (Class2)	SV	INT										I			IRI-INR	241583	273312
222	VGM-32 -PIPING	2-VLA-3210017	Piping Inspection (Class2)	SV	INT										I			IRI-INR	241584	273313
223	VGM-32 -PIPING	2-VLA-3210019	Piping Inspection (Class2)	SV	INT										I			IRI-INR	241593	273362
224	VGM-37 -PIPING	2-VLA-3700017	Piping Inspection (Class2)	SV	INT										I			IRI-INR	241740	273315
225	VGM-37 -PIPING	2-VLA-3700020	Piping Inspection (Class2)	SV	INT										I			IRI-INR	241747	273316
226	VGM-36 -PIPING	2-VG-0300201	Piping Inspection (Class2)	SV	INT										I			IRI-INR	253361	246932
227	VGM-36 -PIPING	2-VG-0300201	Piping Inspection (Class2)	SV	INT										I			IRI-INR	253362	246933
228	VGM-36 -PIPING	2-VG-0300404	Piping Inspection (Class2)	SV	INT										I			IRI-INR	240337	246940
229	VGM-32 -PIPING	2-VLA-3200042	Piping Inspection (Class2)	SV	INT										I			IRI-INR	241004	273317
230	VGM-32 -PIPING	2-VLA-3210021	Piping Inspection (Class2)	SV	INT										I			IRI-INR	241007	273378
231	VGM-36 -PIPING	2-VLA-3008003	Piping Inspection (Class2)	SV	INT										I			IRI-INR	233667	246479
232	VGM-36 -PIPING	2-VLA-3008008	Piping Inspection (Class2)	SV	INT										I			IRI-INR	233668	246479
233	VGM-32 -PIPING	2-VLA-3210035	Piping Inspection (Class4L)	10Y	INT										I			IRI-INR	241876	273245
234	VGM-32 -PIPING	2-VLA-3207008	Piping Inspection (Class4L)	10Y	INT										I			IRI-INR	242399	265170
235	VGM-37 -PIPING	2-VLA-3711012	Piping Inspection (Class4L)	10Y	INT										I			IRI-INR	241838	273407
236	VGM-37 -PIPING	2-VLA-3712008	Piping Inspection (Class4L)	10Y	INT										I			IRI-INR	233822	266993
237	VGM-37 -PIPING	2-VLA-3712013	Piping Inspection (Class4L)	10Y	INT										I			IRI-INR	241839	273408
238	VGM-63 -PIPING	2-VL-03-032405-A15	Piping Inspection (Class2)	SV	INT										I			IRI-INR	242403	273612

Form No.
Effective Date 09.11.2022
Revision 3

Legend Text : B = Program Back-up C = Calibrate F = Function Test H = Overhaul I = Inspect L = Lubricate M = Strategy Plan P = Preventive Q = Check oil quality
S = Service T = Stand by condition check U = Running condition check V = Verify

Item	ID No.	Equipment No.	Maintenance Task Description	Cycle	Units	Act.	Type	10	15	20	25	30	35	40	45	50	55	60	65	70	75	80	85	90	95	100	Units	Price	Maintenance
137	V04-02	PPHFG	112-CL-320784	Piping Inspection (Class2)	5Y	INT																					141-INT	24148	27358
138	V04-02	PPHFG	112-CL-320930	Piping Inspection (Class4)	5Y	INT																					141-INT	26187	27326
139	V04-02	PPHFG	101D-3207701	Piping inspection critical line	6M	INT																					141-INT	26723	27930
140	V04-02	PPHFG	10-02-3014016	Piping Inspection (Class2)	5Y	INT																					141-INT	26061	27930
141	V04-02	PPHFG	10-CL-321006	Piping Inspection (Class2)	5Y	INT																					141-INT	24154	27312
142	V04-02	PPHFG	10-FA-0044001	Piping Inspection (Class2)	5Y	INT																					141-INT	23351	26450
143	V04-02	PPHFG	10-FA-3705018	Piping Inspection (Class2)	5Y	INT																					141-INT	24162	27331
144	V04-02	PPHFG	10-FA-3705019	Piping Inspection (Class2)	5Y	INT																					141-INT	24174	27332
145	V04-02	PPHFG	10-CL-0010006	Piping Inspection (Class4)	5Y	INT																					141-INT	23343	26504
146	V04-02	PPHFG	10-CL-001008	Piping Inspection (Class4)	5Y	INT																					141-INT	23348	26509
147	V04-02	PPHFG	10-FA-0027001	Piping Inspection (Class4)	10Y	INT																					141-INT	23353	26450
148	V04-02	PPHFG	10-FA-0020011	Piping Inspection (Class4)	10Y	INT																					141-INT	23352	26504
149	V04-02	PPHFG	10-FA-3215082	Piping Inspection (Class4)	10Y	INT																					141-INT	26710	27270
150	V04-02	PPHFG	10-FA-3720015	Piping Inspection (Class4)	10Y	INT																					141-INT	24164	27313
151	V04-02	PPHFG	10-FA-3711009	Piping Inspection (Class4)	10Y	INT																					141-INT	24165	27314
152	V04-02	PPHFG	10-FA-0022011	Piping Inspection (Class4)	10Y	INT																					141-INT	23349	26510
153	V04-02	PPHFG	10-FA-0034004	Piping Inspection (Class4)	10Y	INT																					141-INT	23350	26521
154	V04-02	PPHFG	10-FA-2434019	Piping Inspection (Class4)	10Y	INT																					141-INT	23355	26518
155	V04-02	PPHFG	10-FA-3215004	Piping Inspection (Class4)	10Y	INT																					141-INT	24172	27324
156	V04-02	PPHFG	10-FA-3708014	Piping Inspection (Class4)	10Y	INT																					141-INT	24180	27319
157	V04-02	PPHFG	10-FA-3711006	Piping Inspection (Class4)	10Y	INT																					141-INT	24155	27320
158	V04-02	PPHFG	12-FA-3030	Piping Inspection (Class2)	5Y	INT																					141-INT	26993	27292
159	V04-02	PPHFG	12-FA-3706007	Piping Inspection (Class2)	5Y	INT																					141-INT	24174	27333
160	V04-02	PPHFG	12-FA-3711001	Piping Inspection (Class2)	5Y	INT																					141-INT	24174	27333
161	V04-02	PPHFG	14-FA-3014009	Piping Inspection (Class2)	5Y	INT																					141-INT	25095	27252
162	V04-02	PPHFG	14-03-02003	Piping Inspection (Class2)	5Y	INT																					141-INT	26973	27242
163	V04-02	PPHFG	16-02-3014001	Piping Inspection (Class2)	5Y	INT																					141-INT	25089	27428
164	V04-02	PPHFG	16-03-3215006	Piping Inspection (Class2)	5Y	INT																					141-INT	25100	27286
165	V04-02	PPHFG	16-03-326801	Piping Inspection (Class2)	5Y	INT																					141-INT	24404	27273
166	V04-02	PPHFG	16-FA-0044010	Piping Inspection (Class2)	5Y	INT																					141-INT	23352	26450
167	V04-02	PPHFG	16-FA-3270003	Piping Inspection (Class2)	5Y	INT																					141-INT	24159	27368
168	V04-02	PPHFG	16-FA-3270009	Piping Inspection (Class2)	5Y	INT																					141-INT	24100	27369
169	V04-02	PPHFG	2-CA-3219005	Piping Inspection (Class2)	5Y	INT																					141-INT	24036	27497
170	V04-02	PPHFG	2-CL-3008011	Piping Inspection (Class2)	5Y	INT																					141-INT	24052	27421

Form No.
Effective Date 09.11.2022
Revision 3

Legend : B = Program Back-up C = Calibrate F = Function Test H = Overhaul I = Inspect L = Lubricate M = Strategy Plan P = Preventive Q = Check oil quality
S = Service T = Stand by condition check U = Running condition check V = Verify

[illegible]

Form No.
Effective Date 09.11.2022
Revision 3

Legend Text : B = Program Back-up C = Calibrate F = Function Test H = Overhaul I = Inspect L = Lubricate M = Strategy Plan P = Preventive Q = Check oil quality
S = Service T = Stand by condition check U = Running condition check V = Verify

[illegible]

PREVENTIVE MAINTENANCE YEARLY SCHEDULE
PLANT : VCDH YEAR : 2023

Form No.
Effective Date 09.11.2022
Revision 3

Legend Text : B = Program Back-up; C = Calibrate; F = Function Test; H = Overhaul; I = Inspect; L = Lubricate; M = Strategy Plan; P = Preventive; Q = Check oil quality
S = Service; T = Stand by condition check; U = Running condition check; V = Verify

Item	S.No.	Equipment No.	Maintenance Item Description	Cycle	Minut.	Act.	Type	Jan	Feb	Mar	Apr	May	Jun	Jul	Aug	Sep	Oct	Nov	Dec	Work Center	Minut. Plan	Maintenance
341	VGDH-03 -PIPING	3/4-SL-2014104	Piping Inspection (Class4)	SV	INT						I									IRI-INE	240785	272354
342	VGDH-03 -PIPING	3/4-SL-2014108	Piping Inspection (Class4)	SV	INT						I									IRI-INE	240785	272355
343	VGDH-03 -PIPING	3/4-4094-3001032	Piping Inspection (Class2)	SV	INT								I							IRI-INE	241282	272551
344	VGDH-03 -PIPING	4-ATB-0301181	Piping Inspection (Class3)	SV	INT												I			IRI-INE	241667	273436
345	VGDH-03 -PIPING	4-ATB-0301182	Piping Inspection (Class3)	SV	INT												I			IRI-INE	241668	273437
346	VGDH-03 -PIPING	4-QD-3201908	Piping Inspection (Class2)	SV	INT								I							IRI-INE	241343	272912
347	VGDH-03 -PIPING	4-QD-3201940	Piping Inspection (Class2)	SV	INT								I							IRI-INE	241345	272914
348	VGDH-03 -PIPING	4-QD-3201948	Piping Inspection (Class2)	SV	INT								I							IRI-INE	241346	272915
349	VGDH-03 -PIPING	4-QD-3200902	Piping Inspection (Class2)	SV	INT									I						IRI-INE	241347	272916
350	VGDH-03 -PIPING	4-QD-3200949	Piping Inspection (Class2)	SV	INT									I						IRI-INE	241352	272921
351	VGDH-03 -PIPING	4-QD-3210044	Piping Inspection (Class2)	SV	INT							I								IRI-INE	241378	272947
352	VGDH-03 -PIPING	4-QD-3210015	Piping Inspection (Class2)	SV	INT								I							IRI-INE	241379	272948
353	VGDH-03 -PIPING	4-QD-3210020	Piping Inspection (Class2)	SV	INT							I								IRI-INE	241380	272949
354	VGDH-03 -PIPING	4-QD-3210021	Piping Inspection (Class2)	SV	INT							I								IRI-INE	241381	272950
355	VGDH-03 -PIPING	4-QD-3210029	Piping Inspection (Class2)	SV	INT									I						IRI-INE	241383	272952
356	VGDH-03 -PIPING	4-QD-3210036	Piping Inspection (Class2)	SV	INT								I							IRI-INE	241388	272957
357	VGDH-03 -PIPING	4-QD-3210033	Piping Inspection (Class2)	SV	INT								I							IRI-INE	241389	272968
358	VGDH-03 -PIPING	4-QD-3210035	Piping Inspection (Class2)	SV	INT									I						IRI-INE	241402	272971
359	VGDH-03 -PIPING	4-QD-3210023	Piping Inspection (Class2)	SV	INT								I							IRI-INE	240963	272452
360	VGDH-03 -PIPING	4-QD-3217001	Piping Inspection (Class2)	SV	INT							I								IRI-INE	240968	273456
361	VGDH-03 -PIPING	4-QD-3217003	Piping Inspection (Class2)	SV	INT							I								IRI-INE	240969	273458
362	VGDH-03 -PIPING	4-QD-3217020	Piping Inspection (Class2)	SV	INT								I							IRI-INE	240993	273462
363	VGDH-03 -PIPING	4-QD-3209101	Piping Inspection (Class2)	SV	INT									I						IRI-INE	241406	272975
364	VGDH-03 -PIPING	4-QD-3209121	Piping Inspection (Class2)	SV	INT									I						IRI-INE	241408	272977
365	VGDH-03 -PIPING	4-QD-3209136	Piping Inspection (Class2)	SV	INT									I						IRI-INE	241411	272980
366	VGDH-03 -PIPING	4-QD-3202039	Piping Inspection (Class2)	SV	INT									I						IRI-INE	241425	272994
367	VGDH-03 -PIPING	4-QD-3202092	Piping Inspection (Class2)	SV	INT									I						IRI-INE	241430	272999
368	VGDH-03 -PIPING	4-QD-3202056	Piping Inspection (Class2)	SV	INT										I					IRI-INE	241432	273001
369	VGDH-03 -PIPING	4-QD-3210016	Piping Inspection (Class2)	SV	INT									I						IRI-INE	241406	273074
370	VGDH-03 -PIPING	4-QD-3217006	Piping Inspection (Class2)	SV	INT										I					IRI-INE	241536	273107
371	VGDH-03 -PIPING	4-QD-3207004	Piping Inspection (Class2)	SV	INT									I						IRI-INE	241546	273115
372	VGDH-03 -PIPING	4-QD-6305101	Piping Inspection (Class2)	SV	INT											I				IRI-INE	241923	273492
373	VGDH-03 -PIPING	4-QD-6305102	Piping Inspection (Class2)	SV	INT											I				IRI-INE	241924	273493
374	VGDH-03 -PIPING	4-QD-6305103	Piping Inspection (Class2)	SV	INT												I			IRI-INE	241925	273494

PREVENTIVE MAINTENANCE YEARLY SCHEDULE
PLANT : VCDH YEAR : 2023

Form No.
Effective Date 09.11.2022
Revision 3

Legend Text : B = Program Back-up; C = Calibrate; F = Function Test; H = Overhaul; I = Inspect; L = Lubricate; M = Strategy Plan; P = Preventive; Q = Check oil quality
S = Service; T = Stand by condition check; U = Running condition check; V = Verify

Item	S.No.	Equipment No.	Maintenance Item Description	Cycle	Minut.	Act.	Type	Jan	Feb	Mar	Apr	May	Jun	Jul	Aug	Sep	Oct	Nov	Dec	Work Center	Minut. Plan	Maintenance
375	VGDH-03 -PIPING	4-QD-6305104	Piping Inspection (Class2)	SV	INT													I		IRI-INE	241926	273496
376	VGDH-03 -PIPING	4-QD-6305115	Piping Inspection (Class2)	SV	INT													I		IRI-INE	241937	273508
377	VGDH-03 -PIPING	4-QD-6305123	Piping Inspection (Class2)	SV	INT													I		IRI-INE	241944	273513
378	VGDH-03 -PIPING	4-QD-6305124	Piping Inspection (Class2)	SV	INT													I		IRI-INE	241945	273514
379	VGDH-03 -PIPING	4-QD-6305125	Piping Inspection (Class2)	SV	INT													I		IRI-INE	241946	273515
380	VGDH-03 -PIPING	4-QD-6305126	Piping Inspection (Class2)	SV	INT													I		IRI-INE	241947	273516
381	VGDH-03 -PIPING	4-QD-6305127	Piping Inspection (Class2)	SV	INT													I		IRI-INE	241948	273517
382	VGDH-03 -PIPING	4-QD-6305130	Piping Inspection (Class2)	SV	INT													I		IRI-INE	241949	273518
383	VGDH-03 -PIPING	4-QD-6305103	Piping Inspection (Class2)	SV	INT								I							IRI-INE	240991	273475
384	VGDH-03 -PIPING	4-FA-3200912	Piping Inspection (Class2)	SV	INT									I						IRI-INE	240993	273472
385	VGDH-03 -PIPING	4-FA-3200912	Piping Inspection (Class2)	SV	INT									I						IRI-INE	240993	273492
386	VGDH-03 -PIPING	4-FA-3200912	Piping Inspection (Class2)	SV	INT									I						IRI-INE	240993	273498
387	VGDH-03 -PIPING	4-FA-3200917	Piping Inspection (Class2)	SV	INT								I							IRI-INE	240994	272503
388	VGDH-03 -PIPING	4-FA-3201919	Piping Inspection (Class2)	SV	INT									I						IRI-INE	240996	272527
389	VGDH-03 -PIPING	4-FA-3204007	Piping Inspection (Class2)	SV	INT										I					IRI-INE	240967	272536
390	VGDH-03 -PIPING	4-FA-3204341	Piping Inspection (Class2)	SV	INT											I				IRI-INE	241569	273138
391	VGDH-03 -PIPING	4-FA-3209406	Piping Inspection (Class2)	SV	INT												I			IRI-INE	241580	273149
392	VGDH-03 -PIPING	4-FA-3210016	Piping Inspection (Class2)	SV	INT												I			IRI-INE	241586	273165
393	VGDH-03 -PIPING	4-FA-3217001	Piping Inspection (Class2)	SV	INT												I			IRI-INE	241588	273167
394	VGDH-03 -PIPING	4-FA-3217003	Piping Inspection (Class2)	SV	INT												I			IRI-INE	241594	264906
395	VGDH-03 -PIPING	4-FA-3217001	Piping Inspection (Class2)	SV	INT												I			IRI-INE	241749	273318
396	VGDH-03 -PIPING	4-HO-0050006	Piping Inspection (Class2)	SV	INT								I							IRI-INE	233355	264908
397	VGDH-03 -PIPING	4-HO-0050008	Piping Inspection (Class2)	SV	INT								I							IRI-INE	233356	264907
398	VGDH-03 -PIPING	4-HO-0050004	Piping Inspection (Class2)	SV	INT									I						IRI-INE	240774	272343
399	VGDH-03 -PIPING	4-SL-3220004	Piping Inspection (Class4)	SV	INT								I							IRI-INE	233002	265173
400	VGDH-03 -PIPING	4-004-4302110	Piping Inspection (Class3)	SV	INT												I			IRI-INE	242756	273625
401	VGDH-03 -PIPING	4-004-3220004	Piping Inspection (Class4)	10Y	INT								I							IRI-INE	241715	273284
402	VGDH-03 -PIPING	4-004-3220001	Piping Inspection (Class4)	10Y	INT								I							IRI-INE	241716	273285
403	VGDH-03 -PIPING	4-004-3220003	Piping Inspection (Class4)	10Y	INT								I							IRI-INE	241726	273295
404	VGDH-03 -PIPING	4-004-3220002	Piping Inspection (Class4)	10Y	INT								I							IRI-INE	241727	273296
405	VGDH-03 -PIPING	4-QD-3200902	Piping Inspection (Class2)	SV	INT									I						IRI-INE	240961	272420
406	VGDH-03 -PIPING	4-QD-3014911	Piping Inspection (Class2)	SV	INT									I						IRI-INE	240660	272429
407	VGDH-03 -PIPING	4-QD-3010901	Piping Inspection (Class2)	SV	INT									I						IRI-INE	240662	272431
408	VGDH-03 -PIPING	4-QD-3201939	Piping Inspection (Class2)	SV	INT									I						IRI-INE	241344	272913

PREVENTIVE MAINTENANCE YEARLY SCHEDULE
PLANT : VCDH YEAR : 2023

Form No.
Effective Date 09.11.2022
Revision 3

Legend Text : B = Program Back-up; C = Calibrate; F = Function Test; H = Overhaul; I = Inspect; L = Lubricate; M = Strategy Plan; P = Preventive; Q = Check oil quality
S = Service; T = Stand by condition check; U = Running condition check; V = Verify

Item	S.No.	Equipment No.	Maintenance Item Description	Cycle	Minut.	Act.	Type	Jan	Feb	Mar	Apr	May	Jun	Jul	Aug	Sep	Oct	Nov	Dec	Work Center	Minut. Plan	Maintenance
273	VGDH-03 -PIPING	3-QD-4300102	Piping Inspection (Class2)	SV	INT													I		IRI-INE	241918	273485
274	VGDH-03 -PIPING	3-QD-4300103	Piping Inspection (Class2)	SV	INT													I		IRI-INE	241917	273486
275	VGDH-03 -PIPING	3-QD-4300104	Piping Inspection (Class2)	SV	INT													I		IRI-INE	241918	273487
276	VGDH-03 -PIPING	3-QD-4300105	Piping Inspection (Class2)	SV	INT													I		IRI-INE	241919	273488
277	VGDH-03 -PIPING	3-QD-4305116	Piping Inspection (Class2)	SV	INT													I		IRI-INE	241938	273507
278	VGDH-03 -PIPING	3-QD-4305117	Piping Inspection (Class2)	SV	INT													I		IRI-INE	241939	273508
279	VGDH-03 -PIPING	3-QD-4300101	Piping Inspection (Class2)	SV	INT													I		IRI-INE	241960	273519
280	VGDH-03 -PIPING	3-QD-4300102	Piping Inspection (Class2)	SV	INT													I		IRI-INE	241961	273520
281	VGDH-03 -PIPING	3-QD-4300103	Piping Inspection (Class2)	SV	INT													I		IRI-INE	241962	273521
282	VGDH-03 -PIPING	3-QD-4300104	Piping Inspection (Class2)	SV	INT													I		IRI-INE	241963	273522
283	VGDH-03 -PIPING	3-QD-4300101	Piping Inspection (Class2)	SV	INT													I		IRI-INE	241966	273525
284	VGDH-03 -PIPING	3-QD-4300102	Piping Inspection (Class2)	SV	INT													I		IRI-INE	241967	273526
285	VGDH-03 -PIPING	3-QD-4300103	Piping Inspection (Class2)	SV	INT													I		IRI-INE	241968	273527
286	VGDH-03 -PIPING	3-QD-4300106	Piping Inspection (Class2)	SV	INT													I		IRI-INE	241961	273530
287	VGDH-03 -PIPING	3-QD-4300107	Piping Inspection (Class2)	SV	INT													I		IRI-INE	241962	273531
288	VGDH-03 -PIPING	3-QD-4300115	Piping Inspection (Class2)	SV	INT													I		IRI-INE	241968	273535
289	VGDH-30 -PIPING	3-QM-3021003	Piping Inspection (Class4L)	SV	INT						I									IRI-INE	240900	272460
290	VGDH-00 -PIPING	3-QA-0500022	Piping Inspection (Class2)	SV	INT							I								IRI-INE	233303	264504
291	VGDH-30 -PIPING	3-QA-3000012	Piping Inspection (Class2)	SV	INT								I							IRI-INE	240006	272475
292	VGDH-30 -PIPING	3-QA-3000019	Piping Inspection (Class2)	SV	INT									I						IRI-INE	230628	272497
293	VGDH-30 -PIPING	3-QA-3012008	Piping Inspection (Class2)	SV	INT										I					IRI-INE	240050	272510
294	VGDH-30 -PIPING	3-QA-3020017	Piping Inspection (Class2)	SV	INT											I				IRI-INE	240059	272520
295	VGDH-30 -PIPING	3-QA-3020008	Piping Inspection (Class2)	SV	INT												I			IRI-INE	233363	264503
296	VGDH-30 -PIPING	3-QA-3020009	Piping Inspection (Class2)	SV	INT													I		IRI-INE	233360	264504
297	VGDH-30 -PIPING	3-QA-3004040	Piping Inspection (Class2)	SV	INT													I		IRI-INE	241568	273137
298	VGDH-32 -PIPING	3-QA-3200049	Piping Inspection (Class2)	SV	INT													I		IRI-INE	241577	273145
299	VGDH-30 -PIPING	3-QA-3215017	Piping Inspection (Class2)	SV	INT													I		IRI-INE	241597	273166
300	VGDH-32 -PIPING	3-QA-3220133	Piping Inspection (Class2)	SV	INT													I		IRI-INE	241602	273171
301	VGDH-37 -PIPING	3-QA-3709008	Piping Inspection (Class2)	SV	INT													I		IRI-INE	241745	273134
302	VGDH-30 -PIPING	3-QC-0600009	Piping Inspection (Class2)	SV	INT							I								IRI-INE	232357	264508
303	VGDH-30 -PIPING	3-QC-0500020	Piping Inspection (Class2)	SV	INT							I								IRI-INE	233360	264531
304	VGDH-30 -PIPING	3-QW-3012006	Piping Inspection (Class2)	SV	INT										I					IRI-INE	240095	272664
305	VGDH-30 -PIPING	3-Q-020001	Piping Inspection (Class2)	SV	INT											I				IRI-INE	240708	272737
306	VGDH-30 -PIPING	3-Q-090012	Piping Inspection (Class2)	SV	INT												I			IRI-INE	340771	272540

[illegible][illegible]

PLANT: VGDHT YEAR: 2023

Form No.
Effective Date 09.11.2022
Revision 3

Legend Text : B = Program Back-up C = Calibrate F = Function Test H = Overhaul I = Inspect L = Lubricate M = Strategy Plan P = Preventive Q = Check oil quality
S = Service T = Stand by condition check U = Running condition check V = Verify

Item	S. No.	Equipment No.	Maintenance Item Description	Cycle	Unit	Alt.	Type	30	60	90	120	150	180	210	240	270	300	330	360	390	420	450	480	510	540	570	600	630	660	690	720	750	780	810	840	870	900	930	960	990	1020	1050	1080	1110	1140	1170	1200	1230	1260	1290	1320	1350	1380	1410	1440	1470	1500	1530	1560	1590	1620	1650	1680	1710	1740	1770	1800	1830	1860	1890	1920	1950	1980	2010	2040	2070	2100	2130	2160	2190	2220	2250	2280	2310	2340	2370	2400	2430	2460	2490	2520	2550	2580	2610	2640	2670	2700	2730	2760	2790	2820	2850	2880	2910	2940	2970	3000	3030	3060	3090	3120	3150	3180	3210	3240	3270	3300	3330	3360	3390	3420	3450	3480	3510	3540	3570	3600	3630	3660	3690	3720	3750	3780	3810	3840	3870	3900	3930	3960	3990	4020	4050	4080	4110	4140	4170	4200	4230	4260	4290	4320	4350	4380	4410	4440	4470	4500	4530	4560	4590	4620	4650	4680	4710	4740	4770	4800	4830	4860	4890	4920	4950	4980	5010	5040	5070	5100	5130	5160	5190	5220	5250	5280	5310	5340	5370	5400	5430	5460	5490	5520	5550	5580	5610	5640	5670	5700	5730	5760	5790	5820	5850	5880	5910	5940	5970	6000	6030	6060	6090	6120	6150	6180	6210	6240	6270	6300	6330	6360	6390	6420	6450	6480	6510	6540	6570	6600	6630	6660	6690	6720	6750	6780	6810	6840	6870	6900	6930	6960	6990	7020	7050	7080	7110	7140	7170	7200	7230	7260	7290	7320	7350	7380	7410	7440	7470	7500	7530	7560	7590	7620	7650	7680	7710	7740	7770	7800	7830	7860	7890	7920	7950	7980	8010	8040	8070	8100	8130	8160	8190	8220	8250	8280	8310	8340	8370	8400	8430	8460	8490	8520	8550	8580	8610	8640	8670	8700	8730	8760	8790	8820	8850	8880	8910	8940	8970	9000	9030	9060	9090	9120	9150	9180	9210	9240	9270	9300	9330	9360	9390	9420	9450	9480	9510	9540	9570	9600	9630	9660	9690	9720	9750	9780	9810	9840	9870	9900	9930	9960	9990	10020	10050	10080	10110	10140	10170	10200	10230	10260	10290	10320	10350	10380	10410	10440	10470	10500	10530	10560	10590	10620	10650	10680	10710	10740	10770	10800	10830	10860	10890	10920	10950	10980	11010	11040	11070	11100	11130	11160	11190	11220	11250	11280	11310	11340	11370	11400	11430	11460	11490	11520	11550	11580	11610	11640	11670	11700	11730	11760	11790	11820	11850	11880	11910	11940	11970	12000	12030	12060	12090	12120	12150	12180	12210	12240	12270	12300	12330	12360	12390	12420	12450	12480	12510	12540	12570	12600	12630	12660	12690	12720	12750	12780	12810	12840	12870	12900	12930	12960	12990	13020	13050	13080	13110	13140	13170	13200																																																																																																																																																																																																																																																																																		
749	V004-36	+30P012A	V004-30P012A-001	INSPECTION OF HTL-30P012A	6M	PM																																																																																																																																																																																																																																																																																																																																																																																																																																																																																																																																																																																																																																																																																																																																											

PLANT: VGGHT YEAR: 2023

Form No.
Effective Date 09.11.2022
Revision 3

Legend Text : B = Program Back-up C = Calibrate F = Function Test H = Overhaul I = Inspect L = Lubricate M = Strategy Plan P = Preventive Q = Check oil quality
S = Service T = Stand by condition check U = Running condition check V = Verify

Item	Item No.	Equipment No.	Maintenance Item Description	Cycle	Unit	Act.	Type	Jan	Feb	Mar	Apr	May	Jun	Jul	Aug	Sep	Oct	Nov	Dec	Wk Center	Min. Plan	Maintenance	
783	Y00H-02A-1-0207	Y00H-31A009-1N02	STAND BY CONDITION CHECK OF 31A007-1N02	6M	PM															RRC-E4RD	143822	142074	
784	Y00H-02-1-0210	Y00H-32A-07-0P0	FUNCTION TEST: Line alarm pushbutton (OIL P)	1Y	PM			I	I	I	I	I	I	I	I	I	I	I	I	RRC-E4RD	150240	153714	
785	Y00H-02-1-0210	Y00H-32A-07-0P0	INSPECTION: Grounding point of Unit 32	1Y	PM			I	I	I	I	I	I	I	I	I	I	I	I	RRC-E4RD	150312	160272	
786	Y00H-02-1-0207	Y00H-32A-09-0001	INSPECTION: Power Cables, 3 Phase GND	1Y	PM			I	I	I	I	I	I	I	I	I	I	I	I	RRC-E4RD	150344	153716	
787	Y00H-02-1-0201B	Y00H-3201A-0A01	VEHIBATION INSP & ANALYSIS M/C	1Y	PM			I	I	I	I	I	I	I	I	I	I	I	I	HA-INAB	150350	164200	
788	Y00H-02-1-0201B	Y00H-3201A-0A01	FILLING OIL GREASE OF 3201A-0A01	3M	PM			I	I	I	I	I	I	I	I	I	I	I	I	RRC-E4RD	150350	150815	
789	Y00H-02-1-0201B	Y00H-3201A-0A01	STAND BY CONDITION CHECK 3201A-0A01	1Y	PM			I	I	I	I	I	I	I	I	I	I	I	I	RRC-E4RD	150351	144935	
790	Y00H-02-1-0201B	Y00H-3201A-0A02	VEHIBATION INSP & ANALYSIS M/C	1Y	PM			I	I	I	I	I	I	I	I	I	I	I	I	HA-INAB	150843	164210	
791	Y00H-02-1-0201B	Y00H-3201A-0A02	FILLING OIL GREASE OF Y00H-02-1-0201B-0A02	3M	PM			I	I	I	I	I	I	I	I	I	I	I	I	RRC-E4RD	150935	150816	
792	Y00H-02-1-0201B	Y00H-3201A-0A02	STAND BY CONDITION CHECK 3201A-0A02	1Y	PM			I	I	I	I	I	I	I	I	I	I	I	I	RRC-E4RD	150944	144938	
793	Y00H-02-1-0202A1	Y00H-3202A-1A01	VEHIBATION INSP & ANALYSIS M/C	1Y	PM			I	I	I	I	I	I	I	I	I	I	I	I	HA-INAB	150952	164211	
794	Y00H-02-1-0202A1	Y00H-3202A-1A01	FILLING OIL GREASE OF 3202A-1A01	3M	PM			I	I	I	I	I	I	I	I	I	I	I	I	RRC-E4RD	150955	150817	
795	Y00H-02-1-0202A1	Y00H-3202A-1A01	STAND BY CONDITION CHECK OF 3202A-1A01	1Y	PM			I	I	I	I	I	I	I	I	I	I	I	I	RRC-E4RD	150955	144937	
796	Y00H-02-1-0202A2	Y00H-3202A-1A02	VEHIBATION INSP & ANALYSIS M/C	1Y	PM			I	I	I	I	I	I	I	I	I	I	I	I	HA-INAB	150955	164212	
797	Y00H-02-1-0202A2	Y00H-3202A-1A02	FILLING OIL GREASE OF 3202A-1A02	3M	PM			I	I	I	I	I	I	I	I	I	I	I	I	RRC-E4RD	150955	150818	
798	Y00H-02-1-0202A2	Y00H-3202A-1A02	STAND BY CONDITION CHECK OF 3202A-1A02	1Y	PM			I	I	I	I	I	I	I	I	I	I	I	I	RRC-E4RD	150955	144938	
799	Y00H-02-2-00MM	Y00H-32A-03	FUNCTION TEST: INTERCOM 32A-03	6M	PM							F	F							F	1511-000	152145	160751
800	Y00H-02-2-00MM	Y00H-32A-03	FUNCTION TEST: INTERCOM 32A-03	6M	PM							F	F							F	1511-000	152147	160753
801	Y00H-02-2-00MM	Y00H-32A-05	FUNCTION TEST: INTERCOM 32A-05	6M	PM							F	F							F	1511-000	152149	160755
802	Y00H-02-2-00MM	Y00H-32A-06	FUNCTION TEST: INTERCOM 32A-06	6M	PM							F	F							F	1511-000	152152	160758
803	Y00H-02-2-00MM	Y00H-32A-09	FUNCTION TEST: INTERCOM 32A-09	6M	PM							F	F							F	1511-000	152153	160759
804	Y00H-02-2-INTERCOM	Y00H-32A-010	INSPECTION:FUNCTION TEST 32A-010	6M	PM							F	F							F	RRC-E4RD	151964	160760
805	Y00H-02-2-INTERCOM	Y00H-32A-011	INSPECTION:FUNCTION TEST 32A-011	6M	PM							F	F							F	RRC-E4RD	152165	160761
806	Y00H-02-2-INTERCOM	Y00H-32A-012	INSPECTION:FUNCTION TEST 32A-012	6M	PM							F	F							F	RRC-E4RD	152166	160762
807	Y00H-02-2-INTERCOM	Y00H-32A-013	INSPECTION:FUNCTION TEST 32A-013	6M	PM							F	F							F	RRC-E4RD	152167	160763
808	Y00H-02-3-0201A	Y00H-3201A-0A01	INSPECTION: 3201A-0A01 HYDROGEN COMPRES	1Y	PM			I	I	I	I	I	I	I	I	I	I	P		HA-INAB	150879	164203	
809	Y00H-02-3-0201A	Y00H-3201A-0A01	OIL INSP & ANALYSIS M/C	1Y	PM			I	I	I	I	I	I	I	I	I	I	I	I	HA-INAB	160340	202303	
810	Y00H-02-3-0201A	Y00H-3201A-0A01	STAND BY CONDITION CHECK 3201A-0A01	1Y	PM			I	I	I	I	I	I	I	I	I	I	I	I	RRC-E4RD	160342	150880	
811	Y00H-02-3-0201A	Y00H-3201A-0A01	FILLING OIL GREASE MOTOR 3201A-0A01	3M	PM			I	I	I	I	I	I	I	I	I	I	I	I	RRC-E4RD	151354	144745	
812	Y00H-02-3-0201A	Y00H-3201A-0A02	STAND BY CONDITION CHECK 3201A-0A02	1Y	PM															F	RRC-E4RD	160222	152801
813	Y00H-02-3-0201A	Y00H-3201A-0A03	STAND BY CONDITION CHECK 3201A-0A03	6M	PM															F	RRC-E4RD	160233	150806
814	Y00H-02-3-0201A	Y00H-3201A-0A04	STAND BY CONDITION CHECK 3201A-0A04	6M	PM															F	RRC-E4RD	160233	150808
815	Y00H-02-3-0201B	Y00H-3201B-0A01	HA Y00H-02-3-0201B-0A01 HYDROGEN COMPRES	1Y	PM															P	CHC-OPL	113860	141661
816	Y00H-02-3-0201B	Y00H-3201B-0A01	CHLORIDEEN COMPRESSOR 3201B-01	2Y	PM															F	CHC-OPL	152666	160316

PLANT: VOOHT YEAR: 2023

Form No.
Effective Date 09.11.2022
Revision 3

Legend Text : B = Program Back-up C = Calibrate F = Function Test H = Overhaul I = Inspect L = Lubricate M = Strategy Plan P = Preventive Q = Check oil quality
S = Service T = Stand by condition check U = Running condition check V = Verify

Item	PL No.	Equipment No.	Maintenance Item Description	Cycle	Unit	Act.	Type	2018	2019	2020	2021	2022	2023	2024	2025	2026	2027	2028	2029	2030	2031	2032	2033	2034	2035	2036	2037	2038	2039	2040	2041	2042	2043	2044	2045	2046	2047	2048	2049	2050	2051	2052	2053	2054	2055	2056	2057	2058	2059	2060	2061	2062	2063	2064	2065	2066	2067	2068	2069	2070	2071	2072	2073	2074	2075	2076	2077	2078	2079	2080	2081	2082	2083	2084	2085	2086	2087	2088	2089	2090	2091	2092	2093	2094	2095	2096	2097	2098	2099	2100	2101	2102	2103	2104	2105	2106	2107	2108	2109	2110	2111	2112	2113	2114	2115	2116	2117	2118	2119	2120	2121	2122	2123	2124	2125	2126	2127	2128	2129	2130	2131	2132	2133	2134	2135	2136	2137	2138	2139	2140	2141	2142	2143	2144	2145	2146	2147	2148	2149	2150	2151	2152	2153	2154	2155	2156	2157	2158	2159	2160	2161	2162	2163	2164	2165	2166	2167	2168	2169	2170	2171	2172	2173	2174	2175	2176	2177	2178	2179	2180	2181	2182	2183	2184	2185	2186	2187	2188	2189	2190	2191	2192	2193	2194	2195	2196	2197	2198	2199	2200	2201	2202	2203	2204	2205	2206	2207	2208	2209	2210	2211	2212	2213	2214	2215	2216	2217	2218	2219	2220	2221	2222	2223	2224	2225	2226	2227	2228	2229	2230	2231	2232	2233	2234	2235	2236	2237	2238	2239	2240	2241	2242	2243	2244	2245	2246	2247	2248	2249	2250	2251	2252	2253	2254	2255	2256	2257	2258	2259	2260	2261	2262	2263	2264	2265	2266	2267	2268	2269	2270	2271	2272	2273	2274	2275	2276	2277	2278	2279	2280	2281	2282	2283	2284	2285	2286	2287	2288	2289	2290	2291	2292	2293	2294	2295	2296	2297	2298	2299	2300	2301	2302	2303	2304	2305	2306	2307	2308	2309	2310	2311	2312	2313	2314	2315	2316	2317	2318	2319	2320	2321	2322	2323	2324	2325	2326	2327	2328	2329	2330	2331	2332	2333	2334	2335	2336	2337	2338	2339	2340	2341	2342	2343	2344	2345	2346	2347	2348	2349	2350	2351	2352	2353	2354	2355	2356	2357	2358	2359	2360	2361	2362	2363	2364	2365	2366	2367	2368	2369	2370	2371	2372	2373	2374	2375	2376	2377	2378	2379	2380	2381	2382	2383	2384	2385	2386	2387	2388	2389	2390	2391	2392	2393	2394	2395	2396	2397	2398	2399	2400	2401	2402	2403	2404	2405	2406	2407	2408	2409	2410	2411	2412	2413	2414	2415	2416	2417	2418	2419	2420	2421	2422	2423	2424	2425	2426	2427	2428	2429	2430	2431	2432	2433	2434	2435	2436	2437	2438	2439	2440	2441	2442	2443	2444	2445	2446	2447	2448	2449	2450	2451	2452	2453	2454	2455	2456	2457	2458	2459	2460	2461	2462	2463	2464	2465	2466	2467	2468	2469	2470	2471	2472	2473	2474	2475	2476	2477	2478	2479	2480	2481	2482	2483	2484	2485	2486	2487	2488	2489	2490	2491	2492	2493	2494	2495	2496	2497	2498	2499	2500
------	--------	---------------	------------------------------	-------	------	------	------	------	------	------	------	------	------	------	------	------	------	------	------	------	------	------	------	------	------	------	------	------	------	------	------	------	------	------	------	------	------	------	------	------	------	------	------	------	------	------	------	------	------	------	------	------	------	------	------	------	------	------	------	------	------	------	------	------	------	------	------	------	------	------	------	------	------	------	------	------	------	------	------	------	------	------	------	------	------	------	------	------	------	------	------	------	------	------	------	------	------	------	------	------	------	------	------	------	------	------	------	------	------	------	------	------	------	------	------	------	------	------	------	------	------	------	------	------	------	------	------	------	------	------	------	------	------	------	------	------	------	------	------	------	------	------	------	------	------	------	------	------	------	------	------	------	------	------	------	------	------	------	------	------	------	------	------	------	------	------	------	------	------	------	------	------	------	------	------	------	------	------	------	------	------	------	------	------	------	------	------	------	------	------	------	------	------	------	------	------	------	------	------	------	------	------	------	------	------	------	------	------	------	------	------	------	------	------	------	------	------	------	------	------	------	------	------	------	------	------	------	------	------	------	------	------	------	------	------	------	------	------	------	------	------	------	------	------	------	------	------	------	------	------	------	------	------	------	------	------	------	------	------	------	------	------	------	------	------	------	------	------	------	------	------	------	------	------	------	------	------	------	------	------	------	------	------	------	------	------	------	------	------	------	------	------	------	------	------	------	------	------	------	------	------	------	------	------	------	------	------	------	------	------	------	------	------	------	------	------	------	------	------	------	------	------	------	------	------	------	------	------	------	------	------	------	------	------	------	------	------	------	------	------	------	------	------	------	------	------	------	------	------	------	------	------	------	------	------	------	------	------	------	------	------	------	------	------	------	------	------	------	------	------	------	------	------	------	------	------	------	------	------	------	------	------	------	------	------	------	------	------	------	------	------	------	------	------	------	------	------	------	------	------	------	------	------	------	------	------	------	------	------	------	------	------	------	------	------	------	------	------	------	------	------	------	------	------	------	------	------	------	------	------	------	------	------	------	------	------	------	------	------	------	------	------	------	------	------	------	------	------	------	------	------	------	------	------	------	------	------	------	------	------	------	------	------	------	------	------	------	------	------	------	------	------	------	------	------	------	------	------	------	------	------	------	------	------	------	------	------	------	------	------

PLANT: VOOHT YEAR: 2023

Form No. _____
Effective Date 09.11.2022
Revision 3

Legend Text : B = Program Back-up C = Calibrate F = Function Test H = Overhaul I = Inspect L = Lubricate M = Strategy Plan P = Preventive Q = Check oil quality
S = Service T = Stand by condition check U = Running condition check V = Verify

Item	PL No.	Equipment No.	Maintenance Item Description	Cycle	Maint. Act. Type	DR	FR	GR	HR	LR	MA	RC	SD	OC	DC	RC Center	Min. Plan	Maintenance
716	YCDH-30 <30P008A	YCDH-30P008A-401	FILLING GREASE 30P008A-401	6M	RM		L		L							RM-REQD	84476	110037
717	YCDH-30 <30P008A	YCDH-30P008A-402	STAND BY CONDITION CHECK 30P008A-402	6M	RM					T						RM-REQD	115383	143976
718	YCDH-30 <30P008A	YCDH-30P008A-P01	VERIFICATION INSPE & ANALYSIS M/C	24	INS		I		I		I		I			IRI-PAVE	94448	116281
719	YCDH-30 <30P008A	YCDH-30P008A-P01	INSPECTION OF HTU-30P008A	6M	RM		L		L		L		L			RM-REQD	43098	45988
720	YCDH-30 <30P008A	YCDH-30P008A-P01	LUBRICATION OF HTU-30P008A	24	RM		L		L		L		L			RM-REQD	43098	45990
721	YCDH-30 <30P008B	YCDH-30P008B-401	STAND BY CONDITION CHECK 30P008B-401	6M	RM		T		L							RM-REQD	28633	28643
722	YCDH-30 <30P008B	YCDH-30P008B-402	STAND BY CHECK OF 30P008B-M/C	6M	RM				I		I					RM-REQD	111933	144279
723	YCDH-30 <30P008B	YCDH-30P008B-P01	VERIFICATION INSPE & ANALYSIS M/C	24	INS		I		I		I		I			IRI-PAVE	94449	116333
724	YCDH-30 <30P008B	YCDH-30P008B-P01	INSPECTION OF YCDH-30P008B-P01	6M	RM		L		L		L		L			RM-REQD	44391	45991
725	YCDH-30 <30P008B	YCDH-30P008B-P01	LUBRICATION OF HTU-30P008B	24	RM		L		L		L		L			RM-REQD	44392	45992
726	YCDH-30 <30P008A	YCDH-30P008A-401	Change Lub Oil For Motor 30P008A-401	6M	RM											RM-REQD	113529	141473
727	YCDH-30 <30P008A	YCDH-30P008A-401	STAND BY CONDITION CHECK 30P008A-401	6M	RM									T		RM-REQD	153353	141474
728	YCDH-30 <30P008A	YCDH-30P008A-401A	STAND BY CONDITION CHECK 30P008A-401A	6M	RM			T								RM-REQD	28415	28415
729	YCDH-30 <30P008A	YCDH-30P008A-401A	FILLING GREASE 30P008A-401A	6M	RM				T							RM-REQD	153528	110038
730	YCDH-30 <30P008A	YCDH-30P008A-401	VERIFICATION INSPE & ANALYSIS M/C	24	INS		I		I		I		I			IRI-PAVE	94448	116282
731	YCDH-30 <30P008A	YCDH-30P008A-P01	INSPECTION OF HTU-30P008A	6M	RM		L		L		L		L			RM-REQD	43098	45994
732	YCDH-30 <30P008A	YCDH-30P008A-401A	VERIFICATION INSPE & ANALYSIS M/C	24	INS		I		I		I		I			IRI-PAVE	94448	116283
733	YCDH-30 <30P008A	YCDH-30P008A-P01A	INSPECTION OF HTU-30P008A-P01A	6M	RM											RM-REQD	43393	45993
734	YCDH-30 <30P008A	YCDH-30P008A-P01B	INSPECTION OF HTU-30P008A-P01B	6M	RM				I							RM-REQD	113568	141611
735	YCDH-30 <30P008B	YCDH-30P008B-401	STAND BY CONDITION CHECK 30P008B-401	6M	RM							L	T			RM-REQD	132568	141519
736	YCDH-30 <30P008B	YCDH-30P008B-401	Change Lub Oil For Motor 30P008B-401	6M	RM			L	T							RM-REQD	113570	141520
737	YCDH-30 <30P008B	YCDH-30P008B-401A	STAND BY CONDITION CHECK 30P008B-401A	6M	RM			L	T							RM-REQD	28417	28417
738	YCDH-30 <30P008B	YCDH-30P008B-401A	FILLING GREASE 30P008B-401A	6M	RM							L				RM-REQD	106027	110049
739	YCDH-30 <30P008B	YCDH-30P008B-P01	VERIFICATION INSPE & ANALYSIS M/C	24	INS		I		I		I		I			IRI-PAVE	94449	116334
740	YCDH-30 <30P008B	YCDH-30P008B-P01A	INSPECTION OF HTU-30P008B-P01A	6M	RM											RM-REQD	43098	45996
741	YCDH-30 <30P008B	YCDH-30P008B-P01B	INSPECTION OF HTU-30P008B-P01B	6M	RM				I							RM-REQD	113569	141612
742	YCDH-30 <30P010	YCDH-30P010-401	STAND BY CONDITION CHECK 30P010-401	6M	RM								T			RM-REQD	28418	28418
743	YCDH-30 <30P010	YCDH-30P010-401	FILLING GREASE 30P010-401	6M	RM				L							RM-REQD	84834	110666
744	YCDH-30 <30P011	YCDH-30P011-401	STAND BY CONDITION CHECK 30P011-401	6M	RM					T						RM-REQD	28419	28419
745	YCDH-30 <30P011	YCDH-30P011-401	FILLING GREASE 30P011-401	6M	RM											RM-REQD	84834	110666
746	YCDH-30 <30P012A	YCDH-30P012A-401	STAND BY CONDITION CHECK OF 30P012-401	6M	RM				T					T		RM-REQD	28442	28442
747	YCDH-30 <30P012A	YCDH-30P012A-401	FILLING GREASE 30P012A-401	6M	RM											RM-REQD	84825	110610

Form No. _____

Effective Date 09.11.2022

Revision 3

Legend Text : B = Program Back-up C = Calibrate F = Function Test H = Overhaul I = Inspect L = Lubricate M = Strategy Plan P = Preventive Q = Check oil quality
S = Service T = Stand by condition check U = Running condition check V = Verify

Item	Item No.	Equipment No.	Maintenance Item Description	Cycle	Unit	Act	Type	TS	TR	GR	GC	LR	AC	RF	CR	RC	CR Date	Min. Price	Maintenance
817	VOH-3-2-32P001B	VOH-32P01B-001	OIL INSP & ANALYSIS M/C	3A	INT			I	I	I	I	I	I	I	I	I	IRI-IND	200341	202304
818	VOH-3-2-32P001B	VOH-32P01B-001	STAND BY COOITION CHECK 32P01B-001	6A	INT												RSI-ERD	100923	100901
819	VOH-3-2-32P001B	VOH-32P01B-001	FILLING GREASE OF 32P01B-001	3A	INT			L			L		L				RSI-ERD	113329	141476
820	VOH-3-2-32P001B	VOH-32P01B-002	STAND BY COOITION CHECK 32P01B-002	6A	INT										T		RSI-ERD	100923	100901
821	VOH-3-2-32P001B	VOH-32P01B-003	STAND BY COOITION CHECK 32P01B-003	6A	INT									T			RSI-ERD	100922	100902
822	VOH-3-2-32P001B	VOH-32P01B-004	STAND BY COOITION CHECK 32P01B-004	6A	INT										I	T	RSI-ERD	100923	100910
823	VOH-3-2-32P010A	VOH-32P01A-001	VERIFICATION INSP & ANALYSIS M/C	3A	INT			I		I	I	I	I	I			IRI-PAV	94150	116331
824	VOH-3-2-32P010A	VOH-32P01A-001	VERIFICATION INSP & ANALYSIS M/C	3A	INT			I		I	I	I	I	I			IRI-PAV	94184	116380
825	VOH-3-2-32P010B	VOH-32P01B-001	VERIFICATION INSP & ANALYSIS M/C	3A	INT			I		I	I	I	I	I			IRI-PAV	94150	116317
826	VOH-3-2-32P010B	VOH-32P01B-001	VERIFICATION INSP & ANALYSIS M/C	3A	INT			I		I	I	I	I	I			IRI-PAV	94383	119245
827	VOH-3-2-32P010C	VOH-32P01C-001	VERIFICATION INSP & ANALYSIS M/C	3A	INT			I		I	I	I	I	I			IRI-PAV	94383	119253
828	VOH-3-2-32P010C	VOH-32P01C-001	VERIFICATION INSP & ANALYSIS M/C	3A	INT			I		I	I	I	I	I			IRI-PAV	94384	119288
829	VOH-3-2-32P020A	VOH-32P02A-001	STAND BY COOITION CHECK OF 32P02A-001	6A	INT										T		RSI-ERD	94459	24445
830	VOH-3-2-32P020A	VOH-32P02A-001	FILLING GREASE OF VOH-3-2P02A-001	6A	INT												RSI-ERD	94457	24456
831	VOH-3-2-32P020A	VOH-32P02A-001	FILLING GREASE OF 32P02A-001	6A	INT												RSI-ERD	94338	170015
832	VOH-3-2-32P020A	VOH-32P02A-001	VERIFICATION INSP & ANALYSIS M/C	2B	INT			I		I	I	I	I	I			IRI-PAV	94418	116284
833	VOH-3-2-32P020A	VOH-32P02A-001	INSPECTION OF HTU-32P02A	6A	INT												RSI-ERD	94420	46020
834	VOH-3-2-32P02B	VOH-32P02B-001	STAND BY COOITION CHECK 32P02B-001	6A	INT			T									RSI-ERD	28440	28440
835	VOH-3-2-32P02B	VOH-32P02B-001	FILLING GREASE OF 32P02B-001	6A	INT								T				RSI-ERD	94432	116498
836	VOH-3-2-32P02B	VOH-32P02B-001	FILLING GREASE OF 32P02B-001	6A	INT			I		L		I		I			RSI-ERD	94325	100508
837	VOH-3-2-32P02B	VOH-32P02B-001	VERIFICATION INSP & ANALYSIS M/C	2A	INT			I		I	I	I	I	I			IRI-PAV	94439	141356
838	VOH-3-2-32P02B	VOH-32P02B-001	INSPECTION OF HTU-32P02B	6A	INT												RSI-ERD	94423	46023
839	VOH-3-2-32P05A	VOH-32P05A-001	STAND BY COOITION CHECK FOR 32P05A-001	6A	INT			I		T		I		T			RSI-ERD	94663	28463
840	VOH-3-2-32P05A	VOH-32P05A-001	FILLING GREASE FOR 32P05A-001	6A	INT								L				RSI-ERD	94659	28465
841	VOH-3-2-32P05A	VOH-32P05A-001	STAND BY COOITION CHECK FOR 32P05A-001	6A	INT												RSI-ERD	28464	28464
842	VOH-3-2-32P05A	VOH-32P05A-001	FILLING GREASE FOR 32P05A-001	6A	INT												RSI-ERD	94629	119051
843	VOH-3-2-32P05A	VOH-32P05A-001	STAND BY COOITION CHECK OF 32P05A-001	6A	INT			I		T		I		T			RSI-ERD	28465	28465
844	VOH-3-2-32P05A	VOH-32P05A-001	FILLING GREASE OF 32P05A-001	6A	INT			L									RSI-ERD	94622	110095
845	VOH-3-2-32P05A	VOH-32P05A-001	FILLING GREASE OF 32P05A-001	6A	INT			I		L		I		I			RSI-ERD	94325	110507
846	VOH-3-2-32P05A	VOH-32P05A-001	VERIFICATION INSP & ANALYSIS M/C	2A	INT			I		I	I	I	I	I			IRI-PAV	94418	116286
847	VOH-3-2-32P05A	VOH-32P05A-001	INSPECTION OF HTU-32P05A	6A	INT												RSI-ERD	44426	46026
848	VOH-3-2-32P05B	VOH-32P05B-001	STAND BY COOITION CHECK 32P05B-001	6A	INT			I		T					I		RSI-ERD	28466	28466
849	VOH-3-2-32P05B	VOH-32P05B-001	FILLING GREASE FOR 32P05B-001	6A	INT			L									RSI-ERD	94329	100908
850	VOH-3-2-32P05B	VOH-32P05B-001	VERIFICATION INSP & ANALYSIS M/C	2A	INT			I		I	I	I	I	I			IRI-PAV	94419	141338

Form No.

Effective Date 09.11.2022

Revision 3

Legend Text : B = Program Back-up C = Calibrate F = Function Test H = Overhaul I = Inspect L = Lubricate M = Strategy Plan P = Preventive Q = Check oil quality
S = Service T = Stand by condition check U = Running condition check V = Verify

Item	U. No.	Equipment No.	Maintenance Item Description	Spec	Min.	Act.	Type	AS	TS	MS	GR	LR	AR	SR	CR	DR	CR Date	Min. Plan	Maintenance	
851	YCH-32	+32P005B	YCH-32P005B-001	INSPECTION OF HTU-32P005B	0A	INT						I				I	851-005B	44627	46027	
852	YCH-32	+32P005B	YCH-32P005B-001	STAND BY COYDION CHECK 32P005B-001	0A	INT										I	851-005B	44627	46027	
853	YCH-32	+32P005B	YCH-32P005B-001	STAND BY COYDION CHECK 32P005B-001	0A	INT						T				I	851-005B	132793	132791	
854	YCH-32	+32P007	YCH-32P007-001	STAND BY COYDION CHECK 32P007-001	0A	INT						T				I	854-007	28678	28678	
855	YCH-32	+32P007	YCH-32P007-001	FILLING GREASE OF 32P007-001	0A	INT						L			L	I	855-007	84838	110617	
856	YCH-32	+32P007	YCH-32P007-001	INSPECTION OF HTU-32P007	1Y	INT										I	856-007	46428	46028	
857	YCH-32	+32P008A	YCH-32P008A-001	STAND BY COYDION CHECK 32P008A-001	0A	INT						T				I	857-008	109222	126706	
858	YCH-32	+32P008A	YCH-32P008A-001	STAND BY COYDION CHECK 32P008A-001	0A	INT										T	858-008	109223	135706	
859	YCH-32	+32P008A	YCH-32P008A-001	STAND BY COYDION CHECK 32P008A-001	0A	INT						T				I	859-008	109222	135707	
860	YCH-32	+32P008A	YCH-32P008A-001	STAND BY COYDION CHECK 32P008A-001	0A	INT						T			T	I	860-008	109223	135703	
861	YCH-32	+32P010A	YCH-32P010A-001	STAND BY COYDION CHECK 32P010A-001	0A	INT						T				I	861-008	109232	135708	
862	YCH-32	+32P010A	YCH-32P010A-001	STAND BY COYDION CHECK 32P010A-001	0A	INT						T				I	862-008	109233	135704	
863	YCH-32	+32P010A	YCH-32P010A-001	STAND BY COYDION CHECK 32P010A-001	0A	INT						T				I	863-008	109232	135703	
864	YCH-32	+32P010A	YCH-32P010A-001	STAND BY COYDION CHECK 32P010A-001	0A	INT						T				I	864-008	109232	135706	
865	YCH-32	+32P010A	YCH-32P010A-001	STAND BY COYDION CHECK 32P010A-001	0A	INT						T				I	865-008	109232	135706	
866	YCH-32	+32P010A	YCH-32P010A-001	STAND BY COYDION CHECK 32P010A-001	0A	INT						T				I	866-008	109233	135706	
867	YCH-22	+0JMM	YCH-22S02	FUNCTION TEST INTERCOM 32-5-5	0A	INT						F				F	131-000	121948	150752	
868	YCH-22	+0JMM	YCH-22S04	FUNCTION TEST INTERCOM 32-5-4	0A	INT						F				F	131-000	121949	150754	
869	YCH-22	+0JMM	YCH-22S06	FUNCTION TEST INTERCOM 32-5-6	0A	INT						F				F	131-000	121950	150756	
870	YCH-22	+0JMM	YCH-22S07	FUNCTION TEST INTERCOM 32-5-7	0A	INT						F				F	131-000	121951	150757	
871	YCH-32	+32X001	YCH-32X001-0A01	STAND BY COYDION CHECK 32X001-0A01	0A	INT						T				I	871-000	29460	28480	
872	YCH-32	+32X001	YCH-32X001-0A01A	STAND BY COYDION CHECK FOR 32X001-0A01A	0A	INT						T				I	872-000	28481	28481	
873	YCH-32	+32X001	YCH-32X001-0A01B	STAND BY COYDION CHECK FOR 32X001-0A01B	0A	INT						T				I	873-000	28482	28482	
874	YCH-32	+32X001	YCH-32X001-0A02A	STAND BY CHECK OF 32X001-0A01	0A	INT						T				I	874-000	63462	143532	
875	YCH-32	+32X001	YCH-32X001-0A02B	STAND BY COYDION CHECK FOR 32X001-0A01	0A	INT						T				I	875-000	29458	28480	
876	YCH-32	+32X001	YCH-32X001-0A02C	STAND BY COYDION CHECK FOR 32X001-0A02A	0A	INT						T				I	876-000	28485	28485	
877	YCH-32	+32X001	YCH-32X001-0A03B	STAND BY COYDION CHECK FOR 32X001-0A03B	0A	INT						T				I	877-000	29456	28486	
878	YCH-32	+32X001	YCH-32X001-0A02A	INSPECTION OF HTU-32X001-0A02A	1Y	INT									I		878-000	46429	46029	
879	YCH-32	+32X001	YCH-32X001-0A02B	INSPECTION OF YCH-32 +32X001 -0A02B	1Y	INT								I		I	879-000	83443	104259	
880	YCH-32	+32GND-PS	YCH-32T-GROUND-PSA	INSPECTION-GROUNDING LOCK POINT UNIT 37	1Y	INT						I				I	880-000	150314	180272	
881	YCH-32	+INTERFZM	YCH-37H-01	ANALYSE YCH-32 INTERFZM	0A	INT						F				F	881-000	121961	150767	
882	YCH-32	+32H001	YCH-32H001-001	RM VDC-37 +32H001 -001	0A	INT					P				P	I	882-000	88105	111017	
883	YCH-32	+32H001	YCH-32H001-001	VERIFICATION INSP & ANALYSIS M/C	1A	INS		I	I	I	I	I	I	I	I	I	I	883-000	94147	180213
884	YCH-32	+32H001	YCH-32H001-001	FILLING GREASE OF 37001-001	2A	INT		I	I	I	I	I	I	I	I	I	I	884-000	83103	150074

PREVENTIVE MAINTENANCE YEARLY SCHEDULE																										Form No.
PLANT : KODR YEAR: 2023																										Effective Date 09-11-2022
Revision 3																										
Legend Text : B = Program Back-up C = Calibrate F = Function Test H = Overhaul I = Inspect L = Lubricate M = Strategy Plan P = Preventive Q = Check oil quality S = Service T = Stand by condition check U = Running condition check V = Verify																										
Form	S. No.	Equipment No.	Maintenance Tim Description	Days	Units	Act.	Type	PA	PE	PO	PP	PR	PS	PT	PU	PL	PI	PP	PT	PU	PC	PO	PP	PT	PU	PC
1,055	VCDH-316	-CHL-CD	VCD-HAT300021 VERIFY GAS DETECTOR AT300021	4th	MT				V					V	V						V	CAH-G3PW	266584	299349		
1,056	VCDH-316	-CHL-CD	VCD-HAT300022 VERIFY GAS DETECTOR AT300022	4th	MT				V					V	V						V	CAH-G3PW	266589	299350		
1,057	VCDH-316	-CHL-CD	VCD-HAT300023 VERIFY GAS DETECTOR AT300023	4th	MT				V					V	V						V	CAH-G3PW	266590	299351		
1,058	VCDH-316	-CHL-CD	VCD-HAT300024 VERIFY GAS DETECTOR AT300024	4th	MT				V					V	V						V	CAH-G3PW	266591	299352		
1,059	VCDH-316	-CHL-CD	VCD-HAT300025 VERIFY GAS DETECTOR AT300025	4th	MT				V					V	V						V	CAH-G3PW	266592	299353		
1,060	VCDH-316	-CHL-CD	VCD-HAT300026 VERIFY GAS DETECTOR AT300026	4th	MT				V					V	V						V	CAH-G3PW	266593	299354		
1,061	VCDH-316	-CHL-CD	VCD-HAT300027 VERIFY GAS DETECTOR AT300027	4th	MT				V					V	V						V	CAH-G3PW	266594	299355		
1,062	VCDH-316	-CHL-CD	VCD-HAT300028 VERIFY GAS DETECTOR AT300028	4th	MT				V					V	V						V	CAH-G3PW	266595	299356		
1,063	VCDH-316	-CHL-GAS	VERIFY O2 ANALYZER (% RANGE)	3rd	MT				V		V			V	V						V	CAH-G3PW	41232	42632		
1,064	VCDH-316	-CHL-GAS	VERIFY O2 ANALYZER (% RANGE)	3rd	MT				V		V			V	V						V	CAH-G3PW	41231	42631		
1,065	VCDH-316	-CHL-GAS	VERIFY S.G. ANALYZER	3rd	MT				V		V			V	V						V	CAH-G3PW	41230	42630		
1,066	VCDH-316	-CHL-CD	VCD-HAT300001 VERIFY GAS DETECTOR AT300001	4th	MT				V					V	V						V	CAH-G3PW	266585	299348		
1,067	VCDH-316	-CHL-CD	VCD-HAT300002 VERIFY GAS DETECTOR AT300002	4th	MT				V					V	V						V	CAH-G3PW	266586	299347		
1,068	VCDH-316	-CHL-CD	VCD-HAT300003 VERIFY GAS DETECTOR AT300003	4th	MT				V					V	V						V	CAH-G3PW	266587	299346		
1,069	VCDH-316	-CHL-CD	VCD-HAT300004 VERIFY GAS DETECTOR AT300004	4th	MT				V					V	V						V	CAH-G3PW	266588	299345		
1,070	VCDH-316	-CHL-CD	VCD-HAT300005 VERIFY GAS DETECTOR AT300005	4th	MT				V					V	V						V	CAH-G3PW	266589	299344		
1,071	VCDH-316	-CHL-CD	VCD-HAT300006 VERIFY GAS DETECTOR AT300006	4th	MT				V					V	V						V	CAH-G3PW	266590	299343		
1,072	VCDH-316	-CHL-LIQ	VERIFY SULFUR ANALYZER	3rd	MT				V		V			V	V						V	CAH-G3PW	108716	130400		
1,073	VCDH-316	-CHL-GAS	VERIFY O2 ANALYZER (% RANGE)	3rd	MT				V		V			V	V						V	CAH-G3PW	41232	42632		
1,074	VCDH-316	-CHL-LIQ	VERIFY SULFUR ANALYZER	3rd	MT				V		V			V	V						V	CAH-G3PW	108716	130400		
1,075	VCDH-316	-CHL-GAS	VERIFY O2 ANALYZER (% RANGE)	3rd	MT				V		V			V	V						V	CAH-G3PW	41231	42631		
1,076	VCDH-316	-CHL-CD	VCD-HAT631401 VERIFY GAS DETECTOR AT631401	4th	MT				V					V	V						V	CAH-G3PW	266381	299322		
1,077	VCDH-316	-CHL-CD	VCD-HAT631402 VERIFY GAS DETECTOR AT631402	4th	MT				V					V	V						V	CAH-G3PW	266382	299323		
1,078	VCDH-316	-CHL-CD	VCD-HAT631403 VERIFY GAS DETECTOR AT631403	4th	MT				V					V	V						V	CAH-G3PW	266383	299324		
1,079	VCDH-316	-CHL-CD	VCD-HAT631501 VERIFY GAS DETECTOR AT631501	4th	MT				V					V	V						V	CAH-G3PW	266384	299325		
1,080	VCDH-316	-CHL-CD	VCD-HAT63105A VERIFY GAS DETECTOR AT63105A	4th	MT				V					V	V						V	CAH-G3PW	266385	299326		
1,081	VCDH-316	-CHL-CD	VCD-HAT63105B VERIFY GAS DETECTOR AT63105B	4th	MT				V					V	V						V	CAH-G3PW	266386	299327		
1,082	VCDH-316	-CHL-MV	VERIFY COMPRESSOR OF CHILLER COL-22	4th	MT				V		L			V	L						V	TRP-CD	85627	104262		
1,083	VCDH-316	-CHILLER	VERIFICATION INSP & ANALYSIS M.C	1st	INS			I	I	I	I	I	I	I	I	I	I	I	I	I	I	I	I	I	I	I
1,084	VCDH-316	-CHILLER	INSPECTION OF VCDH-CHILLER -P01	4th	INT									I							I	RR-ARE	84347	104258		
1,085	VCDH-316	-CHILLER	LUBRICATION OF DCO-CHILLER-P01	1st	MT			L	L	L	L	L	L	L	L	L	L	L	L	L	L	RR-ARE	44408	46008		
1,086	VCDH-316	-CHILLER	VERIFICATION INSP & ANALYSIS M.C	1st	INS			I	I	I	I	I	I	I	I	I	I	I	I	I	I	I	I	I	I	
1,087	VCDH-316	-CHILLER	INSPECTION OF DCO-CHILLER-P02	4th	INT									I							I	RR-ARE	44410	46009		
1,088	VCDH-316	-CHILLER	LUBRICATION OF DCO-CHILLER-P02	1st	MT			L	L	L	L	L	L	L	L	L	L	L	L	L	L	RR-ARE	44410	46010		

[illegible]

Form No.

Effective Date 09.11.2022

Revision 3

[illegible]

Form No.

Effective Date 09.11.2022

Revision 3

Item	E No.	Equipment No.	Reference Item Description	Scale	Units	Act.	Type	TS	TH	PH	PA	AL	CL	PT	PC	Reqs Cont.	Alarm	Plant	Warranty
1.123	VG04-30	-30P004A/B	VG04-F3301022	VERIFY FLOW, TRANS, F3301202	1/Y	/MT				V						REC-REQ	235559	282397	
1.124	VG04-30	-30E002	VG04-F3301301	VERIFY FLOW, TRANS, F3301301	1/Y	/MT				V						REC-REQ	235554	282302	
1.125	VG04-30	-30E002	VG04-F3301302	VERIFY FLOW, TRANS, F3301302	1/Y	/MT				V						REC-REQ	235555	282303	
1.126	VG04-30	-30C001	VG04-F3301401	VERIFY FLOW, TRANS, F3301401	1/Y	/MT				V						REC-REQ	235556	282304	
1.127	VG04-30	-30C001	VG04-F3301402	INSPECTION FLOW TRANS, F3301402	1/Y	/MT								I		REC-REQ	121784	150431	
1.128	VG04-30	-30C001	VG04-F3301402	VERIFY FLOW, TRANS, F3301402	1/Y	/MT				V						REC-REQ	235563	282301	
1.129	VG04-30	-30C008	VG04-F3301602	INSPEC. MASS FLOW TRANS F3301607	1/Y	/MT								I		REC-REQ	235563	282311	
1.130	VG04-30	-30E008	VG04-F3301602	INSPECTION FLOW TRANS F3301602	1/Y	/MT										REC-REQ	235572	282328	
1.131	VG04-30	-30P004A/B	VG04-F3301701	INSPECTION FLOW TRANS, F3301701	1/Y	/MT										REC-REQ	121780	150441	
1.132	VG04-30	-30P004A/B	VG04-F3301701	VERIFY FLOW, TRANS, F3301701	1/Y	/MT										REC-REQ	235567	282305	
1.133	VG04-30	-30C007	VG04-F3301702	INSPECTION FLOW TRANSMITTER F3301702	1/Y	/NS				I						REC-REQ	155599	182015	
1.134	VG04-30	-30C007	VG04-F3301702	VERIFY FLOW, TRANS, F3301702	1/Y	/MT					V					REC-REQ	235545	282393	
1.135	VG04-30	-30E007	VG04-F3301703	INSPECTION FLOW TRANSMITTER F3301703	1/Y	/NS				I						REC-REQ	152891	182015	
1.136	VG04-30	-30C007	VG04-F3301901	INSPECTION MASS FLOW METER F3301901	1/Y	/MT								I		REC-REQ	121773	150434	
1.137	VG04-30	-F100	VG04-F3301901	INSPEC.MASS FLOW TRANS F3301904	1/Y	/MT										REC-REQ	235561	282309	
1.138	VG04-30	-30E010	VG04-F3301902	INSPECTION FLOW TRANSMITTER F3301902	1/Y	/NS				I						REC-REQ	152884	182017	
1.139	VG04-30	-30E010	VG04-F3301903A	INSPECTION FLOW TRANSMITTER F3301903A	1/Y	/NS				I						REC-REQ	152893	182017	
1.140	VG04-30	-30P009A/B	VG04-F3301907	INSPEC.MASS FLOW TRANS F3301901	1/Y	/MT										REC-REQ	235562	282310	
1.141	VG04-30	-30C021	VG04-F3304003	INSPECTION MASS FLOW METER F3304003	1/Y	/MT								I		REC-REQ	121962	150768	
1.142	VG04-DEA3	-10055	VG04-F3311401	VERIFY FLOW TRANS, F3311401	1/Y	/MT					V					REC-REQ	121727	150388	
1.143	VG04-DEA3	-10055	VG04-F3311402	VERIFY FLOW TRANS, F3311402	1/Y	/MT						V				REC-REQ	121728	150389	
1.144	VG04-DEA3	-10566	VG04-F331912	INSPECTION TRANS, F331912	1/Y	/MT								I		REC-REQ	121717	150378	
1.145	VG04-30	-30E016	VG04-F3301012	INSPECTION TRAP, 6 INCH, F3301012	1/Y	/MT										REC-REQ	235563	282318	
1.146	VG04-30	-30E016	VG04-F3301012	INSPECTION FLOW TRANS, F3301012	1/Y	/MT										REC-REQ	235564	282340	
1.147	VG04-30	-30C001	VG04-F3301016	INSPECTION FLOW TRANS, F3301016	1/Y	/MT										REC-REQ	235555	282313	

Form No. _____

Effective Date 09.11.2022

Revision 3

Legend Text : B = Program Back-up C = Calibrate F = Function Test H = Overhaul I = Inspect L = Lubricate M = Strategy Plan P = Preventive Q = Check oil quality
S = Service T = Stand by condition check U = Running condition check V = Verify

[illegible]

Form No. _____

Effective Date 09.11.2022

Revision 3

Legend Text : B = Program Back-up C = Calibrate F = Function Test H = Overhaul I = Inspect L = Lubricate M = Strategy Plan P = Preventive Q = Check oil quality
S = Service T = Stand by condition check U = Running condition check V = Verify

[illegible]

Form No. _____
Effective Date 09.11.2022
Revision 3

Legend Text : B = Program Run-to-Stop, C = Calibrate, F = Function Test, H = Overhaul, I = Inspect, L = Lubricate, M = Strategy Plan, P = Preventive, Q = Check oil quality S = Service, T = Stand by condition code, U = Running condition code, V = Verify																						
Item	Item No.	Equipment No.	Maintenance Item Description	System	Maint. Act.	Type	Jan	Feb	Mar	Apr	May	Jun	Jul	Aug	Sep	Oct	Nov	Dec	Remarks	Next Plan	Mileage	Plan
1.429	VKD-32-320025	VKD-71320051	INSPECTION TEMP. INDICATOR T1320051	1Y	PM														RR-REQD	250878	283312	
1.430	VKD-32-320002	VKD-71320051	INSPECTION TEMP. INDICATOR T1320051	1Y	PM														RR-REQD	250667	282015	
1.431	VKD-32-320002	VKD-71320068	INSPECTION TEMP. ELBOW T1320068	1Y	PM														RR-REQD	21824	150485	
1.432	VKD-32-320002	VKD-71320062	INSPECTION TEMP. GAUGE T1320062	1Y	PM														RR-REQD	21833	150494	
1.433	VKD-32-320002	VKD-71320062	INSPECTION TEMP. GAUGE T1320062	1Y	PM														RR-REQD	21834	150495	
1.434	VKD-32-320002	VKD-71320064	INSPECTION TEMP. GAUGE T1320064	1Y	PM														RR-REQD	21835	150496	
1.435	VKD-32-320002	VKD-71320066	INSPECTION TEMP. GAUGE T1320066	1Y	PM														RR-REQD	21837	150497	
1.436	VKD-32-320001	VKD-75SH600301A	75H-600301B-INSPECTION TEMPERATURE SV.	1Y	INS														RR-REQD	128402	157028	
1.437	VKD-32-320001	VKD-75SH600301B	75H-600301B-INSPECTION TEMPERATURE SV.	1Y	INS														RR-REQD	128403	157027	
1.438	VKD-32-320001	VKD-75SH600301C	75H-600301C-INSPECTION TEMPERATURE SV.	1Y	INS														RR-REQD	128404	157028	
1.439	VKD-32-320002	VKD-75SH601301A	75H-6001301A-INSPECTION TEMPERATURE SV.	1Y	INS														RR-REQD	128408	157032	
1.440	VKD-32-320002	VKD-75SH601301B	75H-6001301B-INSPECTION TEMPERATURE SV.	1Y	INS														RR-REQD	128409	157033	
1.441	VKD-32-320002	VKD-75SH601301C	75H-6001301C-INSPECTION TEMPERATURE SV.	1Y	INS														RR-REQD	128400	157034	
1.442	VKD-32-320002	VKD-75SH602002	75H-600202-INSPECTION TEMP. TRANS. & PRO	1Y	INS														RR-REQD	128424	157058	
1.443	VKD-32-320002	VKD-75SH602004B	75H-600204B-INSPECTION TEMPERATURE SV.	1Y	INS														RR-REQD	128420	157054	
1.444	VKD-32-320002	VKD-75SH602004A	75H-600204A-INSPECTION TEMP. TRANS. & PRO	1Y	INS														RR-REQD	128422	157057	
1.445	VKD-32-320001	VKD-7T3300218A	VERIFY TEMP. TRANS. T13300218A	1Y	PM														RR-REQD	250537	282065	
1.446	VKD-32-320001	VKD-7T3300218B	VERIFY TEMP. TRANS. T13300218B	1Y	PM														RR-REQD	250538	282066	
1.447	VKD-32-320001	VKD-7T3300218C	VERIFY TEMP. TRANS. T13300218C	1Y	PM														RR-REQD	250539	282067	
1.448	VKD-32-320001	VKD-7T3300222A	VERIFY TEMP. TRANS. T13300222A	1Y	PM														RR-REQD	250540	282068	
1.449	VKD-32-320001	VKD-7T3300222B	VERIFY TEMP. TRANS. T13300222B	1Y	PM														RR-REQD	250541	282069	
1.450	VKD-32-320001	VKD-7T3300222C	VERIFY TEMP. TRANS. T13300222C	1Y	PM														RR-REQD	250542	282090	
1.451	VKD-32-320001	VKD-7T33002302	INSPECTION TEMP. TRANS. T133002302	1Y	PM														RR-REQD	121743	154004	
1.452	VKD-32-320001	VKD-7T3300309	INSPECTION TEMP. TRANS. T13300309	1Y	PM														RR-REQD	280383	282874	
1.453	VKD-32-320005	VKD-7T3300575	INSPECTION TEMP. TRANS. T13300575	1Y	PM														RR-REQD	121768	150419	
1.454	VKD-32-320002	VKD-7T33001352	INSPECTION TEMP. TRANS. T133001352	1Y	PM														RR-REQD	250941	282832	
1.455	VKD-32-320020	VKD-7T3301402	VERIFY TEMP. TRANS. T13301402	1Y	PM														RR-REQD	250957	282905	
1.456	VKD-32-320001	VKD-7T33001502	INSPECTION TEMP. TRANS. T13301502	1Y	PM														RR-REQD	121778	150438	
1.457	VKD-32-320021	VKD-7T3304003	INSPECTION TEMP. TRANS. T13304003	1Y	PM														RR-REQD	121759	150420	
1.458	VKD-32-320001	VKD-7T3302023	INSPECTION TEMP. TRANS. T13302023	1Y	PM														RR-REQD	121799	150460	
1.459	VKD-32-320001	VKD-7T3302011	T1320011-INSPECTION TEMP. TRANS. & PRO	1Y	INS														RR-REQD	121863	157097	
1.460	VKD-32-320001	VKD-7T3302011	INSPECTION TEMP. TRANS. T13302011	1Y	PM														RR-REQD	121900	150461	
1.461	VKD-32-320001	VKD-7T3302017	T1320017-INSPECTION TEMP. TRANS. & PRO	1Y	INS														RR-REQD	121964	167098	
1.462	VKD-32-320001	VKD-7T3302016	T1320016-INSPECTION TEMP. TRANS. & PRO	1Y	INS														RR-REQD	121985	157099	

Form No. _____
Effective Date 09.11.2022
Revision 3

Legend Test : B = Program/Breaker Q = Calibrate P=Function Test H = Overhaul I = Inspect L = Lubricate M = Strategy Plan P = Preventive Q = Check off quality S = Service T = Stand by condition code X = Running condition code Y = Verify																										
Item	PL No.	Equipment No.	Maintenance Item Description	Cycle	Minst.	Akt.	Type	Jan	Feb	Mar	Apr	May	Jun	Jul	Aug	Sep	Oct	Nov	Dec	Rtr/Cntd	Wkr/Hr	Cost/Est	Wkr/Hr	Plan	Mileage	
1,361	VCDH-30 -> <R08001	VCDH-TES300226A	INSPECTION T&P, ELBMENT TES300226A	1Y	RM		I													RM-RFD	250907	282844				
1,362	VCDH-30 -> <R08001	VCDH-TES300226B	INSPECTION T&P, ELBMENT TES300226B	1Y	RM		I													RM-RFD	250909	282845				
1,363	VCDH-30 -> <R08001	VCDH-TES300226G	INSPECTION T&P, ELBMENT TES300226G	1Y	RM		I													RM-RFD	250910	282846				
1,364	VCDH-30 -> <R08001	VCDH-TES300227A	INSPECTION T&P, ELBMENT TES300227A	1Y	RM		I													RM-RFD	250912	282847				
1,365	VCDH-30 -> <R08001	VCDH-TES300227B	INSPECTION T&P, ELBMENT TES300227B	1Y	RM		I													RM-RFD	250913	282848				
1,366	VCDH-30 -> <R08001	VCDH-TES300227C	INSPECTION T&P, ELBMENT TES300227C	1Y	RM		I													RM-RFD	250914	282849				
1,367	VCDH-30 -> <R08001	VCDH-TES300228A	INSPECTION T&P, ELBMENT TES300228A	1Y	RM		I													RM-RFD	250917	282950				
1,368	VCDH-30 -> <R08001	VCDH-TES300228B	INSPECTION T&P, ELBMENT TES300228B	1Y	RM		I													RM-RFD	250918	282951				
1,369	VCDH-30 -> <R08001	VCDH-TES300229C	INSPECTION T&P, ELBMENT TES300229C	1Y	RM		I													RM-RFD	250920	282952				
1,370	VCDH-30 -> <R08001	VCDH-TES300229A	INSPECTION T&P, ELBMENT TES300229A	1Y	RM		I													RM-RFD	250921	282953				
1,371	VCDH-30 -> <R08001	VCDH-TES300229B	INSPECTION T&P, ELBMENT TES300229B	1Y	RM		I													RM-RFD	250923	282954				
1,372	VCDH-30 -> <R08001	VCDH-TES300229C	INSPECTION T&P, ELBMENT TES300229C	1Y	RM		I													RM-RFD	250924	282955				
1,373	VCDH-30 -> <R08001	VCDH-TES300221A	INSPECTION T&P, ELBMENT TES300221A	1Y	RM		I													RM-RFD	250928	282956				
1,374	VCDH-30 -> <R08001	VCDH-TES300221B	INSPECTION T&P, ELBMENT TES300221B	1Y	RM		I													RM-RFD	250928	282957				
1,375	VCDH-30 -> <R08001	VCDH-TES300221C	INSPECTION T&P, ELBMENT TES300221C	1Y	RM		I													RM-RFD	250929	282958				
1,376	VCDH-30 -> <R08001	VCDH-TES300221A	INSPECTION T&P, ELBMENT TES300221A	1Y	RM		I													RM-RFD	250931	282959				
1,377	VCDH-30 -> <R08001	VCDH-TES300221B	INSPECTION T&P, ELBMENT TES300221B	1Y	RM		I													RM-RFD	250932	282960				
1,378	VCDH-30 -> <R08001	VCDH-TES300221C	INSPECTION T&P, ELBMENT TES300221C	1Y	RM		I													RM-RFD	250933	282961				
1,379	VCDH-30 -> <R08001	VCDH-TES3002212	INSPECTION T&P ELBMENT TES3002212	1Y	RM		I													RM-RFD	250948	282966				
1,380	VCDH-30 -> <R08001	VCDH-TES300224A	INSPECTION T&P, ELBMENT TES300224A	1Y	RM		I													RM-RFD	250934	282962				
1,381	VCDH-30 -> <R08001	VCDH-TES300224B	INSPECTION T&P, ELBMENT TES300224B	1Y	RM		I													RM-RFD	250935	282963				
1,382	VCDH-30 -> <R08001	VCDH-TES300224C	INSPECTION T&P, ELBMENT TES300224C	1Y	RM		I													RM-RFD	250938	282964				
1,383	VCDH-30 -> <R08001	VCDH-TES3002215A	INSPECTION T&P ELBMENT TES3002215A	1Y	RM		I													RM-RFD	250479	282926				
1,384	VCDH-30 -> <R08001	VCDH-TES300219B	INSPECTION T&P ELBMENT TES300219B	1Y	RM		I													RM-RFD	250481	282927				
1,385	VCDH-30 -> <R08001	VCDH-TES300219C	INSPECTION T&P ELBMENT TES300219C	1Y	RM		I													RM-RFD	250483	282928				
1,386	VCDH-30 -> <R08001	VCDH-TES300221B	INSPECTION T&P ELBMENT TES300221B	1Y	RM		I													RM-RFD	250484	282929				
1,387	VCDH-30 -> <R08001	VCDH-TES3002217	INSPECTION T&P ELBMENT TES3002217	1Y	RM		I													RM-RFD	250950	282998				
1,388	VCDH-30 -> <R08001	VCDH-TES300219A	INSPECTION T&P ELBMENT TES300219A	1Y	RM		I													RM-RFD	250488	282929				
1,389	VCDH-30 -> <R08001	VCDH-TES300219B	INSPECTION T&P ELBMENT TES300219B	1Y	RM		I													RM-RFD	250485	282930				
1,390	VCDH-30 -> <R08001	VCDH-TES300219C	INSPECTION T&P ELBMENT TES300219C	1Y	RM		I													RM-RFD	250487	282931				
1,391	VCDH-30 -> <R08001	VCDH-TES300220	INSPECTION T&P ELBMENT TES300220	1Y	RM		I													RM-RFD	250551	282999				
1,392	VCDH-30 -> <R08001	VCDH-TES300221	INSPECTION T&P ELBMENT TES300221	1Y	RM		I													RM-RFD	250552	282990				
1,393	VCDH-30 -> <R08001	VCDH-TES300223A	INSPECTION T&P ELBMENT TES300223A	1Y	RM		I													RM-RFD	250488	282932				
1,394	VCDH-30 -> <R08001	VCDH-TES300223B	INSPECTION T&P ELBMENT TES300223B	1Y	RM		I													RM-RFD	250489	282933				

Form No. _____
Effective Date 09.11.2022
Revision 3

[illegible]

Form No.
Effective Date 09.11.2022
Revision 3

Legend Test : B = Program/Break Q = Calibrate P = Inspection Test H = Overhaul I = Inspect L = Lubricate M = Strategy Plan P = Preventive Q = Check oil quality S = Service T = Stand by condition Check U = Rerunning condition Check V = Verify																						
Item	PL No.	Equipment No.	Maintenance Item Description	Qty	Unit	Abt. Type	Jan	Feb	Mar	Apr	May	Jun	Jul	Aug	Sep	Oct	Nov	Dec	Work Center	Min.	Plan	Maintenance
1,385	VDH-300-30R001	VDH-TE3000223C	INSPECTION T&P, ELEMENT TE3000223C	1Y	RM	I													R&E-R&E	250489		262834
1,396	VDH-300-30R001	VDH-TE3000225A	INSPECTION T&P, ELEMENT TE3000225A	1Y	RM	I													R&E-R&E	250493		262835
1,397	VDH-300-30R001	VDH-TE3000225B	INSPECTION T&P, ELEMENT TE3000225B	1Y	RM	I													R&E-R&E	250494		262836
1,398	VDH-300-30R001	VDH-TE3000225C	INSPECTION T&P, ELEMENT TE3000225C	1Y	RM	I													R&E-R&E	250498		262837
1,399	VDH-300-30R012	VDH-TE3000703	INSPECTION T&P, ELEMENT TE3000703	1Y	RM	I													R&E-R&E	251787		250416
1,400	VDH-300-30R020	VDH-TE3001101	INSPECTION T&P, ELEMENT TE3001101	1Y	RM	I													R&E-R&E	250484		262838
1,401	VDH-300-30R020	VDH-TE3001129	INSPECTION T&P, TRANS. T3001302	1Y	RM	I													R&E-R&E	250682		262877
1,402	VDH-300-30R008	VDH-TE3001202	INSPECTION T&P, ELEMENT TE3001202	1Y	RM	I													R&E-R&E	251777		250438
1,403	VDH-300-30R010	VDH-TE3001203	INSPECTION T&P, ELEMENT TE3001203	1Y	RM	I													R&E-R&E	251775		250430
1,404	VDH-300-30R002	VDH-TE3001302	INSPECTION T&P, ELEMENT TE3001302	1Y	RM	I													R&E-R&E	251764		250425
1,405	VDH-300-30C001	VDH-TE3001404	INSPECTION T&P, ELEMENT TE3001404	1Y	RM	I													R&E-R&E	250593		263300
1,406	VDH-300-30C001	VDH-TE3001405	INSPECTION T&P, ELEMENT TE3001405	1Y	RM	I													R&E-R&E	250504		262842
1,407	VDH-300-30C001	VDH-TE3001406	INSPECTION T&P, ELEMENT TE3001406	1Y	RM	I													R&E-R&E	250505		262843
1,408	VDH-300-30R008	VDH-TE3001602	INSPECTION T&P, ELEMENT TE3001602	1Y	RM	I													R&E-R&E	251774		250436
1,409	VDH-300-30C005	VDH-TE311401	VERIFY T&P, TRANS. T311402	1Y	RM	V													R&E-R&E	251772		250484
1,410	VDH-300-30C005	VDH-TE311402	VERIFY T&P, TRANS. T311402	1Y	RM	V													R&E-R&E	251724		250485
1,411	VDH-300-30C005	VDH-TE311403	VERIFY T&P, TRANS. T311403	1Y	RM	V													R&E-R&E	251725		250486
1,412	VDH-300-30T001A	VDH-TE3001604	Inspection Temp Transm Item TE3001604	1Y	INT	I													R&E-R&E	69832		133040
1,413	VDH-300-30T001B	VDH-TE3001605	Inspection Temp Transm Item TE3001605	1Y	INT	I													R&E-R&E	69832		133040
1,414	VDH-300-30T001C	VDH-TE3001606	Inspection Temp Transm Item TE3001606	1Y	INT	I													R&E-R&E	69832		133051
1,415	VDH-300-30T002	VDH-TE300201	Inspection Temp Transm Item TE300201	1Y	INT	I													R&E-R&E	69722		133052
1,416	VDH-300-30T005	VDH-TE300401	Inspection Temp Transm Item TE300404	1Y	INT	I													R&E-R&E	69622		133063
1,417	VDH-300-30T006A	VDH-TE300601	Inspection Temp Transm Item TE300601	1Y	INT	I													R&E-R&E	69622		133064
1,418	VDH-300-30T006A	VDH-TE300602	Inspection Temp Transm Item TE300602	1Y	INT	I													R&E-R&E	69622		133065
1,419	VDH-300-30T008C	VDH-TE300603	Inspection Temp Transm Item TE300603	1Y	INT	I													R&E-R&E	69932		133066
1,420	VDH-300-30T001A	VDH-TE300601	Inspection Temp Transm Item TE300601	1Y	INT	I													R&E-R&E	69822		133067
1,421	VDH-300-30T001C	VDH-TE300605	Inspection Temp Transm Item TE300605	1Y	INT	I													R&E-R&E	69822		133068
1,422	VDH-300-30T&P	VDH-TE300608	Inspection Temp Transm Item TE300608	1Y	INT	I													R&E-R&E	69822		133069
1,423	VDH-300-30T008	VDH-TE300701	Inspection Temp Transm Item TE300701	1Y	INT	I													R&E-R&E	69522		133060
1,424	VDH-300-30R001	VDH-TE300226	INSPECTION T&P, INDICATOR TE300226	1Y	RM	I													R&E-R&E	251348		262833
1,425	VDH-300-30R002A	VDH-TE300227	INSPECTION T&P, INDICATOR TE300227	1Y	RM	I													R&E-R&E	251349		262834
1,426	VDH-300-30C0001	VDH-TE3000101	INSPECTION T&P, ELEMENT TE3000101	1Y	RM	V													R&E-R&E	251783		250454
1,427	VDH-300-30C0021	VDH-TE3000404	INSPECTION T&P, ELEMENT TE3000404	1Y	RM	I													R&E-R&E	251818		250470
1,428	VDH-300-30C0001	VDH-TE3000501	INSPECTION T&P, INDICATOR TE3000508	1Y	RM	I													R&E-R&E	250678		262823

PREVENTIVE MAINTENANCE YEARLY SCHEDULE
PLANT : VODH YEAR : 2023

Form No.
Effective Date 09.11.2022
Revision 3

Legend Text : B = Program Back-up C = Calibrate F = Function Test H = Overhaul I = Inspect L = Lubricate M = Strategy Plan P = Preventive Q = Check oil quality
S = Service T = Stand by condition check U = Running condition check V = Verify

Item	S. No.	Equipment No.	Maintenance Item Description	Cycle	Mon.	Act.	Type	Jan	Feb	Mar	Apr	May	Jun	Jul	Aug	Sep	Oct	Nov	Dec	Work Center	Minu. Plan	Maintenance
1.565	VGDH-63 -#303D009A	VGDH-X11495	INSPECTION SOLENOID VALVE X11495	6M	INT								F						F	RRE-RED	32077	33677
1.566	VGDH-63 -#303D009B	VGDH-X11496	INSPECTION SOLENOID VALVE X11496	6M	INT								F						F	RRE-RED	32079	33679
1.567	VGDH-63 -#303D009C	VGDH-X11501	INSPECTION SOLENOID VALVE X11501	6M	INT								F						F	RRE-RED	32082	33682
1.568	VGDH-63 -#303D009B	VGDH-X11502	INSPECTION SOLENOID VALVE X11502	6M	INT								F						F	RRE-RED	32083	33683
1.569	VGDH-63 -#303D010	VGDH-X11503	INSPECTION SOLENOID VALVE X11503	6M	INT								F						F	RRE-RED	32085	33685

PREVENTIVE MAINTENANCE YEARLY SCHEDULE
PLANT : VODH YEAR : 2023

Form No.
Effective Date 09.11.2022
Revision 3

Legend Text : B = Program Back-up C = Calibrate F = Function Test H = Overhaul I = Inspect L = Lubricate M = Strategy Plan P = Preventive Q = Check oil quality
S = Service T = Stand by condition check U = Running condition check V = Verify

Item	S. No.	Equipment No.	Maintenance Item Description	Cycle	Mon.	Act.	Type	Jan	Feb	Mar	Apr	May	Jun	Jul	Aug	Sep	Oct	Nov	Dec	Work Center	Minu. Plan	Maintenance
1.497	VGDH-63 -#303T001A	VGDH-T1630191	INSPECT FIELD INSTRUMENT T1630191	1Y	INT								I							RRE-RED	32318	33818
1.498	VGDH-63 -#303T001B	VGDH-T1630192	INSPECT FIELD INSTRUMENT T1630192	1Y	INT								I							RRE-RED	32318	33818
1.499	VGDH-63 -#303T001C	VGDH-T1630193	INSPECT FIELD INSTRUMENT T1630193	1Y	INT								I							RRE-RED	32320	33820
1.500	VGDH-63 -#303T002	VGDH-T1630202	INSPECT FIELD INSTRUMENT T1630202	1Y	INT								I							RRE-RED	32322	33822
1.501	VGDH-63 -#303T003	VGDH-T1630303	INSPECT FIELD INSTRUMENT T1630303	1Y	INT											I				RRE-RED	32236	33836
1.502	VGDH-63 -#303T004	VGDH-T1630304	INSPECT FIELD INSTRUMENT T1630304	1Y	INT											I				RRE-RED	32237	33837
1.503	VGDH-32 -#30F001A/B	VGDH-U3202023	U3202023-INSPECTION SHUT-OFF VALVE	1Y	INS											I				RRE-RED	128556	157890
1.504	VGDH-32 -#30F001A	VGDH-U3202021	U3202021-INSPECTION SHUT-OFF VALVE	1Y	INS			I												RRE-RED	281811	284325
1.505	VGDH-32 -#JB	VGDH-U3203033	INSPECT CONTROL VALVE U3203033	1Y	INT															RRE-RED	121368	150794
1.506	VGDH-32 -#JB	VGDH-U3203033	RM LOCAL CONTROL PANEL OF U3203033	1M	INT			I	I	I	I	I	I	I	I	I	I	I	I	RRE-RED	121974	150880
1.507	VGDH-32 -#32E17	VGDH-U3200402	U3200402-INSPECTION SHUT-OFF VALVE	1Y	INS															RRE-RED	128651	157885
1.508	VGDH-32 -#32E17	VGDH-U3200402	U3200402-INSPECTION SHUT-OFF VALVE	1Y	INS															RRE-RED	281908	284322
1.509	VGDH-32 -#JB	VGDH-U3200501	INSPECT CONTROL VALVE U3200501	1Y	INT															RRE-RED	121969	150795
1.510	VGDH-32 -#JB	VGDH-U3200501	RM LOCAL CONTROL PANEL OF U3200501	1M	INT			I	I	I	I	I	I	I	I	I	I	I	I	RRE-RED	121975	150801
1.511	VGDH-32 -#30C003	VGDH-U3200502	U3200502-INSPECTION SHUT-OFF VALVE	1Y	INS															RRE-RED	128637	157871
1.512	VGDH-32 -#JB	VGDH-U3200503	INSPECT CONTROL VALVE U3200503	1Y	INT															RRE-RED	121970	150796
1.513	VGDH-32 -#JB	VGDH-U3200503	RM LOCAL CONTROL PANEL OF U3200503	1M	INT			I	I	I	I	I	I	I	I	I	I	I	I	RRE-RED	121976	150802
1.514	VGDH-32 -#30F001A/B	VGDH-U3200708	U3200708-INSPECTION SHUT-OFF VALVE	1Y	INS															RRE-RED	128662	157898
1.515	VGDH-32 -#30F001A	VGDH-U3200714	U3200714-INSPECTION SHUT-OFF VALVE	1Y	INS			I												RRE-RED	281886	284318
1.516	VGDH-32 -#32E21	VGDH-U3200901	U3200901-INSPECTION SHUT-OFF VALVE	1Y	INS															RRE-RED	128652	157886
1.517	VGDH-32 -#32D17	VGDH-U3200903	U3200903-INSPECTION SHUT-OFF VALVE	1Y	INS															RRE-RED	128643	157877
1.518	VGDH-32 -#JB	VGDH-U3200905	INSPECT CONTROL VALVE U3200905	1Y	INT															RRE-RED	121971	150797
1.519	VGDH-32 -#JB	VGDH-U3200905	RM LOCAL CONTROL PANEL OF U3200905	1M	INT			I	I	I	I	I	I	I	I	I	I	I	I	RRE-RED	121977	150803
1.520	VGDH-32 -#JB	VGDH-U3201003	INSPECT CONTROL VALVE U3201003	1Y	INT															RRE-RED	121972	150798
1.521	VGDH-32 -#JB	VGDH-U3201003	RM LOCAL CONTROL PANEL OF U3201003	1M	INT			I	I	I	I	I	I	I	I	I	I	I	I	RRE-RED	121976	150804
1.522	VGDH-32 -#JB	VGDH-U3201007	INSPECT CONTROL VALVE U3201007	1Y	INT															RRE-RED	121973	150799
1.523	VGDH-32 -#JB	VGDH-U3201007	RM LOCAL CONTROL PANEL OF U3201007	1M	INT			I	I	I	I	I	I	I	I	I	I	I	I	RRE-RED	121979	150805
1.524	VGDH-32 -#32E10B	VGDH-U3201205	U3201205-INSPECTION SHUT-OFF VALVE	1Y	INS															RRE-RED	128650	157884
1.525	VGDH-32 -#32C001	VGDH-U3201204	U3201204-INSPECTION SHUT-OFF VALVE	1Y	INS															RRE-RED	128628	157862
1.526	VGDH-32 -#32C009	VGDH-U3201302	U3201302-INSPECTION SHUT-OFF VALVE	1Y	INS															RRE-RED	128641	157875
1.527	VGDH-32 -#32E09A	VGDH-U3201401	U3201401-INSPECTION SHUT-OFF VALVE	1Y	INS															RRE-RED	128648	157883
1.528	VGDH-32 -#32E003	VGDH-U3201701	U3201701-INSPECTION SHUT-OFF VALVE	1Y	INS															RRE-RED	128648	157882
1.529	VGDH-32 -#32E002	VGDH-U3201801	U3201801-INSPECTION SHUT-OFF VALVE	1Y	INS															RRE-RED	128626	157869
1.530	VGDH-32 -#32E002	VGDH-U3201802	U3201802-INSPECTION SHUT-OFF VALVE	1Y	INS															RRE-RED	128628	157860

PREVENTIVE MAINTENANCE YEARLY SCHEDULE
PLANT : VODH YEAR : 2023

Form No.
Effective Date 09.11.2022
Revision 3

Legend Text : B = Program Back-up C = Calibrate F = Function Test H = Overhaul I = Inspect L = Lubricate M = Strategy Plan P = Preventive Q = Check oil quality
S = Service T = Stand by condition check U = Running condition check V = Verify

Item	S. No.	Equipment No.	Maintenance Item Description	Cycle	Mon.	Act.	Type	Jan	Feb	Mar	Apr	May	Jun	Jul	Aug	Sep	Oct	Nov	Dec	Work Center	Minu. Plan	Maintenance	
1.531	VGDH-32 -#32E002	VGDH-U3201803	U3201803-INSPECTION SHUT-OFF VALVE	1Y	INS															RRE-RED	128627	157861	
1.532	VGDH-30 -#30E113A	VGDH-V90000801A	FUNCTION TEST VIBRATION SW. V90000801A	1Y	INT															F	RRE-RED	121710	150371
1.533	VGDH-30 -#30E113B	VGDH-V90000801B	FUNCTION TEST VIBRATION SW. V90000801B	1Y	INT															F	RRE-RED	121711	150372
1.534	VGDH-30 -#30E114A/B	VGDH-V90001101A	FUNCTION TEST VIBRATION SW. V90001101A	1Y	INT															F	RRE-RED	31756	33366
1.535	VGDH-30 -#30E114B	VGDH-V90001101B	FUNCTION TEST VIBRATION SW. V90001101B	1Y	INT															F	RRE-RED	31767	33367
1.536	VGDH-30 -#30E115A	VGDH-V90001501A	FUNCTION TEST VIBRATION SW. V90001501A	1Y	INT															F	RRE-RED	31712	330573
1.537	VGDH-30 -#30E115B	VGDH-V90001501B	FUNCTION TEST VIBRATION SW. V90001501B	1Y	INT															F	RRE-RED	31769	33369
1.538	VGDH-30 -#30E117A	VGDH-V90001901A	FUNCTION TEST VIBRATION SW. V90001901A	1Y	INT															F	RRE-RED	31770	33370
1.539	VGDH-30 -#30E119B	VGDH-V90001901B	FUNCTION TEST VIBRATION SW. V90001901B	1Y	INT															F	RRE-RED	31771	33371
1.540	VGDH-32 -#32E118	VGDH-V900020801	FUNCTION TEST VIBRATION SW. V900020801	1Y	INT															F	RRE-RED	121713	150374
1.541	VGDH-32 -#32E118	VGDH-V90020802	FUNCTION TEST VIBRATION SW. V90020802	1Y	INT															F	RRE-RED	121714	150375
1.542	VGDH-32 -#32E121	VGDH-V90020901	FUNCTION TEST VIBRATION SW. V90020901	1Y	INT															F	RRE-RED	121715	150376
1.543	VGDH-32 -#32E121	VGDH-V90020902	FUNCTION TEST VIBRATION SW. V90020902	1Y	INT															F	RRE-RED	121716	150377
1.544	VGDH-30 -#30E001	VGDH-V90000403	V90000403-INSPECTION SHUT-OFF VALVE	1Y	INS			I												RRE-RED	128491	157825	
1.545	VGDH-30 -#30E002	VGDH-V90001301	V90001301-INSPECTION SHUT-OFF VALVE	1Y	INS				I											RRE-RED	128501	157835	
1.546	VGDH-32 -#32E001	VGDH-V90001001	V90001001-INSPECTION SHUT-OFF VALVE	1Y	INS					I										RRE-RED	128521	157855	
1.547	VGDH-71 -#307T001C	VGDH-X07151	X07151-INSPECTION SHUT-OFF VALVE	1Y	INS															RRE-RED	156658	187328	
1.548	VGDH-71 -#307T001B	VGDH-X07153	X07153-INSPECTION SHUT-OFF VALVE	1Y	INS															RRE-RED	156661	187331	
1.549	VGDH-63 -#303D0071A	VGDH-X11161	INSPECTION SOLENOID VALVE X11161	6M	INT															F	RRE-RED	32047	33647
1.550	VGDH-63 -#303D0071B	VGDH-X11162	INSPECTION SOLENOID VALVE X11162	6M	INT															F	RRE-RED	32045	33645
1.551	VGDH-63 -#303D00702	VGDH-X11163	INSPECTION SOLENOID VALVE X11163	6M	INT															F	RRE-RED	32049	33649
1.552	VGDH-63 -#303D0030A	VGDH-X11261	INSPECTION SOLENOID VALVE X11261	6M	INT															F	RRE-RED	32054	33654
1.553	VGDH-63 -#303D0030B	VGDH-X11262	INSPECTION SOLENOID VALVE X11262	6M	INT															F	RRE-RED	32051	33651
1.554	VGDH-63 -#303D0030C	VGDH-X11263	INSPECTION SOLENOID VALVE X11263	6M	INT															F	RRE-RED	32056	33656
1.555	VGDH-63 -#303D0040A	VGDH-X11264	INSPECTION SOLENOID VALVE X11264	6M	INT															F	RRE-RED	32052	33652
1.556	VGDH-63 -#303D0040B	VGDH-X11265	INSPECTION SOLENOID VALVE X11265	6M	INT															F	RRE-RED	32060	33660
1.557	VGDH-63 -#303D0040C	VGDH-X11266	INSPECTION SOLENOID VALVE X11266	6M	INT															F	RRE-RED	32062	33662
1.558	VGDH-63 -#303D0050A	VGDH-X11267	INSPECTION SOLENOID VALVE X11267	6M	INT															F	RRE-RED	32067	33667
1.559	VGDH-63 -#303D0050B	VGDH-X11268	INSPECTION SOLENOID VALVE X11268	6M	INT															F	RRE-RED	32064	33664
1.560	VGDH-63 -#303D0050C	VGDH-X11269	INSPECTION SOLENOID VALVE X11269	6M	INT															F	RRE-RED	32067	33667
1.561	VGDH-63 -#303D0060A	VGDH-X11401	INSPECTION SOLENOID VALVE X11401	6M	INT															F	RRE-RED	32071	33671
1.562	VGDH-63 -#303D0060B	VGDH-X11402	INSPECTION SOLENOID VALVE X11402	6M	INT															F	RRE-RED	32072	33672
1.563	VGDH-63 -#303D0070A	VGDH-X11403	INSPECTION SOLENOID VALVE X11403	6M	INT															F	RRE-RED	32074	33674
1.564	VGDH-63 -#303D0070B	VGDH-X11404	INSPECTION SOLENOID VALVE X11404	6M	INT															F	RRE-RED	32069	33669

เอกสารแนบที่ 8

รายงานผลการตรวจวัดการรั่วซึมของสารอินทรีย์ระเหยจากอุปกรณ์ (รว.3/1)

1. รายละเอียดเกี่ยวกับโรงงาน							
ชื่อโรงงาน บริษัท ไออาร์พีซี จำกัด (มหาชน)							
ทะเบียนโรงงานเลขที่ <div></div>							
สถานที่ตั้งโรงงาน เลขที่ 299 หมู่ที่ 5 ซอย - ถนน สุขุมวิท จังหวัด ระยอง เขต/อำเภอ เมืองระยอง แขวง/ตำบล รหัสไปรษณีย์ 21000							
2. ข้อมูลปริมาณสารอินทรีย์ระเหย							
ปริมาณสารอินทรีย์ระเหยรวมที่มีหรือใช้ในกระบวนการผลิต 646906.00 ตันต่อปี							
ประเภทอุปกรณ์	สถานะสารอินทรีย์ระเหย	จำนวนอุปกรณ์ทั้งหมดของโรงงาน		จำนวนอุปกรณ์ที่ต้องตรวจวัดการรั่วซึมในรอบการรายงานครั้งนี้			ปริมาณสารอินทรีย์ระเหยรวมในรูปมีเทนที่รั่วซึมจากอุปกรณ์ที่ตรวจวัดการรั่วซึมทั้งหมดในรอบการรายงานครั้งนี้ (กิโลกรัม)
		จำนวนอุปกรณ์ที่ต้องตรวจวัดการรั่วซึม (จุด)	จำนวนอุปกรณ์ที่ได้รับการยกเว้นไม่ต้องตรวจวัดการรั่วซึม (จุด)	จำนวนอุปกรณ์ที่ตรวจวัดการรั่วซึมทั้งหมด (จุด)	จำนวนอุปกรณ์ที่มีผลการตรวจวัดเกินจากเกณฑ์การควบคุมการรั่วซึม (จุด)	จำนวนอุปกรณ์ที่ได้รับการซ่อมแซมให้อยู่ในเกณฑ์การควบคุมการรั่วซึม (จุด)	
วาล์ว (Valves)	แก๊ส	1022	380	638	0	0	20.59
วาล์ว (Valves)	ของเหลว	2217	288	1162	0	0	37.78
ปั๊ม (Pumps)	ของเหลว	0	0	0	0	0	0.00
อุปกรณ์ลดความดัน (Pressure Relief Devices)	แก๊ส	0	0	0	0	0	0.00
อุปกรณ์ลดความดัน (Pressure Relief Devices)	ของเหลว	0	0	0	0	0	0.00
เครื่องอัดอากาศ (Compressors)	ทั้งหมด	0	0	0	0	0	0.00
ข้อต่อหรือหน้าแปลน (Connectors or Flanges)	ทั้งหมด	5364	1247	3501	0	0	9.37
ท่อส่งปลายเปิด (Open-Ended Lines)	ทั้งหมด	630	306	630	0	0	5.46
จุดเก็บตัวอย่างสารเคมี (Sampling Connections)	ทั้งหมด	0	0	0	0	0	0.00
อุปกรณ์ที่ใช้กวนหรือผสมของเหลว (Agitators or Mixers)	ทั้งหมด	0	0	0	0	0	0.00
3. ปัญหา อุปสรรค และวิธีการแก้ไข							
ขอรับรองว่าข้อมูลข้างต้นเป็นจริงทุกประการ							
.....(ลงชื่อ)							
(นาย วิชัย จงจิตต์สุข)							
ผู้จัดการสิ่งแวดล้อมหรือผู้ได้รับอนุญาตประกอบกิจการโรงงาน							

เอกสารแนบที่ 9

สำเนาหนังสืออนุญาตให้โรงงานมีบุคลากรด้านสิ่งแวดล้อมประจำโรงงาน



มทส.รับวันที่ 87/7/65 NO. 150/65 1/2

ที่ อก ๐๓๑๓/ ๕๖๑๕

กรมโรงงานอุตสาหกรรม
ถนนพระรามที่ ๖ แขวงทุ่งพญาไท
เขตราชเทวี กรุงเทพฯ ๑๐๔๐๐

๒๑ กรกฎาคม ๒๕๖๕

เรื่อง หนังสือรับแจ้งการมีบุคลากรด้านสิ่งแวดล้อมประจำโรงงาน

เรียน ผู้รับใบอนุญาตประกอบกิจการโรงงาน บริษัท ไออาร์พีซี จำกัด (มหาชน)

อ้างถึง คำขอเลขที่ ๐๘๕๒ ลงรับวันที่ ๑๘ กรกฎาคม ๒๕๖๕

ตามคำขอที่อ้างถึง ท่านแจ้งการยกเลิกบุคลากรด้านสิ่งแวดล้อมประจำโรงงาน ของ บริษัท ไออาร์พีซี จำกัด (มหาชน) ทะเบียนโรงงานเลขที่ [REDACTED] ประกอบกิจการแปรสภาพคอมไบน์แก๊สออยล์ให้เป็นผลิตภัณฑ์จากปิโตรเลียมหรือปิโตรเคมี เช่น CRACKED NAPHTHA PROPYLENE ตั้งอยู่ ณ เลขที่ ๒๙๙ หมู่ที่ ๕ ตำบลเชิงเนิน อำเภอเมืองระยอง จังหวัดระยอง โทรศัพท์ ๐ ๓๘๖๑ ๑๓๓๓

กรมโรงงานอุตสาหกรรมพิจารณาแล้ว รับแจ้งการยกเลิกบุคลากรด้านสิ่งแวดล้อมประจำโรงงาน และให้ท่านยื่นคำขอแจ้งการมีบุคลากรด้านสิ่งแวดล้อมประจำโรงงานครั้งต่อไป ภายในวันที่ ๑๖ เมษายน ๒๕๖๗ โดยมีบุคลากรด้านสิ่งแวดล้อมประจำโรงงาน ดังนี้

ผู้จัดการสิ่งแวดล้อม			นายวิชัย จงจิตต์สุข		
ลำดับ	ผู้ควบคุมระบบบำบัด	เลขทะเบียน	มลพิษน้ำ	มลพิษอากาศ	มลพิษกากอุตสาหกรรม
๑			✓		
๒				✓	
๓					✓
๔					✓
๕				✓	
๖				✓	

ลำดับ	ผู้ปฏิบัติงานประจำระบบบำบัด	มลพิษน้ำ	มลพิษอากาศ	มลพิษกากอุตสาหกรรม
๑		✓		
๒		✓		
๓		✓	✓	
๔		✓		
๕			✓	
๖			✓	
๗	นายสมชาย หงษ์อินทพร			✓

REDV ถึงคุณวิชัย ลงนามอาวน

๑ ปิ่น นามวิชัย มทส.

① เริ่ม ณ. ๑๐๐๓๑๓, ณ. 31/๓๖
หน้าคน. ๑๐๐๓๑๓/๓๖
cc: ๕๖๑๕, ๕๖๑๕๐๕

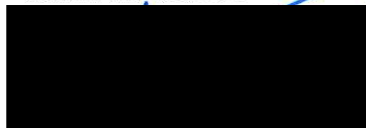
ลำดับ ๘... [REDACTED]

ลำดับ	ผู้ปฏิบัติงานประจำระบบบำบัด	มลพิษน้ำ	มลพิษอากาศ	มลพิษกากอุตสาหกรรม
๘				✓
๙				✓
๑๐		✓		✓
๑๑		✓		
๑๒		✓		
๑๓			✓	
๑๔		✓	✓	
๑๕			✓	
๑๖			✓	
๑๗				✓
๑๘			✓	✓
๑๙				✓
๒๐				✓
๒๑		✓		
๒๒		✓	✓	
๒๓		✓		
๒๔			✓	✓
๒๕			✓	
๒๖				✓
๒๗			✓	✓
๒๘				✓
๒๙			✓	
๓๐			✓	

หมายเหตุ ๑. การแจ้งการมี/ยกเลิก/เพิ่มเติม/เปลี่ยนแปลง บุคลากรด้านสิ่งแวดล้อมประจำโรงงาน ต้องส่งหนังสือฉบับนี้ด้วย
๒. ยกเลิกหนังสือรับแจ้งการมีบุคลากรด้านสิ่งแวดล้อมประจำโรงงาน ที่ ออก ๐๓๑๓/๓๐๘๖ ลงวันที่ ๙ มีนาคม ๒๕๖๕

จึงเรียนมาเพื่อโปรดทราบ

ขอแสดงความนับถือ



ผู้อำนวยการกองส่งเสริมเทคโนโลยีสิ่งแวดล้อมโรงงาน
ปฏิบัติราชการแทนอธิบดีกรมโรงงานอุตสาหกรรม

กองส่งเสริมเทคโนโลยีสิ่งแวดล้อมโรงงาน

กลุ่มกำกับบุคลากรด้านสิ่งแวดล้อมประจำโรงงาน

โทรศัพท์ ๐ ๒๔๓๐ ๖๓๑๕ ต่อ ๒๔๐๕

โทรสาร ๐ ๒๔๓๐ ๖๓๑๕ ต่อ ๒๔๙๙

ไปรษณีย์อิเล็กทรอนิกส์ saraban@diw.mail.go.th

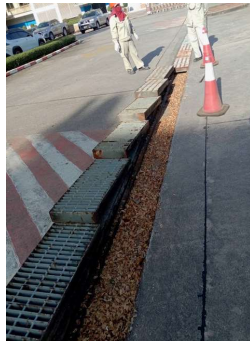
③. เรือน ๓๓๓.๒๕๖๓๓๓

แจ้งทราบ เสร็จแล้ว



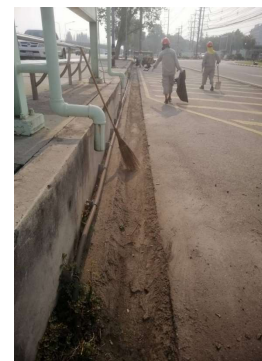
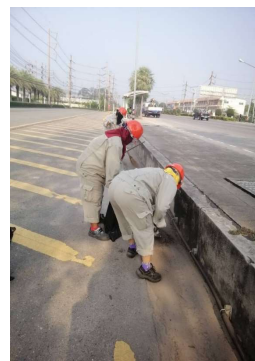
เอกสารแนบที่ 10
แผนงานชุดล่อท่อระบายน้ำ

รายงานน้ำ อาคาร10ปี เดือนมกราคม 66



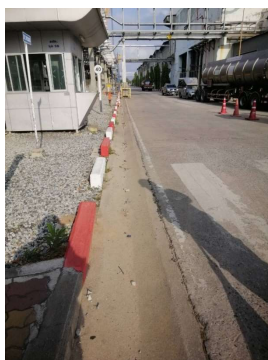
1

รายงานน้ำ จุด1หน้าโรงงานสุขุมวิทซ้าย-ขวา เดือน ก.พ 66



2

รางระบายน้ำ WH-42 จุด 2-จุด 7 เดือน มี.ค 66



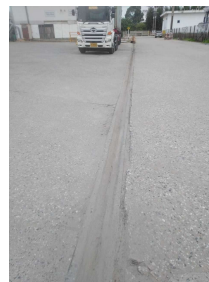
3

รางระบายน้ำ 3 แยก DCC-BTX เดือน เม.ย 66



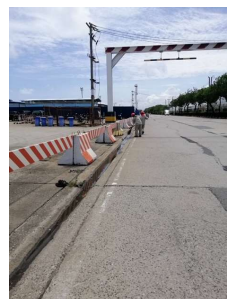
4

ร่องระบายน้ำจุด T1 ด้านหน้าอาคารจ่ายตัว เดือน พ.ค.66



5

ร่องระบายน้ำจุด PO2-WF7 เดือน มิ.ย. 66



6



ใบเสร็จรับเงิน

เทศบาลตำบลเชิงเนิน

เลขที่ RCPT-02165/66
วันที่ 12 พฤษภาคม 2566

ได้รับเงินจาก บริษัท ไออาร์พีซี จำกัด (มหาชน)

ลำดับ	รายการ	รหัสบัญชี	จำนวนเงิน (บาท)	หมายเหตุ
	ที่อยู่ 299 ม.5 ซ.ซอยสุขุมวิท ถ.สุขุมวิท ต.เชิงเนิน อ.เมืองระยอง จ.ระยอง			
1	ค่าธรรมเนียมเก็บและขนมูลฝอย	4401030106.001	56,000.00	ประจำเดือน เมษายน 2566
รวมเงิน			56,000.00	

ตัวอักษร (ห้ามนำออกนอกพื้นที่)

ไม่เป็นการถูกต้องแล้ว



คนงานทั่วไป

เงินโอนเข้าบัญชีธนาคารกรุงไทย จำกัด (มหาชน) สาขาระยอง เลขที่บัญชี 218-1-75087-4 : 56,000.00 บาท
วันที่ 8 พฤษภาคม 2566
รวม : 56,000.00 บาท



ใบเสร็จรับเงิน

เทศบาลตำบลเชิงเนิน

เลขที่ RCPT-C2166/66
วันที่ 12 พฤษภาคม 2566

ได้รับเงินจาก บริษัท ไออาร์พีซี จำกัด (มหาชน)

ลำดับ	รายการ	รหัสบัญชี	จำนวนเงิน (บาท)	หมายเหตุ
1	รายได้เบ็ดเตล็ดอื่น ๆ - รายได้เบ็ดเตล็ดอื่น ๆ	4401100199.001	44,000.00	ค่าใช้จ่ายในการเก็บขน ขยะมูลฝอย ประจำเดือน เมษายน 2566
รวมเงิน			44,000.00	

ตัวอักษร (ห้ามนำออกนอกพื้นที่)

ไม่เป็นการถูกต้องแล้ว



คนงานทั่วไป

เงินโอนเข้าบัญชีธนาคารกรุงไทย จำกัด (มหาชน) สาขาระยอง เลขที่บัญชี 218-1-75087-4 : 44,000.00 บาท
วันที่ 8 พฤษภาคม 2566
รวม : 44,000.00 บาท



ใบเสร็จรับเงิน

เลขที่ RCPT-02368/66

วันที่ 13 มิถุนายน 2566

เทศบาลตำบลเชิงเนิน

ได้รับเงินจาก บริษัท ไออาร์พีซี จำกัด (มหาชน)

ลำดับ	รายการ	รหัสบัญชี	จำนวนเงิน (บาท)	หมายเหตุ
	ที่อยู่ 299 ม.5 ซ.ซอยสุขุมวิท อ.สุขุมวิท ต.เชิงเนิน อ.เมืองระยอง จ.ระยอง			
1	ค่าธรรมเนียมน้ำประปาและขยะมูลฝอย	4401030106.001	56,000.00	ประจำเดือน พฤษภาคม 2566
รวมเงิน			56,000.00	

ตัวอักษร (ห้าหมื่นหกพันบาทถ้วน)

ไว้เป็นการถูกต้องแล้ว



คนงานทั่วไป

เงินโอนเข้าบัญชีธนาคารกรุงไทย จำกัด (มหาชน) สาขาระยอง เลขที่บัญชี 218-1-75087-4 : 56,000.00 บาท
วันที่ 9 มิถุนายน 2566
รวม : 56,000.00 บาท



ใบเสร็จรับเงิน

เลขที่ RCPT-02369/66

วันที่ 13 มิถุนายน 2566

เทศบาลตำบลเชิงเนิน

ได้รับเงินจาก บริษัท ไออาร์พีซี จำกัด (มหาชน)

ลำดับ	รายการ	รหัสบัญชี	จำนวนเงิน (บาท)	หมายเหตุ
1	รายได้เบ็ดเตล็ดอื่น ๆ - รายได้เบ็ดเตล็ดอื่น ๆ	4401100199.001	44,000.00	ค่าใช้จ่ายในการเก็บ ขยะมูลฝอย ประจำเดือน พฤษภาคม 2566
รวมเงิน			44,000.00	

ตัวอักษร (สี่หมื่นสี่พันบาทถ้วน)

ไว้เป็นการถูกต้องแล้ว



คนงานทั่วไป

เงินโอนเข้าบัญชีธนาคารกรุงไทย จำกัด (มหาชน) สาขาระยอง เลขที่บัญชี 218-1-75087-4 : 44,000.00 บาท
วันที่ 9 มิถุนายน 2566
รวม : 44,000.00 บาท